



First Annual

BLT BUILT DESIGN AWARDS

2021

The BLT Built Design Awards honor the expertise of all professionals involved in the realization of outstanding projects, including architecture firms, interior design experts, construction products, and project management.

BLT Built Design Awards encompasses all forms of buildings, projects, and infrastructure that cope with the challenges of today's urbanization; projects which inspire the next generation of professionals. This annual program aims to celebrate projects, people, and their passion for the industry and, through our rigorous judging process, we recognize those that have gone above and beyond normal, expected levels of achievement. We want to share your excellence with the world.



jury



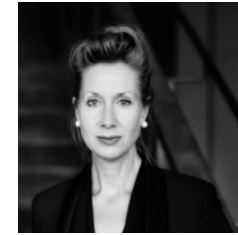
Valeria Senkina
Dseesion Interiors
Founder, General Manager
and Chief Architect



Ole Gustavsen
Oslo School of
Architecture
and Design (AHO)
Rector



Dan Grimshaw
BEAM Development Ltd
Founder & Principal



Liss C. Werner
Technische Universität Berlin
Professor of Bio-inspired
Architecture & Sensoric
Tactile Architecture
Founding Director



Lingzhi Xu
International Alliance of
Creative Industries
Professor, Researcher and
Installation Artist



Geoff Wilkinson
Wilkinson Construction
Consultants
Managing Director



Walter Mariotti
Domus Magazine
Editorial Director



Kamille Glenn
dsgnrswrkshp
Founder



Gayathri Unnikrishnan
International WELL Building
Institute
Vice President - Standard
Development and Concept
Lead for Light



Kouros Salehi
LWK + PARTNERS
Design Director



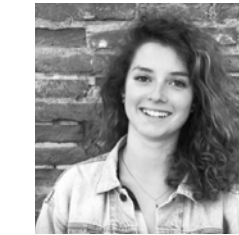
Leni Popovici
KAP Studios
Co-Founder



Kavitha Iyer
Intercontinental Hotel Group
Head of Design, Americas



Claude Paquin
Magazine FORMES
Publisher



Marie Crabié
Tema.archi
Journalist



Murat Soygenis, FAIA
S+ ARCHITECTURE
Founding Partner



Annie Block
Interior Design Magazine
Executive Editor



Waad El Hadidy
SH Hotels & Resorts
Design Director
The Medusan
President



Thomas Hoepf, FAIA, NCARB
EXP Architects + Engineers
Senior Vice President / Design
Director



Helle Juul
Juul | Frost Architects
Architect and Founding
Partner



Sam Tehranchi
Design Core Architects &
Urban Designers
CEO and Principal
architect



Sara Jazayeri
Studio 360 Architecture &
Interior Design
Principal



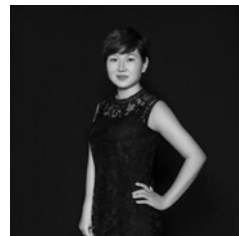
Lynn Wang
Asia Pacific Design Center
(APDC)
Head of Overseas Affairs
Dept



Yolande Wong
Beijing Zhijian Cultural
Communication Co., Ltd.
Founder



MIAOYING JIANG 蒋缪奕
Research Institute in SUZHOU
Deputy Dean of Design
Gold Mantis Shanghai
Executive General Manager



Rita Chow
Sunshine PR & Global
Design Awards Lab
Founder and Chief
Director



Heath Gledhill
Aurecon
Architecture & Design
Integration Practice
Leader



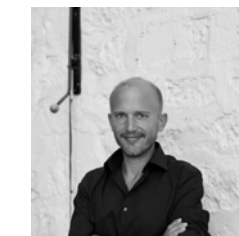
Patricia Medina
Van Belle & Medina
Architect Director



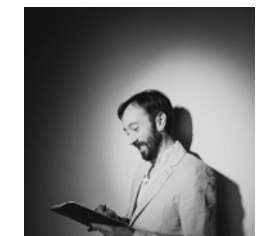
Rodrigo Langarica Avila
School of Architecture,
Universidad Anahuac
Querétaro
Dean



ZHOU Wen Jun 周文君
Zhou Wen Jun * Design // 524
STUDIO * // NGISED.DESIGN *
Founder, Design Director,
Architect



Clément Blanchet
Clément Blanchet
Architecture
Principal



Angelo Bucci
Università Europea del
Design – Pescara
Head of Interior Design
Department



Penny Craswell
The Design Writer
Author



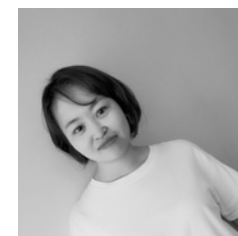
Kunle Barker
MELT Property
Chief Operating Officer



Dr. Anna Grichting Solder
Bordermeetings Switzerland
University of Vermont, USA
Senior Research Fellow



Phill Mashabane
Mashabane Rose and
Associates
Principal and Owner



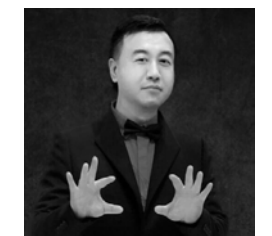
Yuk Cho
DesignKeeper
Chief Marketing Officer



Henry Mickleburgh
BD Solutions
Management Consultant



Giulio Marinescu
Green Building Media,
Toronto
CEO



Jason Wang
Asia Pacific Design Center
(APDC)
Secretary-General

partners

APDC 亞太設計中心
Asia Pacific Design Center



DESIGN BOX
Awards.com

设计纪元™
DESIGN EPOCH

.STUDIO



de
zeen

THE LIGHT
REVIEW

GREENBUILDING
+ARCHITECTURE

stir
www.stirworld.com

D5 DESIGN
MAGAZINE

winners interviews

Saartje van der Made

Architectural Design of the Year



Could you tell us a little about your professional journey?
Where are you from?

My name is Saartje van der Made. After graduating cum laude in architecture at TU Delft, I immediately started working here at Benthem Crowel architects. I became a partner/co-owner 5 years ago and I run the agency together with three other partners.

What was the project design brief for the “Dutch Charity Lotteries Office Building”? What was most important for you when planning this project?

The Charity Lotteries has grown to 600 employees in about 25 years. They were located at the Vondelpark in Amsterdam, spread over several stately mansions. They were ready to work in 1 new building, which fits today’s requirements, but very attached to their beautiful natural environment.

To help them make the big step to the business district Zuidas, we designed a building that has the same quality as real nature has: large, artificial foliage covers the entire plot and connects the existing renovated building with the new small volumes built on top. It lets in and filters daylight so that an ever-changing shadow pattern adorns the building.

By also involving the employees in the design of the interior, the building has been given a dynamic atrium and the office building feels like a home.

How would you describe your role in this project?

As a project architect, it was my mission to design a custom building for this organization and to guide them in the process. By occasionally taking a step back in the design process and giving room for their personal ideas, the building has become a result of both our visions.

What were the biggest challenges you and your team faced?

The promise to guide and involve all board members and employees in the design process and yet to design the most sustainable renovated building in the Netherlands.

Can you please share with us what winning the “Architectural Design of the Year” prize means to you?

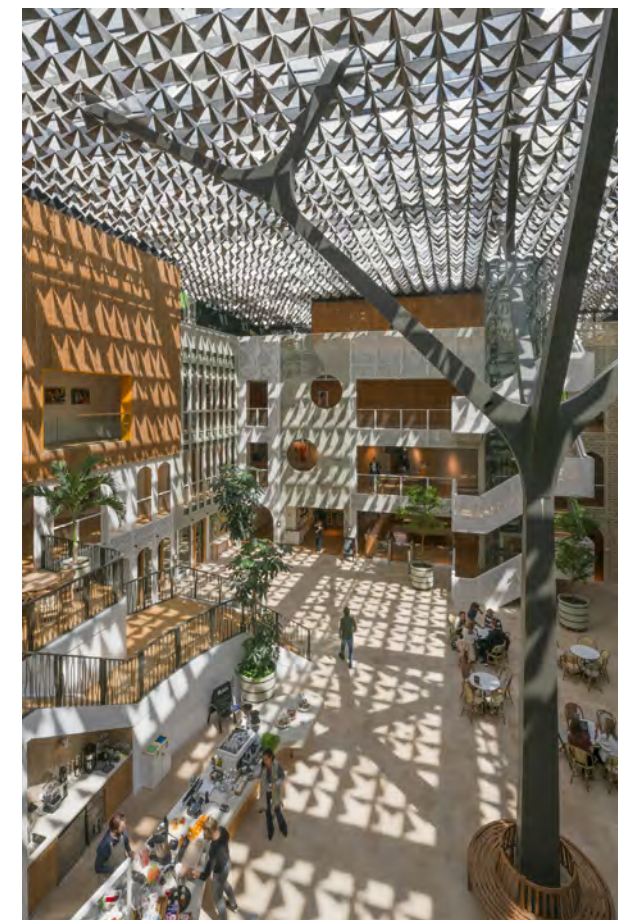
It means that we have succeeded in our mission to satisfy the users and radiate that to others: a great recognition of our expertise!

In general, what is your guiding design principle?

My mission is to design buildings that generate a feeling of happiness. That sounds simple, but taking into account aspects such as regulations, financial budget, client’s wishes, government agencies, climate, and sustainability, it is always an immense challenge. The task for us as architects is to be able to place yourselves in the user’s experience and try to give the place a function and meaning.

Last, what can we wish you for in the future?

Much more creativity and surprising projects with inspiring clients who also push the boundaries of architecture.



Dutch Charity Lotteries Office Building

An old transformed building became The Dutch Charity Lotteries office: a highly sustainable, energy positive, mixed use building. Demolished parts of the old building have been reused, and all new materials are sustainable and recyclable and can be repurposed in the future.

The close collaboration between architect and client lead to a building that meets the expectations. The client’s articulated wishes were expanded by intensive meetings with employees, making this a building that truly feels like a home.

The greenery at the old locations in the park are represented in the roof and its construction. The canopy is supported by tree-like columns and holds the PV cells. The roof is made of polished aluminum ‘leaves’ that create a beautiful dappled effect on the walls and floors, reminiscent of an actual walk in the forest.

With its public restaurant, TV studio, auditorium and 500 bike parking spaces, the building symbolizes some of the client’s core values: sustainability and sense of community. This building is not just a home for the Charity Lotteries’ 600 employees, but functions as an important boost for the entire business district and the adjacent residential area as well.

Company: Benthem Crowel Architects

Lead Designer: Saartje van der Made

Design Team: Jan Benthem, Gwendolyn Huisman,

Cees Zuidervaart, Alina Zaytseva, Volker Krenz,

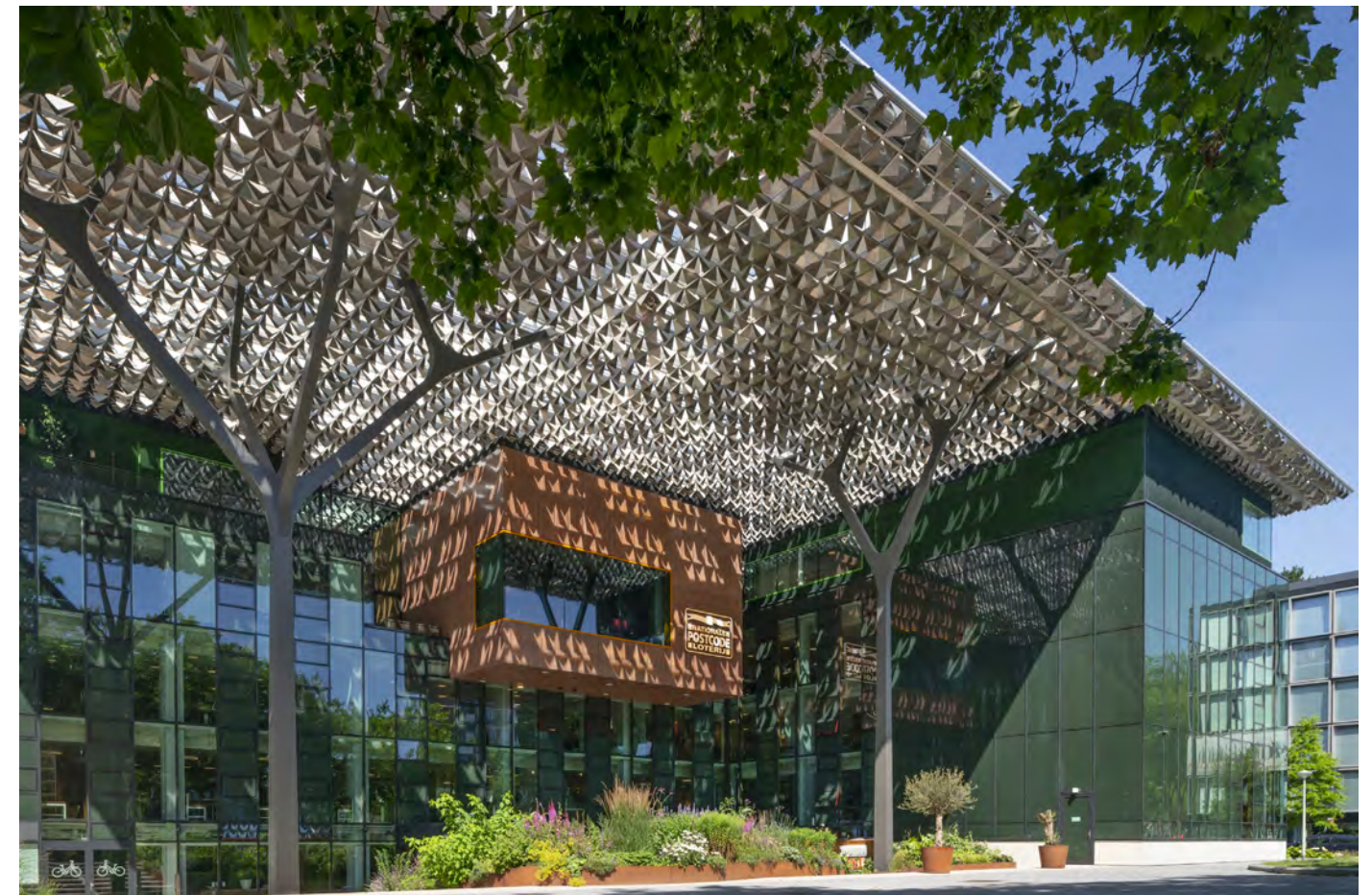
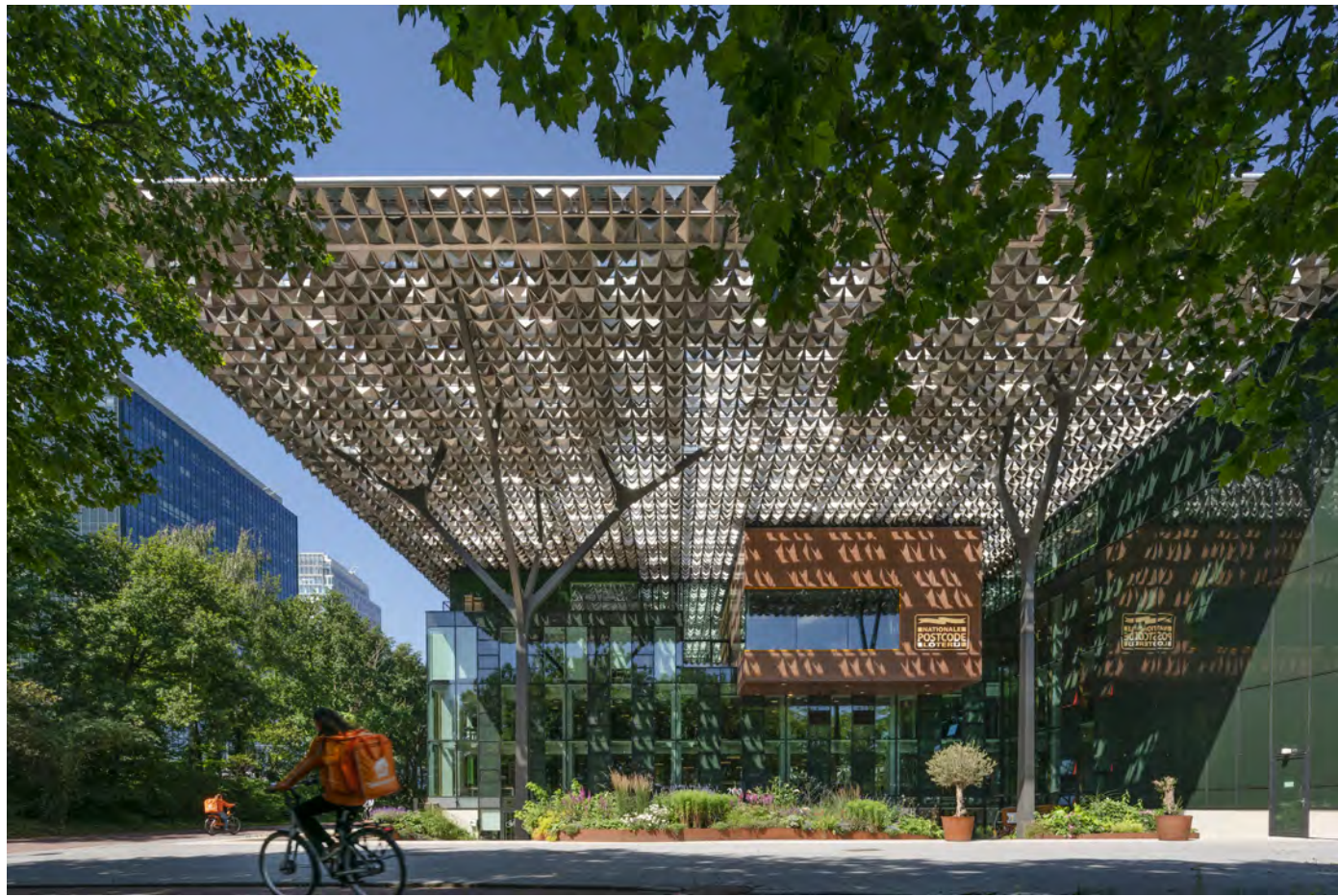
Daphne Tempelman

Location: Amsterdam, The Netherlands

Interior Designer: D/DOCK, Yolanda Loudont

Construction Company: Van Rossum

Raadgevende Ingenieurs



Mariam Abbadi

Emerging Architect of the Year



The Pathways to Unknown

A story and mysterious elements, hidden messages, maybe evidence, or even direct information about a sacred place or a funeral memory, walk in dark corridors underground and at the end of the corridor there's light, see and feel like the author of the story wants without realizing, there are options but all options are leading to the same result.

The transition from level to level, outside is inside, lower is like upper. Long underground corridor at the end there's glimmer. Here is the light, ramps goes up in square form, every direction has changed, finding the truth is hard.

Ramps go up and at the end of there is the outside, at the left there's a glass wall behind it there are Scientists but I can't talk to them, and they can't see me.

Now is the outside, no boundaries, no options. Obvious mass, 3 doors, you decide, your experience.

The stairs are built between rock divided from the middle by nature to be used in motion as if you were inside a cave, you are next to caves, but you do not realize it yet, all this journey makes you more attentive and more open to the unknown.

University: Applied Science University

Lead Designer: Mariam Abbadi

Design Team: Majda Yakhlef

Zhike Wang & Xiaoshui Li

Interior Design of the Year



Could you tell us a little about your professional journey?

We were college classmates, and in 2002, only two years after graduation, we co-founded Foshan Topway Interior Design Co., Ltd.

Now, for the last 20 years, we have been engaged in commercial space design, mainly designing headquarters buildings, interior exhibition halls, and office spaces for some enterprises.

How/when did you discover that you wanted to work in design?

Actually, our love for design started more than 20 years ago... At that time, we were both studying painting. Coincidentally, we started to learn about architectural design and interior design, which belong to the same category of art, and we decided to choose space design as our major. This is how we got to know each other at the university and we became classmates.

What was your inspiration to create this "Wonderland"? What material did you use to build the structure of the exhibition?

The creative inspiration for this project came from a trip to the United States with our family. We were lucky enough to visit The Antelope Valley, which has won numerous awards in photography exhibitions. This magical experience brought us a unique sense of nature and beauty.

We were inspired by all the natural elements of this site, from the sun, moon, stars, rivers, canyon rock walls, bridges, and waterfalls. They all touched our hearts, so we wanted to in-

tegrate these elements into our design. This "space" is an enterprise exhibition hall focused on customized metal. The entrance, stairs, and walls of the exhibition hall are made of stainless steel and are hand polished with different textures. This material has a very strong sense of "futuristic design," where science and technology merge under the reflection of light.

What was most important to you when planning this project?

When we were planning this project, we focused on how to combine natural elements with metal and lighting, and how to express the beauty of the space while deeply displaying the products, using all the space allocated to our design.

How would you describe your role in this project?

As designers of the project, we were like scriptwriters building an immersive space or directors organizing and executing the whole project.

We had to experiment and make many attempts before we found the right artistic application that we thought was right for the metal structure. We had difficulties persuading the owners to adhere to the original design, and how this artistic realization would bring commercial value.

Where do you get the motivation and inspiration for your work?

Our work is motivated by our love of design itself, as well as by challenging projects! Our inspiration comes from our passion for and observation of life, our genuine curiosity, and how we think about caring for humanity.

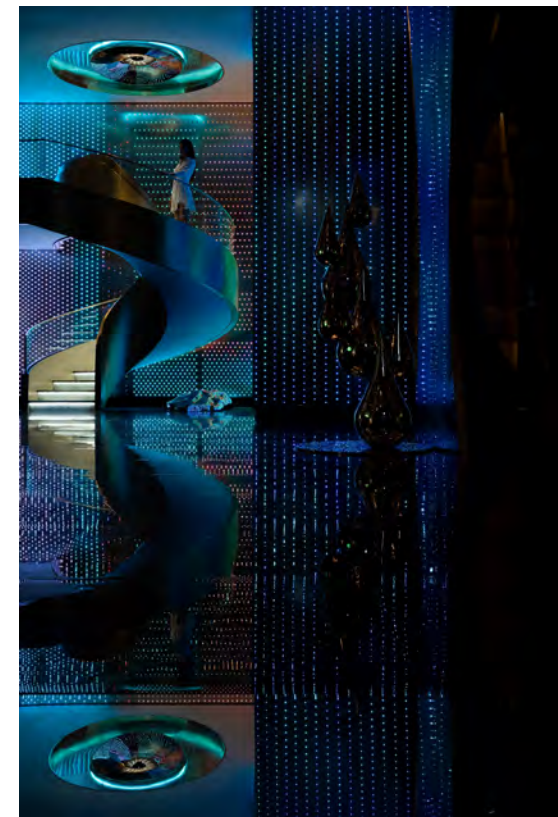
In general, what is your guiding design principle?

In general, our design guidelines are as follows: Firstly, it should be a design with a modern aesthetic feeling, and secondly, it should have a sense of art that resonates and touches the heart. Last but not least, it must meet the demands of users from different perspectives!

Lastly, what would be your best advice for young, talented interior designers?

For talented young designers, our advice is to keep doing what you think is right and take concrete steps! Never stop learning from your surroundings; connect and try to understand the world, then think about your own design methodology.

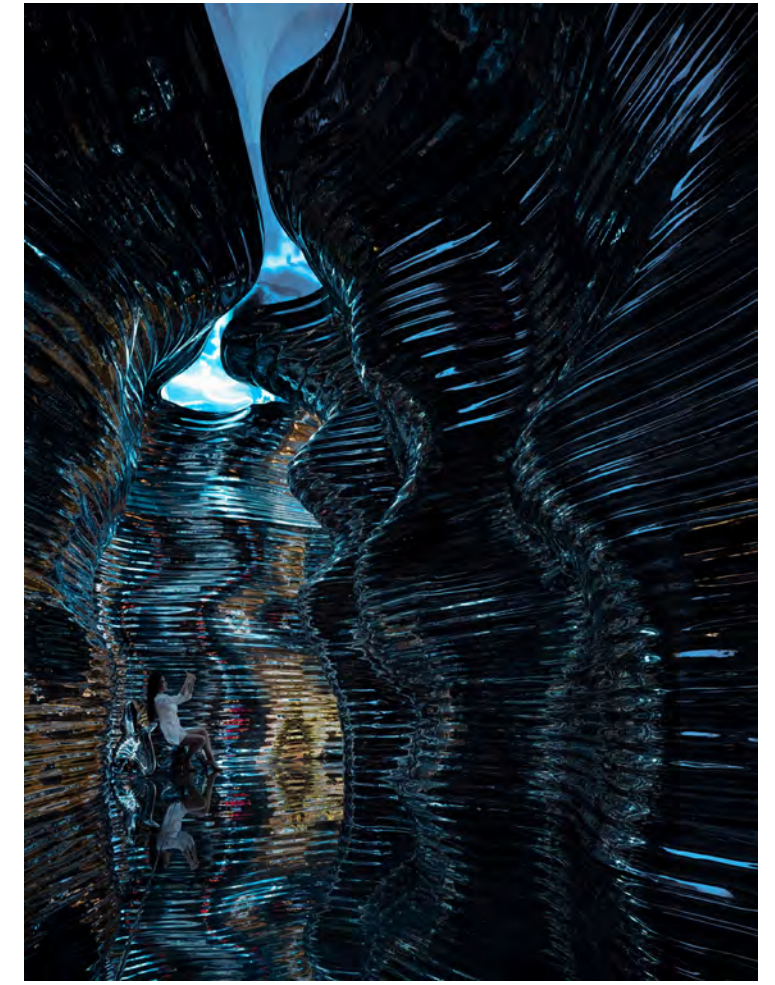
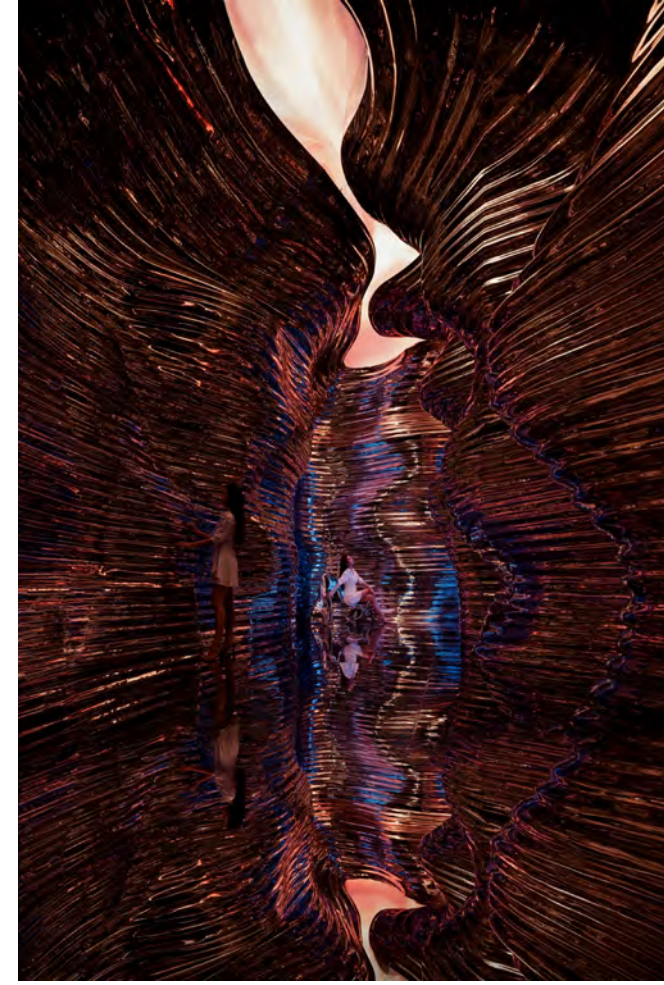
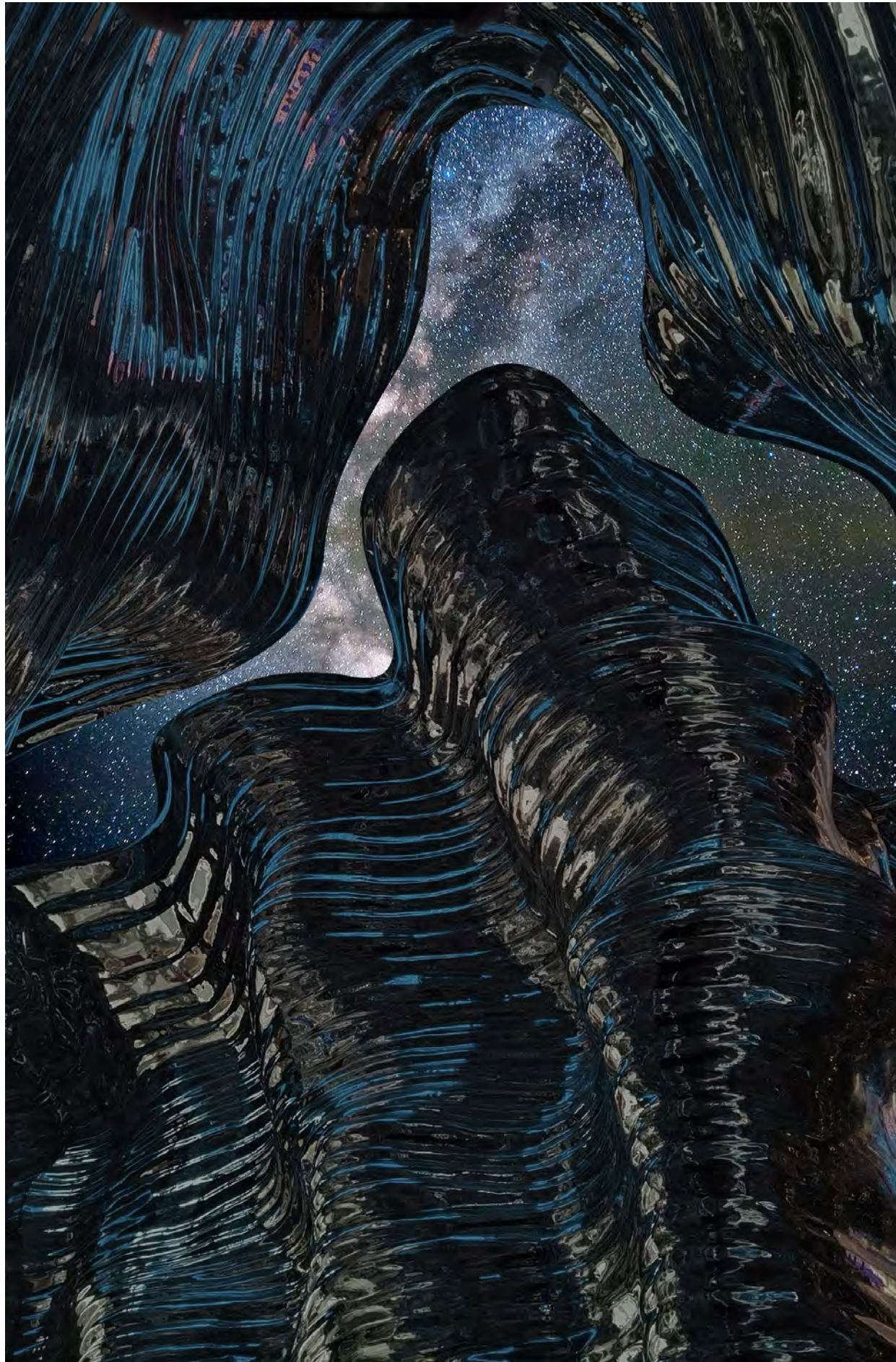
Finally, you should constantly improve your aesthetic vision and design abilities in all industries.



Naturalism Creates a Magic Wonderland

We approached the spatial narrative in such a manner with a view to paying tribute to nature and creating immersive experiences. Metal is extracted from ore and can be used to make iron, bronze ware and other products. We hoped to return metal to its original state and simplicity of nature. The walls on both sides of the "canyon" meander with unconstrained curves, and the trenches on the walls are stacked layer upon layer as if they've been weathered for thousands of years. The varying light and shadows are spectacular, creating surreal scenes. As moving in the space, looking up at the "galaxy" and observing the traces of cosmic civilization, visitors would marvel at the uncanny workmanship of nature and human's exquisite craftsmanship. Nature nurtures mankind's creativity, while we give back to nature with creative thinking.

*Company: Foshan Topway Design
Lead Designer: Zhike Wang & Xiaoshui Li*



Lu Kuan-Ju

Emerging Interior Designer of the Year



Innovative Chinese Paper Umbrella Store

This shop is located in the suburb area. The building is surrounded by forest. By early afternoon sunlight, which is more quiet and slow-paced. The focus of interior design is to show the effect of modeling cabinets. This design is inspired by the backbone of an oiled umbrella. The beautiful and orderly modeling section is formed by the arrangement of wood skeletons. The continuous pattern and product could smoothly merge into the display stands inside the space. Furthermore, soft light has enhanced the beauty of this design and also created a warm and relaxing environment.

University: Chienkuo Technology University

Lead Designer: Lu Kuan-Ju

Robert Yuen

Project Management of the Year



Could you tell us a little about your professional journey?

I studied architecture at the University of Illinois at Chicago and eventually earned a dual master's degree in Architecture and Digital Technologies at the University of Michigan. After graduation, I worked with some of the industry's most renowned firms and designers including SOM, Holabird & Root, and Blu Homes. At this point, I had already begun building Section Cut, a digital collection of design references and resources for architects that was beginning to flourish into a new model of design education. When I contracted software designers Dixon & Moe to enhance Section Cut's functionality, they invited me to join their firm, and I worked on designing software solutions for architecture, engineering, manufacturers, and construction clients. I joined the team to begin working on Monograph, a suite of resources and tools designed specifically for architects and became a partner of the firm in 2016. Eventually, this led to myself and two close peers turning Monograph into a unique platform of its own to address issues we saw within our industry.

Together with Moe Amaya, Alex Dixon, you founded Monograph in 2019, why start a new company? What did you envision back then for Monograph?

While working as an architect in Chicago, I would regularly meet with other friends in the architecture field for happy hour. We always talked about the same problems and the

lack of tools for running an effective business. In 2019, after hearing people talk about the same issues, myself, Alex Dixon, and Moe Amaya—all architects by trade that could build software—created Monograph. We created a practice operations platform tailored to the architecture, design, and engineering industries.

Back then, we envisioned Monograph as an answer to a problem many architects face, mainly working extra hours to keep up with a multitude of deadlines. We became committed to finding an answer. Today, the cloud-based system is intuitively designed for AEC professionals to oversee projects, timesheets, and forecasts in one simple and integrated interface to inform decisions about their business and projects in real-time."

Can you summarize what is "Resource by Monograph"? How would it support Architects and make their life much easier?

Resource is a tool by Monograph that allows users to see their firm's activity for the coming week on a single page. All of the projects they're working on, projected hours that team members plan to work, hours they've already worked, and all of the money that has been consumed, budgeted, and is remaining. But Resource isn't just a tool to look at—you can reallocate and adjust time for anyone on any project, ad-hoc. Firms can also add and remove people from projects, and are simultaneously able to see the impacts of that decision on current projections. It allows firms to focus less on meetings, saving both time and money and ultimately freeing up more time for designing.

What was the most important for you when developing this new software?

The most important factor for us when developing Resource was streamlining the weekly kick-off meeting that is standard at many firms. The ability to more accurately track and plan for the days ahead at the start of the week allows firms to maximize efficiency and spend more time bringing their ideas to life.

In the company's recent news, you have raised \$20 million in its Series B funding round, bringing a new investor Tiger Global. Congratulations! Today, what are your priorities for Monograph?

Thank you so much! We're thrilled about the second round of funding and are excited for the coming year. Today, our priorities for Monograph include building on the strong foundation of the company culture that we've created over the last few years while keeping our ears to our customers. Remaining in constant dialogue with our users allows us to troubleshoot, ideate, and introduce features that better address problems at a much faster rate. We hope to continue providing our users with awesome solutions to assist them with their day-to-day operations.

Do you have any upcoming projects or new features to be released that you're able to tell us about?

Monograph has a lot in the pipeline for 2022. One of the upcoming events we're most excited for is Section Cut Two, our second annual virtual conference for firm owners, office operations, and project managers across architecture, landscape architecture, interior design, and engineering. Scheduled for March 8-10, the conference is dedicated to the stories of leaders who are innovating in the realm of practice operations. We are beyond excited for the second annual Section Cut, and hope to see you there!

Lastly, what can we wish you for the future?

The future is bright for Monograph. We hope to continue building our team and introducing innovative tools to further assist firms with their practice operations. Monograph has grown from eight to 40 team members in the past year, and we recently hired Ernie Miller as our new Head of Engineering. Additionally, we recently closed \$20-million Series B funding, which will further assist our acceleration as the premier practice operations platform for the architecture community.

Monograph

Founded in 2019 by three architectural designers, Monograph is a practice operations platform transforming the way AEC professionals oversee projects, timesheets, and forecasts in one, integrated and simple interface. To date, the software has helped more than 200 firms manage over \$300 million in projects of all scales. The cloud-based system is disrupting the status quo by ridding firms of the ineffective spreadsheets and tools that treat cost, resource, and project management as separate activities. With Monograph, AEC professionals can provide a better client experience and are empowered with a solution that syncs a firm's range of tasks and responsibilities together in one cohesive workflow. Monograph's newest tool, Resource, addresses one of the most time consuming tasks the AEC industry performs weekly: Monday morning meetings. Traditionally, project managers and firm leaders use Monday morning meetings to sync with team members to discuss upcoming priorities and to reevaluate project schedules and deliverables. Resource allows firms to manage the complexity of real-time budgets and provides a streamlined solution that helps firms improve project outcomes.

Company: Monograph

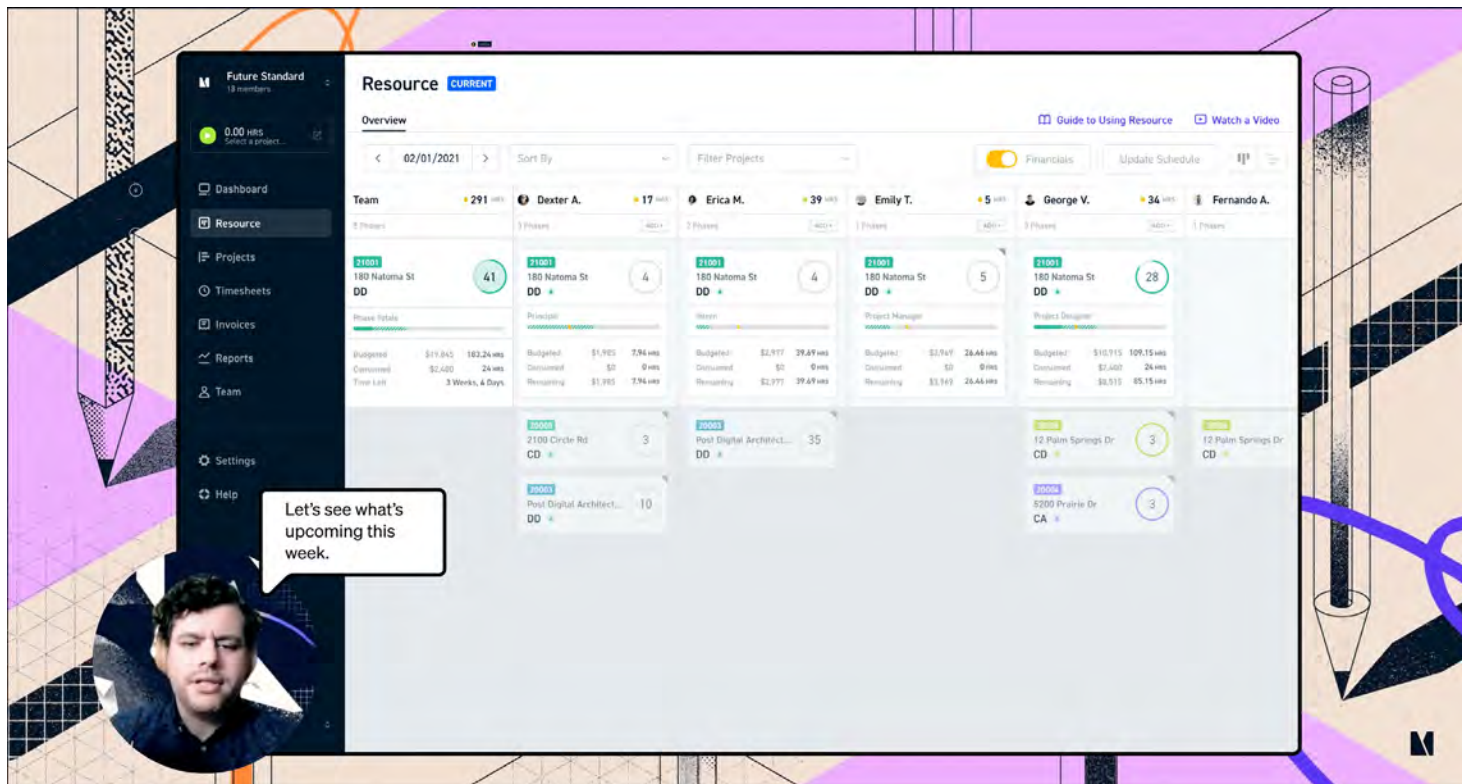
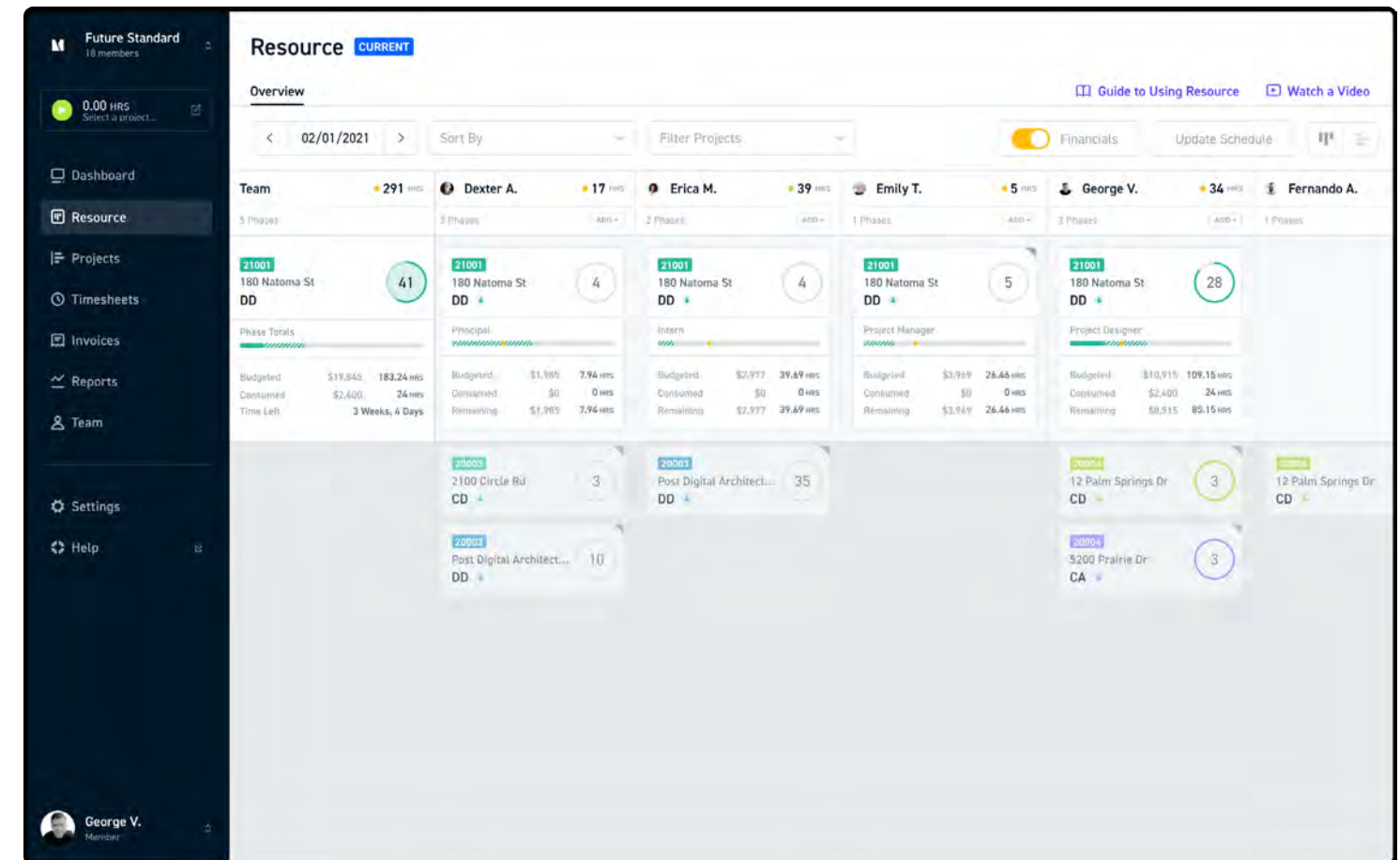
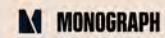
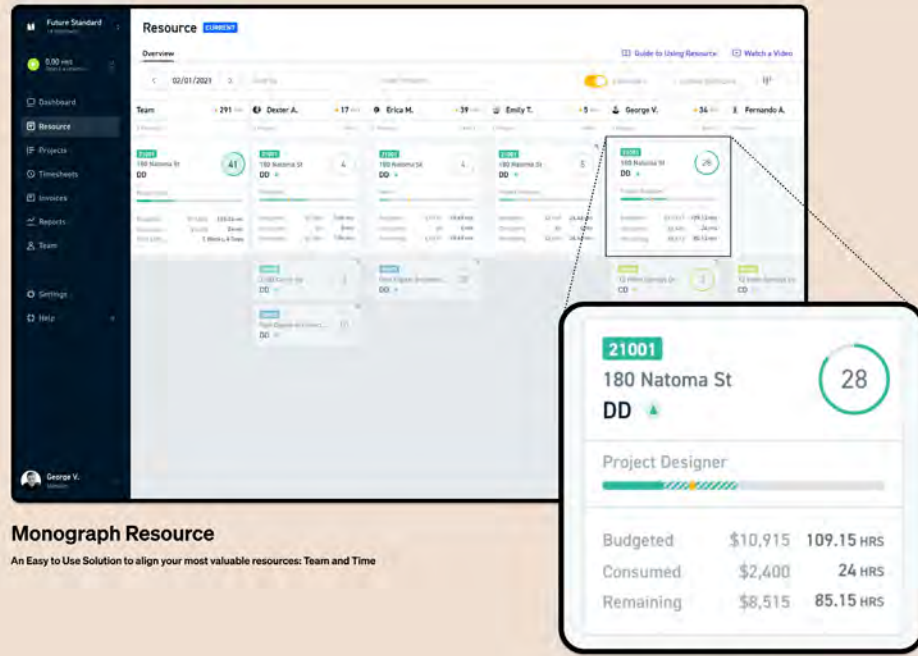
Lead Designer: Robert Yuen

Design Team: Moe Amaya, Alex Dixon

Your New Monday Morning Dashboard

Monograph's Resource is the way modern firms manage their most valuable resource: their team's time.

Empower your remote team. Spec a Modern Sync Today.



Chris Galley

Construction Product of the Year



Tubmarine and Kebony Wood

The Tubmarine is a new wood-fired hot tub, set to revolutionise the market. Combining expert craftsmanship with the world's leading construction materials, the Tubmarine heats up in under two hours, and requires no electricity and little maintenance. Made from 80% recycled materials it responds to the growing need for eco-friendly home and outdoor products. Kebony, a sustainable leader in modified wood, which is both weather resistant and highly durable, was chosen to clad the Tubmarine demonstrating a core commitment to eco-conscious living in the luxury, outdoor furniture sector.

Since 2013, the team behind the Tubmarine has been perfecting their designs to create the ultimate sustainable hot tub. Recognising the need for a shift from traditionally plastic products, and the desire for eco-conscious luxury living, the Tubmarine was expertly designed to become an environmentally-friendly alternative to traditional products.

The beautiful product is the sum of its innovative and forward-thinking parts, and is a testament to the powerful combination of expert sustainable engineering with artistic design vision in modern product design.

Company: Tubmarine/Kebony

Lead Designer: Chris Galley

Location: UK



architectural design



95th / Dan Ryan CTA Intermodal Terminal Station

EXP, United States

Lead Designer(s): Thomas Hoepf, FAIA

Winner in Bridges / Public infrastructures

Description: Located between the north and southbound lanes of I-94, the 95th/Dan Ryan multimodal Terminal Station reconnects southside Chicago communities to opportunities throughout the City. This largest reconstruction in CTA history included renovation and expansion of the North Terminal, construction of a new South Terminal, boarding platforms and bus canopies.

Designed as a gateway to Chicago with its iconic "brow" projecting over the highway at the north/south entries, it was conceived as a continuous ribbon stretching south to north, tying the terminals together with the thinnest point at the pedestrian bridge across 95th Street.



Washington / Wabash Elevated CTA Station

EXP, United States

Lead Designer(s): Thomas Hoepf

Winner in Bridges / Public infrastructures

Description: MOVEMENT is the heart of transit, and the CTA is the thread that weaves through Chicago to connect the City of Neighborhoods. The Washington/Wabash Station transforms the perception of public transit in Chicago as the new gateway to Millennium Park and the city's downtown attractions.

The wave form weaves through the historic Wabash Avenue canyon as an undulating counterpoint to the city grid, and anticipates the soft forms of the park and lake beyond.



Fire Station Hohenweiler

Heike Schlauch raumhochrosen, Austria

Lead Designer(s): Heike Schlauch

Winner in Bridges / Public infrastructures

Description: With regard to urban development, the tower of the new fire station rises 12-metre high and marks the beginning of the village's center.

In order to build this fire station in a local community of 1,300 inhabitants, a compact, efficient solution was found, that connects functional requirements and amenities of community life in an appropriate way. The building is divided into three functional zones: the garage and workshop sector with four parking spaces, then slightly elevated the 2-story high front of the building that includes the second entry level, foyer and stand-by room.



North/South metro line

Bentham Crowel Architects, Netherlands
 Lead Designer(s): Jan Bentham
Winner in Bridges / Public infrastructures
 Description: After 22 years the Amsterdam metro link from the north to the south was. Bentham Crowel Architects designed seven metro stations for the line: Noord, Noorderpark, Amsterdam Central Station, Rokin, Vijzelgracht, de Pijp, and Europaplein. Two stations above ground and five stations underground, along a route that is almost ten kilometers long. Amsterdam residents, commuters, tourists, day trippers, and metro admirers can now travel from the north to the south in just 15 minutes.



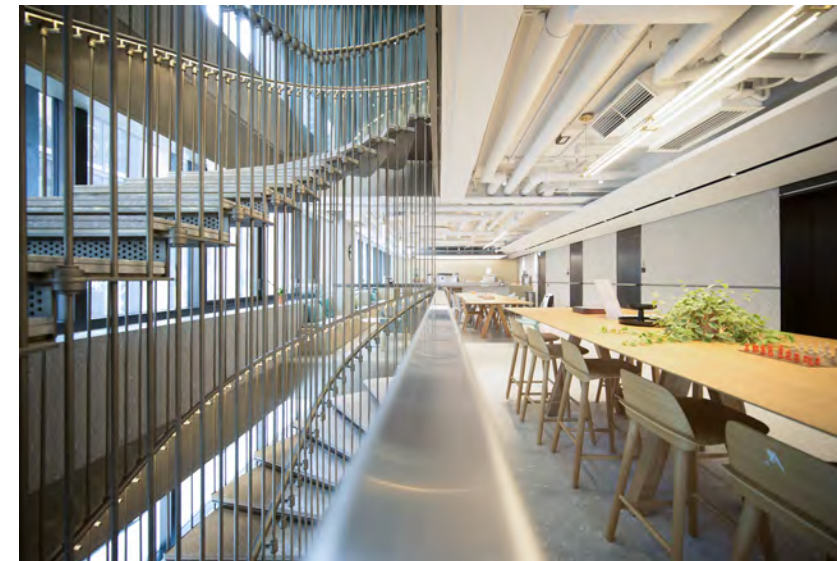
G8 Bordeaux

Martin Duplantier Architectes, France
 Lead Designer(s): Martin Duplantier
Winner in Commercial Architecture
 Description: POST-INDUSTRIAL CATALYST The plot is set at an exceptional location, facing the wet docks and open to major public space of the neighborhood. It addresses its surrounding environment through an active groundfloor: retail spaces and main entrances. The program hosts a business school and acts as a catalyst for this regenerated neighborhood of Bordeaux. In an eclectic environment, with architectural inflation, the project gives a quiet and abstract expression: the concrete skeleton recalls the rationally industrial past of the site, all the while conferring an abstract and timeless aesthetic.



Christopher Cassaniti Bridge

Ki Studio/Arup, Australia
 Lead Designer(s): Miguel Wustemann
Winner in Bridges / Public infrastructures
 Description: The sinuous, spiralling electric blue structure integrates seamlessly with the landscape and new park, delivering a unique design and a memorable bridge that meets the brief in both function and outstanding elegance. Key inspiration was to create a sculpture in the landscape that users experience, whilst providing a unique landmark that cements the identity of the precinct. The fluid form language continues into the organically designed park creating a striking ensemble.



Sun House

Shadow Design Limited, Hong Kong
 Lead Designer(s): Benjamin Lam, Kin Cheong Chan
Winner in Commercial Architecture
 Description: SUN HOUSE is the first ever coworking tower in Hong Kong. The 21-storey tower is a total revitalization to the old headquarter of The Sun Group. The project is driven by questioning what is the most suitable working in the modern days. Working and entertainment are no longer separatable, but closely related to enhance productivity. The design of the tower also focuses on marrying between the old and new, history and modernity. As the original exterior of the building is deteriorated and obsolete, a skin system is introduced as the new façade to the architecture.



Audubon

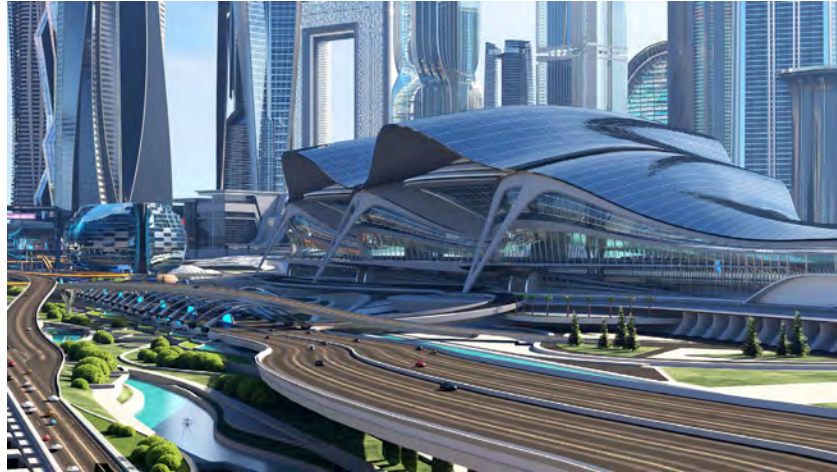
Beinfield Architecture PC, United States
 Lead Designer(s): Bruce Beinfield
Winner in Commercial Architecture
 Description: The site is a city block in downtown New Haven that had been utilized as an on-grade parking lot. The program was to relocate the parking component into an above-grade parking structure and develop 400 residential units on the property. The first phase of the project is complete and consists of 169 apartments, parking for 700 cars and a new restaurant on the most prominent street corner.

Architecturally the public areas celebrate the warmth and texture of the raw concrete structure, and layer over that a palette of concrete block and hot rolled steel as a backdrop for comfortable furnishings.



Fengsheng 101

Gwp Architects, China
 Lead Designer(s): Guowei Zhang
Winner in Commercial Architecture
 Description: The Fengsheng 101 has a total construction area of approximately 81,000 square meters and a height of 200 meters, including a wide spectrum of programs mentioned above such as hotels, office spaces, apartments, and retails. Through conversation with the owner, GWP has obtained a comprehensive image of how Fengsheng Group has achieved the diversified business model consisting of real estate along with other investments with breakthrough in the energy industry, just like how a seafaring ship sails with the wind towards unprecedented.



Multifunctional Center

Pe Dovzhanskii Denis, Russian Federation
 Lead Designer(s): Denis Dovzhanskii
Winner in Commercial Architecture

Description: A conceptual multifunctional center that is part of the project of the city quarter of the near future. The building is a basic perspective solution of soft lines for multi-use in an urban environment, combining a large transport hub, retail space, recreational areas, etc.



He Art Museum

Tadao Ando Architect & Associates, China
 Lead Designer(s): Tadao Ando
Winner in Cultural Architecture

Description: Located in Shunde, Guangdong, He Art Museum (HEM) is a family found, non-profit private art museum designed by Tadao Ando.

Focusing on the culture and arts in modern and contemporary period with an international vision, HEM is devoted to present compelling art exhibitions, as well as diverse and open cultural activities. With its unique qualities, HEM hopes to establish a hub of communication to explore the integral values of cross-cultural exchange.



Nanjing Laoshan Ecological Tourism Commercial Center

Ivy Architectural Design, China
 Lead Designer(s): Guogang Cai, Mingzhe Yu
Winner in Commercial Architecture

Description: The project includes boutique shops, hotels, tourist service centers and other forms of business, which is a very dynamic urban complex. It is designed to be a "one-stop charming destination for leisure life", integrating three concepts: "complex business form", "charming space" and "experiential behavior". At the same time, we also adopted the "control both ends, grow inward" layout. Control both ends -- Taking into account the overall image of the project, the iconic hotel is placed on the north side of the project.



Reconstruction of Historical Buildings in Moganshan Silk Farm

LZAD, China
 Lead Designer(s): Cong Li
Winner in Cultural Architecture

Description: This transformation is a connection of "history and contemporary", the Architecture has its own language, recording stories and retaining emotions in a special way. The design unearthed the most secret origin of the building. Give him the development pattern of this life with a new language of expression. Spring silkworms metamorphose into Huajin's pure and endless Freshmen is a commercial space experience of western food + music bar. The symmetry of the building and space and the unique array form traveling from history to the present with the transition of time and space. Visually emphasizes the dignity of order repeatedly.



The Future of Us Pavilion

SUTD AAL, Singapore
 Lead Designer(s): Thomas Schroepler
Winner in Cultural Architecture

Description: Located in Singapore's Gardens by the Bay, The Future of Us Pavilion follows the tradition of architectural structures that evoke a dialogue with nature by blending an intricate form made of a perforated skin fluidly with the adjacent environments. For visitors, it offers a climatically comfortable outdoor environment and a stunning visual experience akin to walking under the foliage of tropical trees - an idea of future nature. Originally built to house The Future of Us exhibition, the golden jubilee capstone event of Singapore, and completed for its current purpose in 2019, the project has since become a landmark in the Gardens that serves as a public space and venue for important community and cultural events including the annual Singapore Garden Festival.



Strait Culture and Art Center

CCDG&PES, China
 Lead Designer(s): Zong Wu Xu&Pekka Salminen
Winner in Cultural Architecture / Mixed-Use Building

Description: The Strait culture and Art Center is located on the Bank of Minjiang River in Fuzhou City, Fujian Province, with a total construction area of 152600 square meters. It is a cultural complex including multi-functional Theater Hall, opera house, concert hall, art museum, film and television center and central culture hall. The design inspiration of this project comes from Jasmine. Jasmine is a world-famous Chinese cultural symbol, and it is also the city flower of Fuzhou.



Future Art Lab Vienna

Pichler & Traupmann Architekten , Austria
 Lead Designer(s): Christoph Pichler, Johann Traupmann

Winner in Educational Buildings

Description: The new building for the Future Art Lab will complete the development of this special campus, which is reminiscent of Anglo-American models and is unique for Vienna. On account of this, and due also to its location at a prominent position, this building has a special importance, which makes it possible to especially accentuate the canon of the buildings on the campus at this point.

This free-standing, embedded building which can very much be understood as an apparatus, accommodates the apartments of electro acoustics, composing, film and television and those for keyboard instruments.



UC San Francisco Joan & Sanford I. Weill Neurosciences Building

Mark Cavagnero Associates , United States
 Lead Designer(s): Mark Cavagnero (MCA), Suzanne Napier (SmithGroup)

Winner in Healthcare / Wellness Facilities

Description: The first center to integrate the research and treatment of neurology and psychiatry at UCSF, the Weill Neurosciences Building challenges the traditional boundaries of these disciplines through a program that fuels connectivity and collaboration.

From the outset of the project, the integrated project team drew inspiration from the incredible scientific research and innovative patient treatments that the scientists and doctors are doing already and that this building will support.



San Francisco State University Liberal and Creative Arts Building

Mark Cavagnero Associates, United States
 Lead Designer(s): Mark Cavagnero

Winner in Educational Buildings

Description: The new Liberal and Creative Arts Building at San Francisco State University is the first new academic building completed at SF State in 25 years. The building is a state-of-the-art testament to the strength of SFSU's program, slated to prepare the coming generations to lead and evolve the media landscape. The design team built consensus with multiple departments, stakeholders, and end-users to deliver the final design.

The new building includes two multi-story television studios, along with a TV newsroom; radio station; video post-production space; audio recording, production, and post-production space; and related classroom space for the Broadcast and Electronic Communication Arts (BECA) program.



The Photographer's Studio

Forest Architecture Limited, United Kingdom
 Lead Designer(s): NATALIE SKEETE
 Winner in Heritage Architecture

Description: The Client for this project is a portrait photographer who travels the world capturing photographs. He didn't have the space within his home to accommodate a studio space so he approached our practice to design a new structure within his garden. The space for the studio had an asymmetric shaped, formed by historic garden walls, as the house and walls are Grade II listed. Whilst one side of the surrounding context is historic in nature, the other side has an industrial landscape.



Quest Diagnostic Traveler Lab

Mark Cavagnero Associates and Flad Architects , United States

Lead Designer(s): Mark Cavagnero
 Winner in Healthcare / Wellness Facilities

Description: The new Quest Diagnostics East Region Development represents a cultural shift for the company, breaking down the traditional silos between disciplines, and building spaces for communication and collaboration. The project brings together clinical, laboratory, and administrative offices, previously housed in four different locations in the region, to create a vibrant and inviting central campus.

The two story building consists of large ground level laboratory, laboratory support spaces, second floor offices, and amenity spaces arranged as a linear bar along the north side of the building.



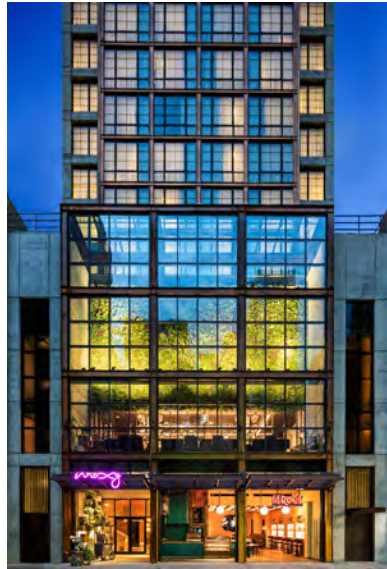
Castaway Island Resort

Vo Trong Nghia Company Limited, Viet Nam
 Lead Designer(s): Vo Trong Nghia

Winner in Hospitality Architecture

Description: Castaway Island Resort is located in Cat Ba Archipelago and can accommodate up to 160 guests. The site is only accessible by boat, which takes about two hours from Hai Phong port. The resort aims to provide a memorable stay at the island which is surrounded by tropical nature.

It consists of five huts, a restaurant and a pavilion. Bamboo is used for the project, an environmental-friendly material that can integrate in and be easily removed afterwards without affecting the natural beautiful gulf at the site where the project is built.



Moxy Chelsea

Stonehill Taylor, United States
 Lead Designer(s): Neill Parker, Principal
Winner in Hospitality Architecture
 Description: At 35 stories, the architecture of the 349-key Moxy NYC Chelsea is inspired by the dichotomy that exists within the surrounding Flower District neighborhood. The hotel brings together industrial and natural design elements to create a destination in dialogue with its location while maintaining a modern edge through innovative design.

The hotel's most striking feature is the juxtaposition between the exposed concrete walls and the greenhouse-like façade.



Siège Social Eddyfi

Coarchitecture, Canada
 Lead Designer(s): César Herrera
Winner in Industrial Buildings
 Description: This new headquarters of a company specializing in the research and manufacture of non-destructive electromagnetic testing technology instruments is located in the industrial park of the Michelet innovation space in Quebec City.

The lot chosen has an irregular geometry and the natural constraints present on the site made the implementation of the project complex. All site data were considered in the design of the building.

The "T" shape of the new headquarters was generated by the thoughtful distribution of the three blocks housing the essential functions.



Island Escape by Burasari

Original Vision Limited, Hong Kong
 Lead Designer(s): Adrian McCarroll
Winner in Hospitality Architecture
 Description: The clue is in the name. Every architect wants to bring out the Robinson Crusoe in them and this is what we were asked to do on Coconut Island off the east coast of Phuket. Thailand has long been the destination of backpackers intent on discovering Asian tropical island life. With the aim of perpetuating those desires we were tasked by Burasari to create a destination island resort that evokes all the grit and romance of those youthful adventurers yet transports the experience fully into the 21st century and provides unrivalled comfort, luxury and amenity.



Paniza Wineries

Marta Gonzalez Arquitectos, Spain
 Lead Designer(s): Marta Gonzalez Alonso
Winner in Industrial Buildings
 Description: Paniza Wineries are designed based on the pursuit of providing wineries with a Singular design space that was representative of their brand.

Its bold geometry with volumes of broken shapes tries to convey the desired singularity, to give strength to the design of its facilities.

In terms of program, a main volume has been designed housing the Office area with, workrooms, offices and meeting rooms. It is a limestone element with a cantilevered volume that houses the double height tasting room inside.



Aria Hotel

Sanjay Puri Architects, India
 Lead Designer(s): SANJAY PURI
Winner in Hospitality Architecture
 Description: The gently contoured site for this hotel is situated in Nashik, India. The clients requirements included a large banquet hall of 15000 sq ft in addition to 60 rooms and other facilities. Rooms form rectilinear cuboids that are angled differently creating balconies that frame the picturesque surroundings with 2 floor high suites at the topmost levels. Painted in terracotta color stucco, these frames are juxtaposed with the black basalt stone walls of the lower floors.



Film Archive and Preservation Center

Cooritalia, United States
 Lead Designer(s): Earl Wilson
Winner in Institutional Architecture
 Description: Cooritalia was commissioned to produce 42,000 square feet of custom roof tiles for the Film Archive and Preservation Center in Santa Clarita, CA. Our existing relationships with vendors and factories in Europe, expertise in natural stone resource, and experience managing small and large cut to size projects made us uniquely prepared for this project. Inspiration for these roof tiles was drawn from historical details and Corinthian style found in the Neoclassical Greek buildings like the Stoa of Attalos.



V-Plaza

3deluxe, Germany

Lead Designer(s): Dieter Brell
Winner in Landscape Architecture

Description: In the midst of a newly designed building ensemble boasting bright facades and ultramodern workspaces the German architecture practice has created a visionary plaza that is a celebration of contemporary mobility. Cyclists and scooters cruise along organically curved levels, between them oases of tranquility, water features, cafes and restaurants.

This hybrid of skatepark, playground and urbane living room has now opened – the perfect venue for a young, dynamic society.



Kaban Lake System Embankments

"TURENSCAPE" landscape bureau + «MAParchitects» + consortium, Russian Federation

Lead Designer(s): Dr. Kongzhan Yu, Poroshkin A, Valiullin A.

Winner in Landscape Architecture

Description: The Kaban lakes system is a natural monument, the largest lake system in terms of water area (193 hectares) in Tatarstan. There are 24 cultural heritage sites along the design area. Since 19th century, industrialization has been the cause of lakes' water pollution. Despite the 30-year-long treatment measures, the water remains dirty and the ecosystem is deteriorating. The Turenscape + MAP consortium won the competition in 2015 for the development of the concept, initiated by Natalia Fishman-Bekmambetova, the Assistant to the President of the Republic of Tatarstan.



Shenzhen Civil Code Ring Park

PMA (PolyMorphArchitects), China

Lead Designer(s): Chuan Wang
Winner in Landscape Architecture

Description: Under the target requirements of "international standard" and "domestic first-class", a civil law park with the theme of civil law, focusing on community recreation and embodying the concept of civil law, has been recently built by PMA (PolyMorphArchitects) after three years of hard work.

The Shenzhen Civil Code Ring Park reflects the concept of civil law, while focusing on public entertainment. It provides abundant experiences of the urban park, memorials and mountain trails, aiming to explore the symbiotic relationship between ecology and culture.



Canine and Feline Hotel

Raulino Silva Arquitecto, Portugal

Lead Designer(s): Raulino Silva

Winner in Miscellaneous Architecture

Description: The main program consists of temporary dog and cat accommodation, a hotel where the animals stay for a few days, during holidays or professional travel of their owners. The remaining program is a complement to the space's activity, with a veterinary office, a grooming room, outdoor training areas and a swimming pool for pets.

The program is distributed over three buildings that are interconnected, allowing to create three different areas. This way we got to separate the cat zone from the dog zone, avoiding the meeting of both and reducing the animal noises.



Changsha Yango Xi Shan Yue

Centaland Architectural Design, China

Lead Designer(s): Wang Bo

Winner in Mixed-Use Building

Description: Yango Xi Shan Yue, takes advantage of its geographical advantages, combines the elevation difference of the site and the hydrological environment in the plot, and excavates the natural artistic conception of the city. With the concept of Emerald Forest, it creates a "dream" like the wizard of Oz. the integration of "nature" and "transparent green" forms a beautiful theme picture. It creates a multiple space with natural lingering and a dream of Wizard of oz.



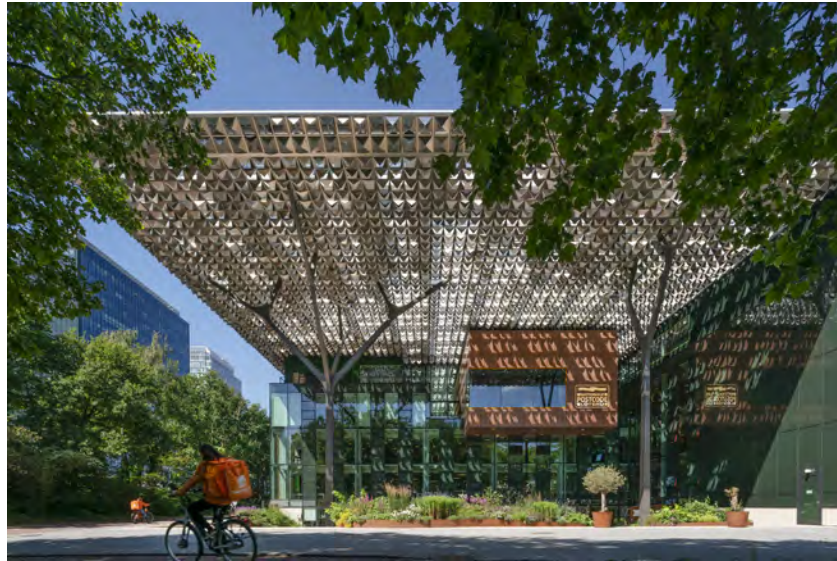
UP! Berlin

JASPER ARCHITECTS, Germany

Lead Designer(s): Martin Jasper

Winner in Mixed-Use Building

Description: A new chapter for an icon of Berlin's city history: In 2016 Martin Jasper and his team at JASPER ARCHITECTS won the design for the competition organized by SIGNA, for an overall transformation of the former "Centrum Warenhaus", built in 1979. The competition task was to present a concept to turn this massive squared building block of 80x80 meters into office space for the digital era. The building was originally conceived as an introverted building without openings.



Dutch Charity Lotteries Office Building

Bentham Crowwel Architects, Netherlands
 Lead Designer(s): Saartje van der Made
Winner in Mixed-Use Building
 Description: An old transformed building became The Dutch Charity Lotteries office: a highly sustainable, energy positive, mixed use building. Demolished parts of the old building have been reused, and all new materials are sustainable and recyclable and can be repurposed in the future.

The close collaboration between architect and client lead to a building that meets the expectations. The client's articulated wishes were expanded by intensive meetings with employees, making this a building that truly feels like a home.



OR Damesek Synagogue

MAYER HASBANI, Mexico
 Lead Designer(s): Mayer Hasbani
Winner in Religious & Spiritual Buildings
 Description: OR Damesek is a place of worship of Judaism that develop in 4 levels and a basement, turning internally the nave of the building towards the east following the tradition of Jewish prayer directed towards this direction. The concept is composed by the interaction of two bodies, one given by the rectangular shape of the land and another body that incorporates the main program of the building creating a bay that marks the access to the building; to the public and private spaces and their circulation.



Bamboo Branch Academy

Archermit, China
 Lead Designer(s): Youcai Pan
Winner in Recreational Architecture
 Description: "Bamboo Branch Academy" is created by remodeling two old houses in southern Sichuan. The functions of the music workshop, academy, and meditation should be well combined to separate Bamboo Branch Academy into two parts. The house far away from the road is serene and properly protected. It is renovated and turned into an academy for meditation. The one near the road and thus noisy is severely damaged and should be rebuilt into the music workshop. The two academies are connected by a corridor to create an "image" of "surrounding the house" and a multi-functional outdoor space to add vitality.



Great Ocean Road Residence

Rob Mills Architecture & Interiors, Australia
 Lead Designer(s): Rob Mills
Winner in Residential Architecture
 Description: The brief for Great Ocean Road Residence was to create a home-away-from-home against a spectacular coastal backdrop for a growing family, and a place of sanctuary for generations to come. Sited on a unique position atop a prominent cliff, the residence was designed to withstand a harsh marine environment with robust materials, practical ingenuity and timeless aesthetics. Crucial to the architecture is its embrace of the wild Australian coastline.



White Mountain

Kris Lin International Design, China
 Lead Designer(s): Kris Lin
Winner in Recreational Architecture
 Description: The project is located in Nanjing. The project base is located in the underground space. The strategy applied in this project is to combine the surficial landscape space and the underground construction, integrating the concept of mountain shapes to create a landscape-style building. In this way, the building's perception of solidity will be weakened to fully integrate into the urban space. It also reduces the interference of the building to the urban environment and maintains the continuity of the urban landscape space.



White Lodge

Measured Architecture, Canada
 Lead Designer(s): Piers Cunnington + Clinton Cuddington
Winner in Residential Architecture
 Description: Conceived and created as a gathering space, White Lodge offers its owners and their two children a respite from the pull of their daily lives. Here, they gather with friends, share meals and play board games – reconnecting with themselves and each other. White Lodge is a confluence of form and function. The cantilevered form floats over the driveway, born from the practical need of loading and unloading vehicles under cover from the range of precipitation.
 Photo Credit: Ema Peter



Villa Andersson

Abelardo Gonzalez Arkitektbyrå Ab, Sweden
 Lead Designer(s): Abelardo Gonzalez
Winner in Residential Architecture
 Description: VILLA ANDERSSON is a single family home located in Frösakull, overlooking the sea of Kattegatt.

The house is designed to have “lungs”. These “lungs” are a combination of large voids and skylights that together create a passive ventilation method while providing an abundance of natural light. When opening a skylight, a chimney effect occurs in the void and a natural circulation is achieved. Due to regulations, the project is also equipped with an active ventilation system that can ensure a pleasant indoor climate in case of extreme weather conditions or during harsh winters.



Boulder House

atelierjun, Korea
 Lead Designer(s): Junsang You
Winner in Residential Architecture
 Description: The Boulder House is a residential house for a client who puts privacy first in an area where securing privacy is difficult. To secure privacy, the architect minimized the windows except the direction to the garden in the east, and due to this, the building couldn't have avoided looking especially massive. To make this rarely-seen characteristic of the building stand out, the architect planned it to look like one gigantic boulder. The architect took great pains in the selection of exterior finishing materials and construction methods to make the building look like one gigantic boulder, and the result is the boulder-looking house.



Lagoon House

Measured Architecture Inc., Canada
 Lead Designer(s): Piers Cunnington + Clinton Cuddington
Winner in Residential Architecture
 Description: The clients, a couple with four children, wished to replace a small cabin on Alta Lake with a larger home that would allow for year-round, full-time living.

The project presented some unique site challenges as the narrow, trapezoidal lot was surrounded by a forest of towering conifers, deep-green lake waters and loamy soil, while the complicated steel structure required 3D models of every bolt and connection to work out problems prior to ordering any materials.
 Photo Credit: Ema Peter / Drone picture: Ben Taft



Royal

William / Kaven Architecture, United States
 Lead Designer(s): Daniel Kaven and Trevor William Lewis
Winner in Residential Architecture
 Description: At the end of a long, sinuous road elevated high above the city in Portland's beloved Forest Park, the Royal residence is perched elegantly at the coveted ecotone of forest and city along Royal Boulevard. Enter through a dramatic foyer with clerestory windows into the main living area, which features white oak floors with dark walnut inlay borders, a substantial wood-burning hearth, and a kitchen lined with custom-designed, handcrafted oak cabinetry.



Veil House

Measured Architecture, Canada
 Lead Designer(s): Clinton Cuddington + Piers Cunnington
Winner in Residential Architecture
 Description: Our client, a family of four, wanted to root themselves in this charismatic neighbourhood in Vancouver. At the same time, this private client requested that their house be a refuge somehow veiled from the street. The architects realized they could achieve this by bucking the extroverted facades typical of Vancouver homes. The designers also focused on sustainably dismantling the existing home on the site—less than 7% entered the landfill—74,000 kg of materials was repurposed and 9,000 kg was sent for reuse on other builds in the region.
 Photo Credit: Ema Peter / Drone picture: Jesse Laver



Shift House

Measured Architecture, Canada
 Lead Designer(s): Clinton Cuddington + Piers Cunnington
Winner in Residential Architecture
 Description: Shift House sits on a family-friendly street in Vancouver's east side. Its massing of two distinct ridged elements reflect and respect the common architectural silhouette of the neighborhood while expressing a distinct and playful identity. This sense of play starts with the outside. The cladding, a 45-degree pixelated cedar shake pattern, picks up the contextual coloration of the site, referencing the unpretentious diamond shingle of a fisherman's shack.
 Photo Credit: Ema Peter



Royd Clan's House

Level architecture, Australia
 Lead Designer(s): Nadine Samaha
Winner in Residential Architecture
 Description: Understanding the aspirations and brief of my repeated clients, the concept was inspired mainly by the environmental context that enjoys 360 degrees views of the Ceres Hills and the late 1880's house ruins. The pavilions emulate the existing on-site boulders. They are linked through glass roofs and vertical circulation connectors. This playful cluster design that followed the Passive Design Principles, maximized the North orientation, disrupted the wind turbulence and integrated with the surrounding landscape.



The Street

Sanjay Puri Architects, India
 Lead Designer(s): Sanjay Puri
Winner in Residential Architecture
 Description: Inspired from the old city streets of Mathura this 800 room university hostel creates organic spaces. 5 linear blocks snake across a wedge shaped site bending along their length. Sitting adjacent to repetitive hostel blocks on either side these new blocks create individual spaces with a discernible identity in each part of the layout. The orientation of all blocks are done with a view of generating large north facing gardens overlooking a vast playground.



Laurel Hills Residence

Assembleage+, United States
 Lead Designer(s): David Thompson
Winner in Residential Architecture
 Description: Composed of three pavilions connected by a series of glass hallways, the single-story residence seeks to create a residential oasis. The Western Red Cedar lined guest house/garage pavilion establishes a datum line that carves and connects the two larger volumes of the living and sleeping pavilions, comprised of the oversized charcoal-coloured board, batten extira and cement board siding. The fluidity between the kitchen, breakfast room and family room, designed for uninterrupted entertainment, creates a harmony of transparency and lightness.



White House Homestay Cluster in Xinji

Atelier Cns, China
 Lead Designer(s): Guanqiu Zhong, Gang Song, Zhiyuan Zhu
Winner in Restoration & Renovation
 Description: The most crucial method of the White House Homestay project is to integrate the roof terrace space of the four independent houses that were originally owned by different owners. This, in turn, creates a rare public space in a high-density village. Built with a new spatial structure, the public space is floating in the air and transform the private living space into a public space, making it possible to solve the problem of the lack of public space in the village creatively and demonstrate how the old buildings could be adapted to the new function.



Stepping Park House

Vo Trong Nghia Company Limited, Viet Nam
 Lead Designer(s): Vo Trong Nghia
Winner in Residential Architecture
 Description: The site is located in a new residential area of Ho Chi Minh City, with a park on its northern side. VTN Architects focused on designing a house which becomes an extension of its environment by integrating the green of the park into the interior space of the house. A large void was created by cutting the volume through the three floors, in the diagonal direction of the section. On the ground floor, the void serves as living room, open to the park; on the top floor as a green covered family room.



Oakland Museum of California

Mark Cavagnero Associates, United States
 Lead Designer(s): Mark Cavagnero
Winner in Restoration & Renovation
 Description: The Oakland Museum of California opened in 1969 with a backdrop of historic civil rights events. The brutalist landmark museum, designed by Kevin Roche, was entirely enclosed by concrete walls surrounding the 4-block site. The program for the recent renovation was to "break the box" establishing new connections between the museum and the surrounding neighborhood to promote more equitable access to one of Oakland's premier public spaces and outdoor art collections.



Nanchawan-Shiwu Tribe Homestay

CAALADI, China
 Lead Designer(s): Zhiyong Huang
Winner in Restoration & Renovation
 Description: The project is located in South Chawan Village, Yichang City. The village is surrounded by half-annular stone mountains and two crossed rivers. The ancients of village people lived here for centuries, which makes local people still kept the most traditional relations. The local traditional stone building technology achieved the original ecological way of life.
 The two houses used to belong to local brothers. The exterior part was crafted with stones.



Red Plum Culture and Creative Park

AAarchitects+IIA Atelier, China
 Lead Designer(s): Hiroshi Aoki, Yoshiko Sato
Winner in Restoration & Renovation
 Description: The project is part of the updates in the city. With the ongoing past 30 years development, those built factories and affiliates need to adapt to new productive relations. The 4 buildings in the Park are in different sizes and damage levels; architects bring new culture functions into the old buildings and re-open the park to public.
 The six-folding gable of #1 raw material warehouse represents the large storage capacity back in those years, which also represents great productive force.



The Church

SKOLNICK Architecture + Design Partnership, United States
 Lead Designer(s): Lee Skolnick
Winner in Restoration & Renovation
 Description: The Church is an adaptive reuse project that returns a once-shuttered 1836 Methodist Church back to the community as a vibrant arts center. The reimagined facility features an artists-in-residence program with accommodations, flexible studios, galleries, a resource library, and public garden. The building's exposed wood framing sets up a compelling dialogue between past and present, allowing for the sublime geometry of the original structure to emerge in dramatic relief.



House in Minohshinmachi

YASUYUKI KITAMURA, Japan
 Lead Designer(s): Yasuyuki Kitamura
Winner in Small Architecture / Residential Architecture
 Description: This is a private house for a young couple, located on the northern hill of Minoh city, within Osaka, Japan. Despite the fact that the area is fast developing and known for its rich natural environment, the houses have little to do with the local character. The project aims to highlight the relationship between humans and the nature, while acknowledging the natural qualities of the surroundings.
 The deep eaves of the light roof extend the interior, while the nested nooks and crannies create an ambiguous space.



Turn House

Rebecca Naughtin Architect, Australia
 Lead Designer(s): Rebecca Naughtin
Winner in Restoration & Renovation
 Description: This restrained extension maximizes the property's footprint by following a curve in the rear laneway and title boundary, whilst capturing northern light into the core living spaces. The curve is expressed architecturally and celebrated with a turn of black brickwork and playful ripple of extruded bricks. The facade is contrasted internally with an arc of white brickwork to reflect light within the space. The modest size of the home is complimented with a palette of quality finishes.



Majimaya Confectionery Tool Store

Kamitopen Co., Ltd., Japan
 Lead Designer(s): Masahiro Yoshida
Winner in Small Architecture
 Description: "Molds of happiness"
 About 170 specialty shops dealing with tableware, kitchen equipment, kitchen utensils, confectionery tools, food raw materials and packaging supplies are on the 800 meters arcade.
 In 1946, Majimaya confectionery tool shop was founded by the current Saburo Yoshida. They handle tools from all over the world as a specialty shop for confection.
 His molds were popular all over Japan and made the happiness of making sweets for many people.



85 Social Housing at Cornellà

Peris+Toral Arquitectes, Spain

Lead Designer(s): Marta Peris - José Toral
Winner in Social Housing

Description: The bases of this new residential building are a matrix of communicating rooms that eliminates corridors to guarantee optimum use of the floor plan; and the use of timber to improve the quality of construction and a major reduction of deadlines and CO2 emissions. The building is organized around a courtyard that articulates a sequence of intermediate spaces. There are 114 spaces per floor, all of similar dimensions. The inclusive open-plan kitchen is located in the central room, acting as an element of distribution, at the same time making domestic work visible and avoiding gender roles.

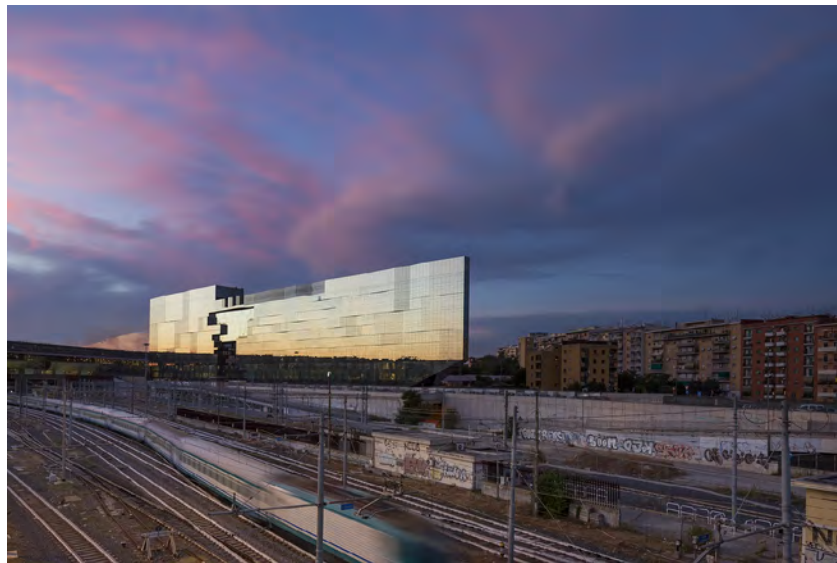


White Deer Plain. Tongchen Hotel

Huiyimingcheng, China

Lead Designer(s): Licheng Wu
Winner in Sustainable & Energy Saving Building / Hospitality Architecture

Description: The main building is demolished and only concrete frame structure is retained. Take advantage of the characteristics of the terrain and the falling height between the top layer of the main body and the ground to build a highly visual impact of the tin box dimension. To form strong contrast with the architecture framework, highlight the material application and dimensions of the building, changes of light and shadow, and also the rhythm of space level, as well as the scale change of the relationship between human and architecture.



The Sky of Rome

Atelier(s) Alfonso Femia, France

Lead Designer(s): Alfonso Femia
Winner in Sustainable & Energy Saving Building

Description: The new headquarters of BNL-BNP Paribas is part of a particular context consisting in a layering of infrastructures separated by two important urban areas including the station for high-speed rail leading to the role of an "urban place". The dialog between the building and the station was a priority. Our goal was to meet the functional needs with a building able to belong to the urban context of the station and to be representative of Rome and its users: a building in relation with the district Pietralata and the Tiburtina Station complex was born.

ECOLOGY OF KAZANKA

132 ha
 new protected areas

10 100 ton
 oxygen per year
 will be produced by new parks

22 735 ton
 carbon dioxide per year
 will be deposited by new parks

9 recommendations
 for waste and wastewater management,
 reduction of noise and light exposure

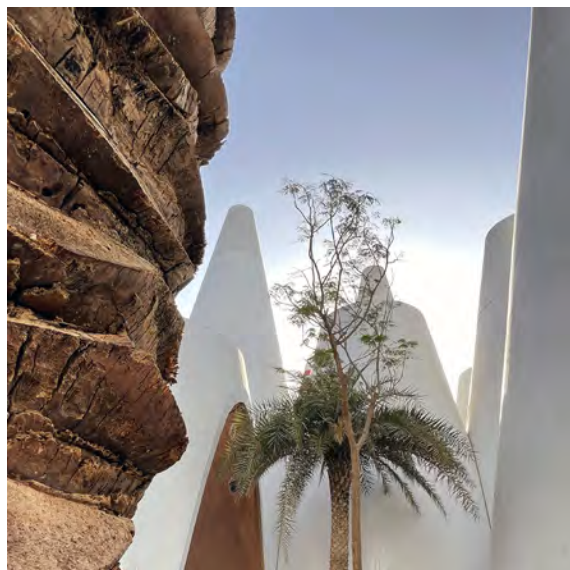
10 steps
 to improve and monitor water
 quality



Kazanka River Strategy

Orchestra design, Russian Federation
 Lead Designer(s): Edouard Moreau
Winner in Urban planning: large integrated projects

Description: Kazanka Strategy aims for the transformation along 22 km of river banks and 3,000 ha of territory in Tatarstan capital. The mission of the project is to create the largest continuous ecosystem of riverside parks in the country - a future economic and educational resource for the sustainable development of Kazan. According to the strategy, 12 new parks will appear around the Kazanka River which will be visited by 5,700,000 people annually. The Strategy has been developed for 2 years with the help of over 100 local experts, community leaders and associations.



Expo Austrian Pavilion

querkraft architects, Austria

Lead Designer(s): querkraft architects
Winner in Sustainable & Energy Saving Building

Description: „Connecting minds, Creating the Future“ - the slogan of the EXPO in Dubai. The Austrian pavilion offers space to enter into a multicultural dialogue on questions of a sustainable future. "Austria makes sense" is the slogan to present Austria in a sensual + sustainable way.

The pavilion designed by querkraft architects is inspired by historical wind towers and climate-regulating properties of Arab clay architecture. Re-interpreting these building traditions, 38 intersecting cones of different heights form the iconic shape of the Austrian EXPO pavilion.



Eleftheria Square

Zaha Hadid Architects, United Kingdom
 Lead Designer(s): Zaha Hadid Architects
Winner in Urban planning: large integrated projects

Description: The design of Eleftheria Square establishes new connections to reunite a divided capital. Nicosia's ancient Venetian fortifications encircle the city and separate the old centre from its modern districts, while the city's 'Green Line' divides the capital into two communities. Zaha Hadid Architects envisioned Eleftheria Square as the first part of a much larger urban planning vision that could be a catalyst for the reunification of the capital by opening the dry moat for public use to create an orbital park around the entire city.



New Guabuliga Market

University of Applied Arts Vienna, Austria
 Lead Designer(s): Foreign Affairs
Winner in Commercial Architecture / Small Architecture

Description: The New Guabuliga Market is a design and implementation project that has been growing from our engagement with the community of Guabuliga in northern Ghana since 2011. Based on field research conducted in markets throughout Ghana in 2018, the project team designed an iconic modular market structure that is aimed at attracting traders to the remote town and strengthening the socio-economic performance of the community. The design comprises a floorscape and roofscape that respond to programmatic, climatic, and urban parameters and includes an integrated water source, built furniture, flexible display options, and a market shop for locally made products that evokes the form of traditional grain silos in the region.



TRANSPLANT: Bio Shelters that Make Smile

Ecole Nationale Supérieure d'Architecture de Grenoble, France

Lead Designer(s): MEKEMTA Jodel Bismarc
Winner in Emergency and Temporary housing

Description: More than 5.6 million people have fled Syria since the war began in 2011, seeking safety in Lebanon, Turkey, Jordan and beyond (UNHCR, 2018). Turkey alone has received more than 3.6 million Syrians during this period. However, this situation leads to problems related to the sudden increase in population, creating growing tensions between Turks and Syrians. Thus the project called TRANSPLANT, integrates as an existing part of the Turkish culture by promoting the integration of Syrian refugees and their participation in the Turkish daily life.



The Pathways to Unknown

Applied Science University, Jordan
 Lead Designer(s): Mariam Abbadi
Winner in Heritage Architecture

Description: A story and mysterious elements, hidden messages, maybe evidence, or even direct information about a sacred place or a funeral memory, walk in dark corridors underground and at the end of the corridor there's light, see and feel like the author of the story wants without realizing, there are options but all options are leading to the same result. The transition from level to level, outside is inside, lower is like upper. Long underground corridor at the end there's glimmer.



SANDCRAPPER: Making Sandstorms a Lasting Treasure

Ecole Nationale Supérieure d'Architecture de Grenoble, France

Lead Designer(s): MEKEMTA Jodel Bismarc
Winner in Industrial Buildings

Description: SANDCRAPPER is an infrastructure of organic form inspired by the human lung. The project consists in purifying the air after a sand and dust storm. The objective is to produce clean air, to separate and valorize the particles suspended in the polluted air into materials via 3D printer, and to develop market gardening by the water resulting from the photocatalysis. In a context of accelerated population growth and global health crisis, this project provides a sustainable solution to the problems related to air pollution by sand and dust storms.



HAMBO. Bolonia's Multidimensional Habitation.

Pontificia Universidad Javeriana, Colombia

Lead Designer(s): Sergio Mutis

Winner in Sustainable & Energy Saving Building / Social Housing

Description: HAMBO is an experimental multidimensional project for socially vulnerable population located in Bogota, Colombia. Grounded on an in-depth 3-year participative study of the marginal neighborhoods of Bolonia, Usme, and on Complexity Theory, this project challenges Colombia's simple social-housing monetary-cap policies with an alternative sustainable complex strategy system. By fusing urban connectivity, architectural flexibility, collective management, urban productivity, participative design, and informal spatial attributes, HAMBO is able to conceive and fund an innovative, complete, mixed-use, transdisciplinary, and resilient housing solution for vulnerable population tailored-made to embroil within its territorial context and juncture.



Self-Supply Container Theme Resort Island

Tongji University, China

Lead Designer(s): Xucheng Feng

Winner in Sustainable & Energy Saving Building / Landscape Architecture

Description: The project site is located in a permanent undeveloped island in the southeast of Zhoushan Island. Although its size is only about 5 hectares, its surface is covered with dense natural vegetation and is close to the main island of Zhoushan City. It should be an ideal tourist destination. However, it has never been included in the planning by the government in history. With many years of design experience in mobile buildings, the project team is trying to quickly build a resort town on this island.

interior design



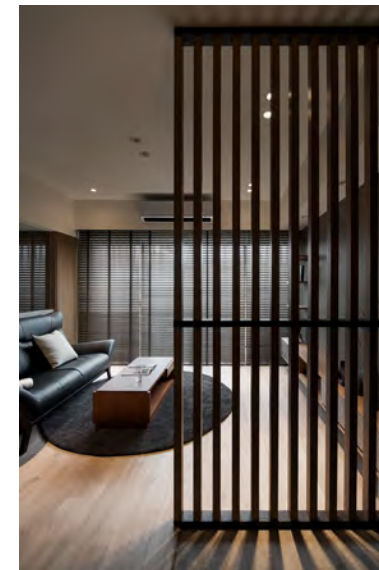
Austin Penthouse

Schoos Design, Inc., United States

Lead Designer(s): Thomas Schoos

Winner in Apartment Interior

Description: The client wanted his 34th floor penthouse to be a unique expression, filled with art and life. Our intention was to meld comfortable interiors with the sprawling views. As you enter, you're greeted by handmade "Bubble Lights" that give a cloud-like effect the living room. The kitchen to your right is handsome and clean with hidden drawers and popup appliances. You enter the master bedroom and discover two separate sitting areas, one designed for comfort and one to enjoy the view.



Between

Yuan Pu Interior Design, Taiwan

Lead Designer(s): Yen Ting Liu

Winner in Apartment Interior

Description: This apartment design illustrates the philosophy of living in combination of Zen and modernity. Through the presentation of materials, the structure of the layout and the natural light and shadow lines, the modern Zen aesthetic is expressed. The glass wall is used to separate the living room and study to increase the sense of space, and to extend the visualization of the space through the penetrating feature. The walls and furniture are made of moisture-resistant, easy-to-clean, and low-pollution system cabinets, and a large number of wood grilles are used to enrich the expression of the space with natural light and shadow.



Liang's Apartment

JDID INC., Taiwan

Lead Designer(s): JDY

Winner in Apartment Interior

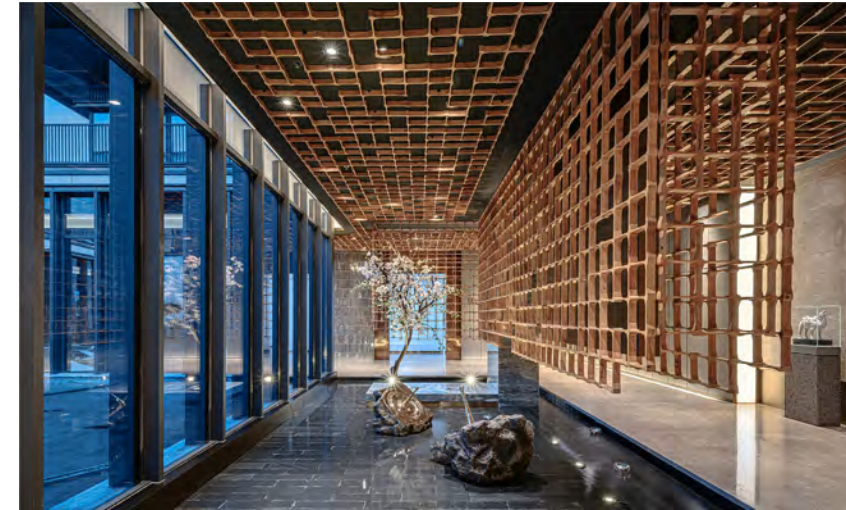
Description: In Japanese traditional space, there is a block called the "DOMA" (Lobby Stretched); similar to the modern architecture of the entry, it is of a larger scale. It is a space for cooking, gathering, playing, friendly exchanges with neighbors and all general purposes.

With the evolution of modern homes, the DOMA has disappeared and limited to what is now known as the foyer. The pattern of residential space gradually Westernized, but the way of life is still continuing the traditional spirit.



Wuhan Houguan Lake Sales Center

Chongqing Pichen Design Co Ltd, China
 Lead Designer(s): Yifei Pang
Winner in Commercial Interior Design
 Description: Light is the soul of space, and a building short of light is nothing but a prison. This project gains inspiration from the relationship of space, order, light and shadow. It stresses the interaction between light and space and, with tough lines of the space and simple color collocation, adds to the ingenuity of the space with light and shadow, and creates an architectural space tallying better with the natural ecology. In addition to endowing the space with more functions, it meets the aspirations of users for immersive experience, enabling them to feel the vitality of the space outlined by the designer.



Central Park

Kris Lin International Design, China
 Lead Designer(s): Kris Lin
Winner in Commercial Interior Design
 Description: In this project, a classical Chinese garden is created, which integrates the beautiful outdoor landscape into the interior, giving people an excellent view of the landscape. Harmony between nature and architecture? The project is located at Xi'an, next to Xi'an's largest urban ecological park, about 113.4 hectares, and has become a natural landscape resource for the project. The designers hope to use the "Central Park" as the theme, combined with the guest line, and use the "Introduction, elucidation, transition, and summary" design method to create a reception center with park experience.



Chez Shibata

Doyle Collection Co. Ltd., Japan
 Lead Designer(s): Aiji Inoue
Winner in Commercial Interior Design / Retail / Shops Interior Design
 Description: Patisserie "Chez Shibata" has been operating for 27 years in this location. This shop closed once, and it was newly built. When designing this shop, we focused on his "roots", "experience" and "future". Mr. Shibata has a twin brother and when still young, whenever he played outside alone, he was frequently asked where his twin brother was. He did not appreciate being asked like that nor being treated as a pair. Thus, seeking for having a unique sense became his core value.



SUNAC JiuLongTai Marketing Centre.AOYUAN

LIA INTERIOR DESIGN., China
 Lead Designer(s): Huan Yang
Winner in Commercial Interior Design
 Description: The design theme of the work is "In water clear the moon appears so night". The overall layout combines the meaning of Chinese gardens, with winding paths leading to seclusion. Along the moving line of "step by step, scene by scene", it shows the aestheticism of the poem "In water clear the moon appears so night". Through the moon, the work integrates the concept of time and the change of light and shadow, makes space more philosophical and natural in the presentation of beauty.



Crown Lobby – 5255 Yonge Street

Bartlett & Associates, Canada
 Lead Designer(s): Inger Bartlett
Winner in Commercial Interior Design
 Description: A dynamic art piece, an acoustic intervention, a space divider and an anchor for a reception desk: The bespoke screen that defines the Crown Lobby project is a striking architectural intervention.
 Tasked with bringing a dated Toronto office tower's public entryway in the 21st century, the design team devised the perforated metal panel to shift the axis of the space and emphasize its soaring 30-foot ceilings. Prior to the redesign, granite-clad bulkheads made the lobby feel dark and claustrophobic.



Flow

Kris Lin International Design, China
 Lead Designer(s): Kris Lin
Winner in Commercial Interior Design
 Description: The project is located in Chengdu. It is a development and exhibition area for the community. The community is focus on clean energy as its main industrial chain to create a smart city covering the new and clean generation of information technology. The designer takes the two elements of "water" and "light" as the themes, allowing nature and technology to collide to re-establish the emotional connection between man and nature. The light cube art installation in front of the entrance of the lobby hangs over the water.



CIFI · Fuyang Shuangqingjianglai Sales Center

SUNS DESIGN, China

Lead Designer(s): Qiang Liu

Winner in Commercial Interior Design

Description: The construction and development of cities has slowly changed the way people get along. The neighbourhood relationship that used to help each other has gradually become as it is now and no longer overlaps. As a result, urban communities have also entered a state of indifference and "sub-health". Nowadays, under the high-speed real estate development model, the humanistic value of the community becomes more and more valuable. CIFI Real Estate adheres to the mission of "building a better life with heart" and launches two series of themed life pavilions: the Smile Life Museum and the Smile Art Museum.



CO00

Arshia Architects, United States

Lead Designer(s): Arshia Mahmoodi

Winner in Commercial Interior Design

Description: The balance between utility and beauty is the driving factor behind this project. To create a streamlined yet expansive healing space, the concept incorporates psychological care for the patients and relieves any anxiety that is associated with a typical surgical facility through a carefully designed interior environment.

An urban design approach at a much smaller scale was employed in this project. The Clinic Promenade was remodeled and re-examined for its importance as a counterpoint to the substantial offices.



Horumon cooking Ryu

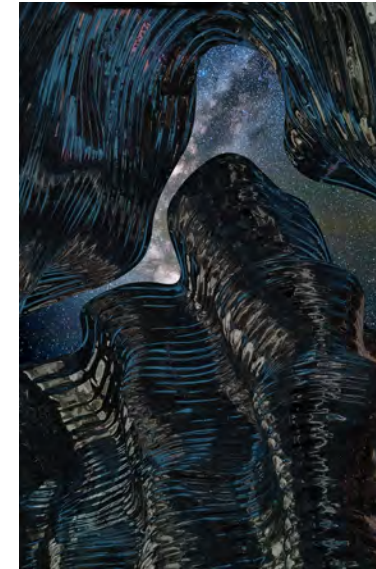
Kamitopen Co., Ltd., Japan

Lead Designer(s): Masahiro Yoshida

Winner in Commercial Interior Design

Description: "discarded things" 'Ryu', which has been open in Sapporo, is a 'hormone' restaurant that specializes in Japanese-style offal meat cuisine. There is a popular belief that the etymology of 'hormone' cuisine comes from the word "ho-ru-mom" that can be interpreted as 'discarded things' and in this context as 'discarded meat'.

Therefore, we considered whether it would be possible to create a new design by using the interior materials which were originally disposed of.



Naturalism Creates a Magic Wonderland

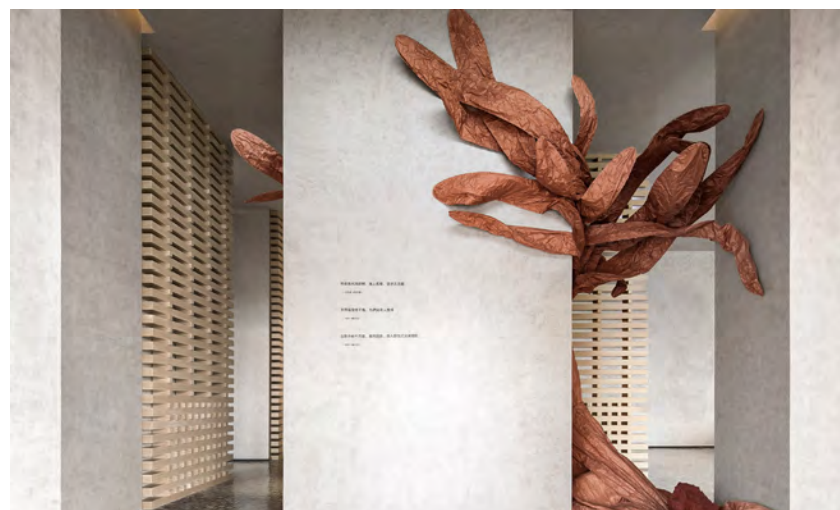
FOSHAN TOPWAY DESIGN, China

Lead Designer(s): Zhike Wang & Xiaoshui Li

Winner in Exhibition / Gallery Design

Description: Naturalism Creates a Magic Wonderland

We approached the spatial narrative in such a manner with a view to paying tribute to nature and creating immersive experiences. Metal is extracted from ore and can be used to make iron, bronze ware and other products. We hoped to return metal to its original state and simplicity of nature. The walls on both sides of the "canyon" meander with unconstrained curves, and the trenches on the walls are stacked layer upon layer as if they've been weathered for thousands of years.



Longwan Three Realms Sales Center

7 POINTS DESIGN, China

Lead Designer(s): Alan Wong, Yi Leung

Winner in Commercial Interior Design

Description: "Emotion" may be a somewhat vague term, but for designers who want to connect people with time and space, the emotions in the space are not vague. If you want to clarify the original intention of this project, the designer is more inclined to try to interpret the perceptual design experience driven by humanity, art and emotion through the opportunity of an appropriately sized project. Installation art works are one of the important means of emotional expression.



BE29

Arshia Architects, United States

Lead Designer(s): Arshia Mahmoodi

Winner in Exhibition / Gallery Design

Description: Gallery 19C is a portfolio of rare impressionist artwork from the turn of the 19th Century. True to radical departure in impressionist art and borrowed from the bedroom in "2001: A Space Odyssey", the project endures to create a stark and minimal aesthetic by delivering an environment that is materially incorporeal. The Future Garment will serve as a garment for cloaking the space or a "tablecloth" providing backdrop for the subject of the art, a technique mastered by the bravado of Impressionism Paul Cézanne.



Bridgestone Innovation Gallery

MOMENT, Japan
 Lead Designer(s): Tomohiro Watabe
Winner in Exhibition / Gallery Design
 Description: We aimed to create a facility where even children can learn about Bridgestone's new innovations through hands-on experiences, in an easy-to-understand manner, based on a solution that everyone knows: tires. Through four different zones, visitors can learn about Bridgestone's history, fascinating products, and the latest technology. In the "1. WHO WE ARE" zone, visitors can learn about Bridgestone's history by following the red line that runs through the space.



River Palace

Kris Lin International Design, China
 Lead Designer(s): Kris Lin
Winner in Hospitality: Bar and Restaurant
 Description: River Palace, overlooking south to the confluence of the four rivers. As it faces the vast hinterland of the Guangdong-Hong Kong-Macao Greater Bay Area, combining with its historical background, the key words "set sail" came to designer's mind; therefore, "yacht" is applied as the design language in the project architecture to illustrate the understanding of "urban characteristics" and "environmental characteristics". It has become a new urban gathering spot and offered a natural emotional experience field to the Pearl River coast.



Rosina

KTGY Simeone Deary Design Group, Under a Consulting Agreement with Gensler, United States
 Lead Designer(s): Lisa Simeone
Winner in Hospitality: Bar and Restaurant
 Description: Glamorous and glowing like a faceted jewel box, this high-concept cocktail bar draws inspiration from a fictional namesake equal parts charming and seductive. The team constructed a full dossier for their muse, assigning attributes and weaving a complete life story. From her favorite color and love of haute couture to her beloved champagne cocktail and affinity for exceptionally luxe materiality, their prohibition-era Sicilian socialite with a penchant for living the good life embedded herself throughout the space.



Teller

Ewert Leaf, Australia
 Lead Designer(s): Ana Calic
Winner in Hospitality: Bar and Restaurant
 Description: Once the former "State Savings Bank of Victoria" established in the early 1900's, 81 Lygon St. has taken on many unique identities, most recently as Teller, the local's restaurant.
 The brief called to create a venue that celebrated the existing fabric of this heritage listed building unique to Lygon St, whilst also injecting new life through an approachable hospitality venue that locals and visitors alike could call an extension of their home.



Hong Japanese Cuisine

Huiyimingcheng, China
 Lead Designer(s): Licheng Wu
Winner in Hospitality: Bar and Restaurant
 Description: The old brick and wood structure warehouse is transformed into "Hong" Japanese style cuisine, which retains its original roof structure, and the whole building is restoring the old as before. The unique traditional Japanese style is built in the interior, the modern material context is skillfully used to enhance the spatial experience, the light effect and the sense of rhythm are used to create the spatial atmosphere, embody the traditional humanistic feelings and seek the contemporary spiritual value, and create a unique poetic landscape space.



8 Street Brickell

Bigtime Design Studios, United States
 Lead Designer(s): Callin Fortis
Winner in Hospitality: Bar and Restaurant
 Description: The design story began with the classic Hotel Bar experience and why travelers and locals alike feel at home in any city and in any country. There is an allure in Boutique Hotels, that if executed well, feel both decidedly local and inclusive. A new meaning to see and be seen.
 Miami is that good city, and that indefinable essence is what we strive to capture for both local and out-of-town guests alike. Though our space in square footage is small, the soaring ceiling was the singular raw attribute that became the over-scale feature that provided not just visual energy, but a scale that helped create a much more intimate experience while keeping the over scale ceilings intact and somewhat of a mystery.



La Cage Noire

Minas Kosmidis Architects, Greece
 Lead Designer(s): Minas Kosmidis
Winner in Hospitality: Bar and Restaurant
 Description: The architectural office Minas Kosmidis Architects designed "La Cage Noire" in Komotini, a nightclub for all seasons. The design of the building is demarcated from the rectangular floor plan resulting in a monolithic volume with strong symbolism. The name of the club, 'the black cage', was the initial inspiration for the design and directed the central idea. The next move for the 'cage' narrative is the release of wildness; this sense is depicted through the portraits of wildlife dominating the space.



Ettan

Schoos Design, Inc., United States
 Lead Designer(s): Thomas Schoos
Winner in Hospitality: Bar and Restaurant
 Description: The intention was to design a restaurant that was upscale, yet comfortable enough for people to visit multiple times a month. Our approach was to evoke the senses through color, texture and pattern, while staying true to the deep-rooted heritage found in Indian culture. The indigo colors and textures hint to how the original textiles were dyed and processed generations ago. Combining these elements, along with more refined details, created a truly sophisticated yet welcoming space.



TRUNK(HOUSE)

Tripster Inc., Japan
 Lead Designer(s): Tripster Inc.
Winner in Hospitality: Hotel and Resort
 Description: TRUNK(HOUSE) is the second hospitality concept of TRUNK in Tokyo, opened in August 2019 in the picturesque district of Kagurazaka. The ambition was to revive the spirit of Yamaji, a former Geisha training house and ryotei (traditional Japanese gastronomic restaurant), by turning the place into a unique town house style hotel. The design team took the decision to preserve the facade of the 70-year-old two-story building, to transmit to all the visitors, the heritage of this former Geisha and refined entertainment district.



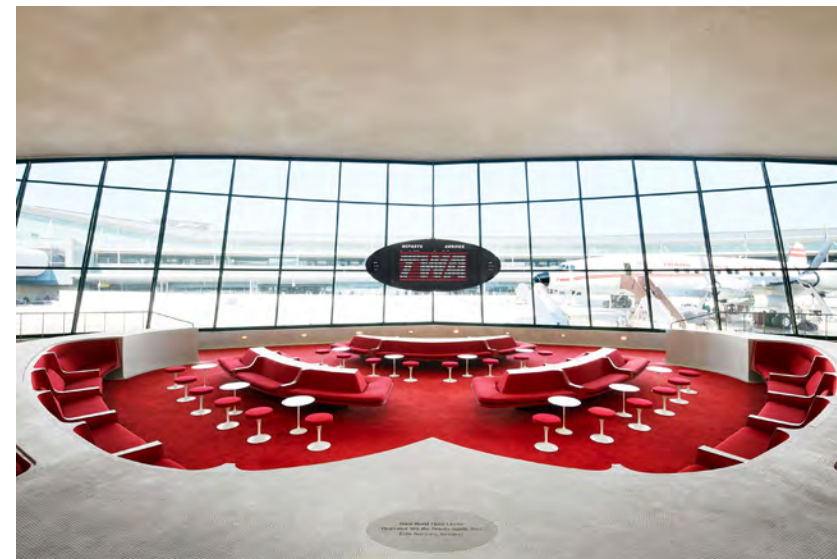
TRUNK(HOTEL)

Jamo Associates/TRUNK ATELIER, Japan
 Lead Designer(s): Norito Takahashi
Winner in Hospitality: Hotel and Resort
 Description: TRUNK(HOTEL) opened in May 2017 in the heart of Tokyo, Shibuya, under the unique concept of "Socializing" which aspires to democratize the notion of "social responsibility", by offering through hospitality, various opportunities to contribute to a life-sized social purpose. We focus on 5 pillars that embody the notion of Socializing: Environment, Local first, Diversity, Health and Culture. Each of these values are highly valued in the design and creation process of each detail of the interior, objects, services and products of the 15 rooms property.



Arizona Biltmore a Waldorf Astoria Resort

Virserius Studio, United States
 Lead Designer(s): Therese Virserius
Winner in Hospitality: Hotel and Resort
 Description: Virserius Studio's charge was to reimagine and reposition the historic Arizona Biltmore - A Waldorf Astoria resort. Many of the original elements of the Biltmore had been modified or eliminated through the years. This major scale, \$70 million project began with a new master plan for the resort. This led to the creation of the new adult pool, Saguaro named after the 70' Saguaro cactus that was sourced and placed at the head of the pool. The Spire Bar and Lawn event space as well as the reimagining of the Wright's Bar and the individual guest cottages.



TWA Hotel

Stonehill Taylor, United States
 Lead Designer(s): Sara Duffy - Principal, Interiors Division
Winner in Hospitality: Hotel and Resort
 Description: Originally designed by world-renowned architect Eero Saarinen and opened in 1962, the TWA Flight Center was built for Trans World Airlines by Howard Hughes, epitomizing the glamour and optimism of the Jet Age. Designated a New York City landmark in 1994, the treasured 216,000-square-foot terminal has been reborn as the TWA Hotel in May 2019, referencing Saarinen's work with contemporary design adopted for the modern traveler. Stonehill Taylor, the interior designers for the hotel's 512 guest rooms, Sunken Lounge, and other public spaces, restored the excitement for air travel by maximizing comfort.



Milina

BRITTO CHARETTE, United States

Lead Designer(s): Jay Britto and David Charette
Winner in Houses Interior

Description: Milina is 7,454 sqft new-construction waterfront residence in the Hamptons. Britto Charette designed every inch of the spacious interiors, including 7 beds/7 baths, & also furnished the ample exterior living spaces. Our design features a fun & unique guest bedroom (deep blue palette, plush velvets, & decorative wall details that create a deviation from the language of the design found throughout the rest of the residence), a bunk room to accommodate family & friends, a wine cellar, home theater (including daybeds & seats that can hold 10 people), a pool & ample outdoor living space.



The Tension of Form and Space

Hangzhou SATYOO Culture and Creativity Co.,Ltd, China

Lead Designer(s): Xiaozhe Pan

Winner in Institutional Interior Design

Description: Because of the natural difference between physical form of space and human feelings, tension is generated, which is based on the conscious perception of the expansion of physical space.



Forest Hill Residence

Cecconi Simone Inc., Canada

Lead Designer(s): Elaine Cecconi

Winner in Houses Interior

Description: The requirement for large versus intimate gatherings influenced the planning and use of space for this custom designed 5,700 sf home. The interior designers and architects worked concurrently to ensure the architectural envelop meshed with the interiors; integration is seamless. Private zones are located at the back of the home with direct connection to the pool, dining/lounge areas. Clean simple lines, classic materials and a warm palette mesh to create a highly livable home.



St. Clarens

Cecconi Simone Inc., Canada

Lead Designer(s): Elaine Cecconi / Anna Simone

Winner in New Concepts

Description: The site is in an area that is historically single-family lots. Conventional wisdom would be to divide the 29' wide x 130' lot to create a pair of semi-detached homes, however the inside would only be 12' wide; or, to build a duplex, families are living above others. The designers came up with another concept that pushes the boundaries of zoning by-laws and soft densification, in an intelligent and thoughtful way. For St. Clarens, there are two attached units but they're situated front to back.



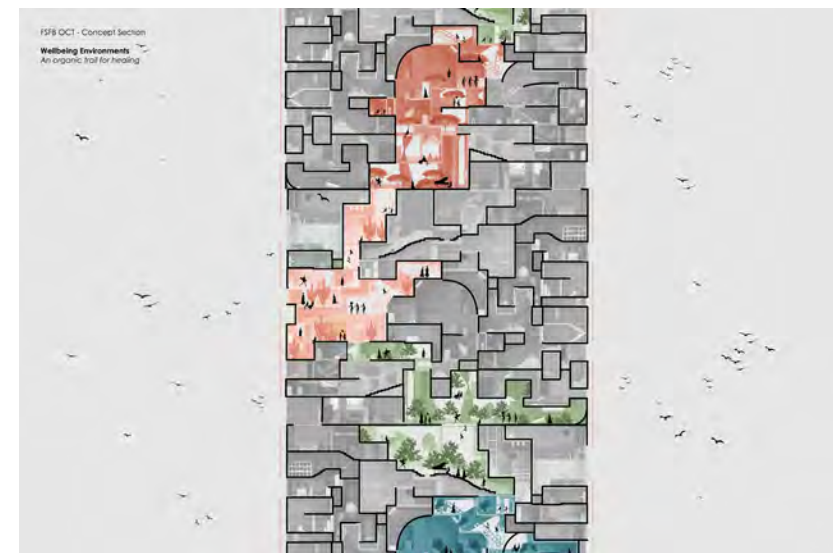
Mont-Royal Residence

MU Architecture, Canada

Lead Designer(s): Charles Côté

Winner in Houses Interior

Description: A Great Montrealer. Originally designed by Architect Pierre Cantin in 1964, the house was completely renovated to give it a new elegance. Redesigned for a young family, this vast residence of nearly 10,000 sq. Ft. Now offers an open concept, room for lighter, larger and brighter spaces. A majestic Atrium
 The atrium, a true centerpiece, unveils a double staircase adorned with extensive walnut paneling leading to the mezzanine and overlooks a bar area with a fireplace adjoining the living room.



Fundación Santa Fe - Outpatient Care Tower

AEI Spaces, Colombia

Lead Designer(s): Marta Gallo, Alejandra Arce.

Winner in New Concepts

Description: About the Design: Fundación Santa Fe Outpatient Care Tower is located across a semi-pedestrianized street from the hospital's iconic brick plaza and gardens. A receiving courtyard and an array of green stairways interconnect the public spaces of the tower in an ascending interior pedestrian spiral that elevates throughout the 10-story building. Drawing from a year-long in-depth local research, and scientific evidenced-based design studies, different health-promoting spatial attributes were merged into unique healing atmospheres tailored-made for each medical specialty level.



Time Poem of Symbiotic Art Villa

Shanghai Haodi Interior Design Office, China
 Lead Designer(s): Haochen Su
Winner in New Concepts
 Description: The protagonists of contemporary cities often regard home as a place of equal importance to both spirit and material. The reason why they obtain abundant internal energy of self-restraint.

Designers integrate the artistic style of magic capital into space, modern architecture and nature, without losing artistic style. The artistic conception of "eliminating complexity and preserving simplicity" and "combining virtual and real" breeds quality cultivation and connotation suitable for contemporary living environment.



Visitor Centre Schaffhausen

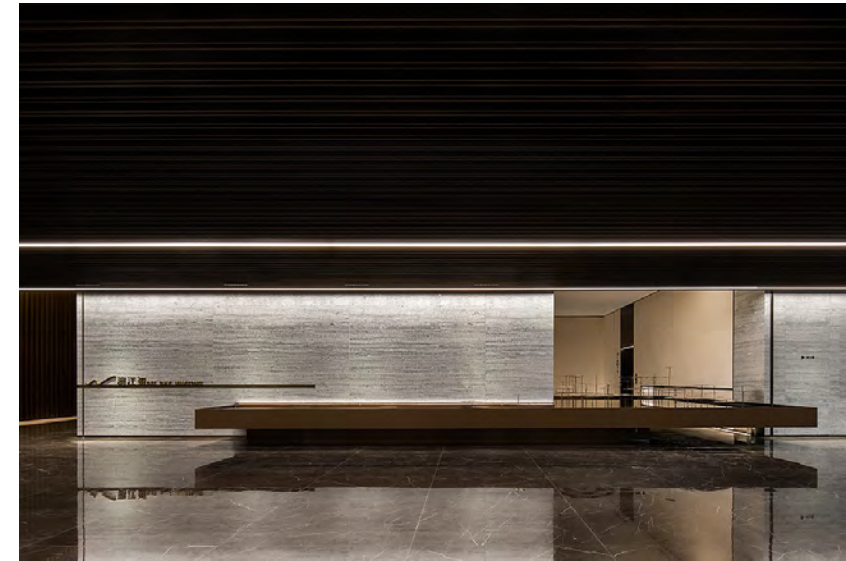
Dost Architektur GmbH, Switzerland
 Lead Designer(s): Carlos Linder
Winner in New Concepts / Public Building Interior Design

Description: A revelation connects the previously separate areas of the town hall. The gallery and rooms of the State Archives were removed, the separation was reduced to one continuous layer, connected by two entrances and a panorama window. Two asymmetrical fixtures made of glass and metal were placed in the high-ceiled multifunctional area. The two elements, equipped as meeting rooms in the upper area, divide the space and its uses through their



River Mansion No.1 Sales Center

Lonson Design, China
 Lead Designer(s): Yuan Jing, Zhong Jianfu, Ren Zhuo, He Wenfeng
Winner in Other Interior Designs
 Description: Based on the characteristics of the city and the era, the designers continued the simplistic, lively design languages that feature the residential building and used modern but dignified materials such as natural stones, stainless steel, wood veneer and perforated plates to create a trendy, powerful and solid sales center, while also incorporating the antique copper into space and subtly extending the logo elements of the River Mansion No.1, thus creating a fashionable but dignified modern urban space that inherits the cultural heritages.



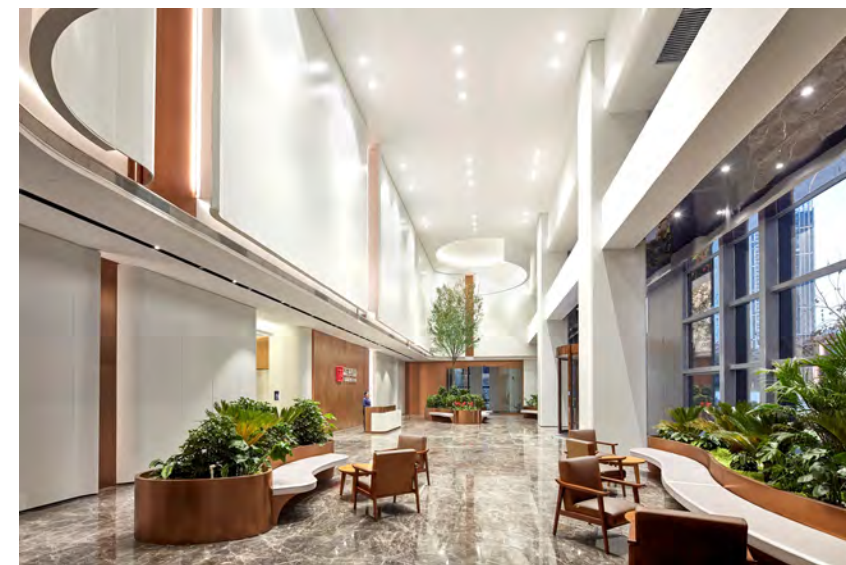
INT BAY Nantong

G-Art Architecture and Interio, China
 Lead Designer(s): Jun Mao
Winner in Other Interior Designs
 Description: This project aims to create a high-end community-type comprehensive club for the riverside area of Nantong, and form a complete business circle to improve the quality of life in the region.
 The whole underground interior space also brought a lot of problems to the design. In order to achieve the effect of high-end club in the damp and cold basement, the design team constantly thought about the relevance and sensory experience between each space. The entrance area of the club creates the grand welcoming scene of a luxury hotel, and the wall with a sense of ceremony reveals the super high level courtesy to the distinguished guests.



House in a House

Soho Interior Design Co. Ltd, Taiwan
 Lead Designer(s): CHIEN I CHEN
Winner in Other Interior Designs
 Description: House in a House
 The medical space not only focuses on functions, but can be transformed into a structure that can be savored attentively with its artistic meaning and a cultural field of aesthetic taste.
 The good conditions of the height of the field, with the concept of "House in a House" accompanied by the form of "island", reveal each independent unit. Through the series of light, it allows all units to be easily seen in sight. The waiting chair is a concept of a series of islands, which avoids the embarrassment of looking at each other and achieves the goal of epidemic prevention in the post-epidemic period.



Lixia Office Culture Center

Vantree, China
 Lead Designer(s): Muchuan Xu, Minxi Cai, Xin Yan, Jingyi Zhao
Winner in Public Building Interior Design
 Description: Area: 50000 square meters
 The purpose of the design of Lixia Office Culture Center is to create a new landmark office space for the Lixia Holding Group.
 The project caters to the needs of workers in modern state-owned enterprises. By using of wood, plants and other ecological materials, it creates an open, warm, humanized and international indoor, and designs a large number of "community" spaces far beyond the traditional office, creating a delicate and comfortable working environment.



Bamboo Book House

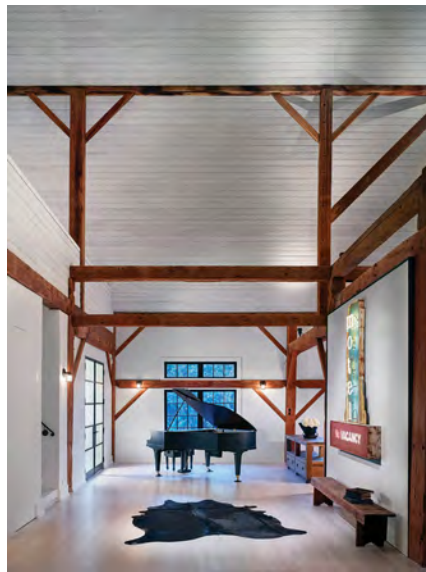
Yung Design Group, Taiwan

Lead Designer(s): Chuang che yung

Winner in Public Building Interior Design

Description: This project starts from a house made of iron sheet located in the corner of an old community. We kept the original structure of the house, rearrange the space layout, and renew the façade to turn this space into a real estate sales center. After learning the cultural background of the client, we proposed the community library concept with humbleness, acceptance, and the fusion of its surrounding environment as its key characteristics.

The atrium which allows for natural light to penetrate and flow throughout the rest of the space.



The Red Barn

Cecconi Simone Inc., Canada

Lead Designer(s): Elaine Cecconi / Anna Simone

Winner in Renovation Interior Design

Description: This 2.3-acre property includes a 725sm barn from the early 1800s. After many years of disuse, the property and barn were derelict. The brief was to restore the barn and convert it to residential usage while maintaining the authenticity and character. For heritage purposes and modernization, every aspect of the property was restored. While the interiors are not considered heritage, it was important to restore and enhance the features, creating continuity from the exterior to the interior while adapting to its new purpose.



801 Hope lobby

HansonLA, United States

Lead Designer(s): Gisela Salazar

Winner in Renovation Interior Design

Description: Hanson LA crafted a new lobby for 801 Hope Street in downtown Los Angeles through a series of strategic moves to improve circulation, increase functionality, and elevate the experience for the existing and future tenants of the residential building. A series of curvilinear walls connect the three primary points of circulation—the street entrance, the porte-cochère, and the elevators—as they define the center of the space with a reception desk.



E CARPARK

Oft Interiors Ltd., Hong Kong

Lead Designer(s): Cm Jao & Ken Cheung

Winner in Renovation Interior Design

Description: This is a garage designed for sports car enthusiasts, not so much a garage as a private sports car museum. For enthusiasts, sports cars are not only a means of transportation and artwork but also represent the freedom and adventure within, and what this garage shows and emphasizes is the freedom of mobility brought by cars.

How to make the dark closed garage into a futuristic sports car museum?

OFT to "technology - flow - freedom - future" four key words for the concept, through the ground and ceiling through a large number of straight lines and curves, simulating the vehicle on the road speeding state, the car driving dynamics have been continued in this flowing space, symbolizing the never-ending adventure, this is not the end but the starting point.



Detroit Foundation Hotel

KTGY Simeone Deary Design Group, United States

Lead Designer(s): Gina Deary

Winner in Renovation Interior Design

Description: Reimagining a former fire department headquarters as a boutique hotel was more than a renovation or historic preservation project – it was an opportunity to revitalize a city.

Entering the five-story Neoclassical building through a massive, arched portal, guests are transported into a story-and-a-half space that once housed fire engines. Existing glazed-brick tiles celebrate the building's history while new finishes and lighting add modernity.



Yours Truly DC

KTGY Simeone Deary Design Group, United States

Lead Designer(s): Lisa Simeone

Winner in Renovation Interior Design

Description: Tasked with renovating the interiors and visual identity of this boutique hotel, designers envisioned an inviting yet unexpected environment for locals and visitors to gather. Design decisions were guided by five brand pillars defined early in the conceptual phase – the design was to be INVITING, the people were to be INTUITIVE, the hospitality was to feel GROUNDED, the art was to be ECLECTIC, and the programming was to feel SERENDIPITOUS. Taking up residence in a brutalist structure, this "communal living room" first and hotel second makes a point of welcoming the neighborhood into its whimsically provocative environment.



Nantong Binjiang Seal

Vanpin Architectural Design, China

Lead Designer(s): Emma

Winner in Residential Interior

Description: This Project is close to river, so designer drew unique inspiration from the surging river, taking the artistic space as the canvas to paint the humanistic phenomenon that has become a trend, forming the "web celebrity" without losing the high-level implicit lines. When the design is looking for the uniqueness of the project in Nantong City, it happens to think of how to create a "network celebrity club", and strive to drive the overall development of the Nantong Riverside district.



Shenzhen Anhongji TIANYAO

Shenzhen Erdong Erju Design, China

Lead Designer(s): Chen Limin

Winner in Residential Interior

Description: Time is quiet and beautiful, years pass by. The beauty of wabi-sabi style changes in light and shadow. The warmth gradually melts my heart. Be quiet for a while and become comfortable Wood color changes Dance with light, smile to life. Gray background with sofa

It is also gentle with the wood color. Bright and fresh. The kitchen exudes a relaxed atmosphere. Quaint furniture texture. Retro artistic presentation. Wall pattern closer to life. Not simple design method No loneliness, no expectations.



Annex Residence

Cecconi Simone Inc., Canada

Lead Designer(s): Anna Simone

Winner in Residential Interior

Description: With limited windows, the design challenge in this 3,000-square-foot boutique condo suite was to integrate light throughout, while making the terrace feel like a natural extension of the inside space. It would also need to showcase the homeowners' eclectic art collection and accommodate their love of entertaining. To accomplish that, the designers created an open, gallery-like space featuring clean sightlines, sleek but sculptural light fixtures and an uncluttered, minimalistic design that brings the outside in while keeping attention on the focal point artwork.



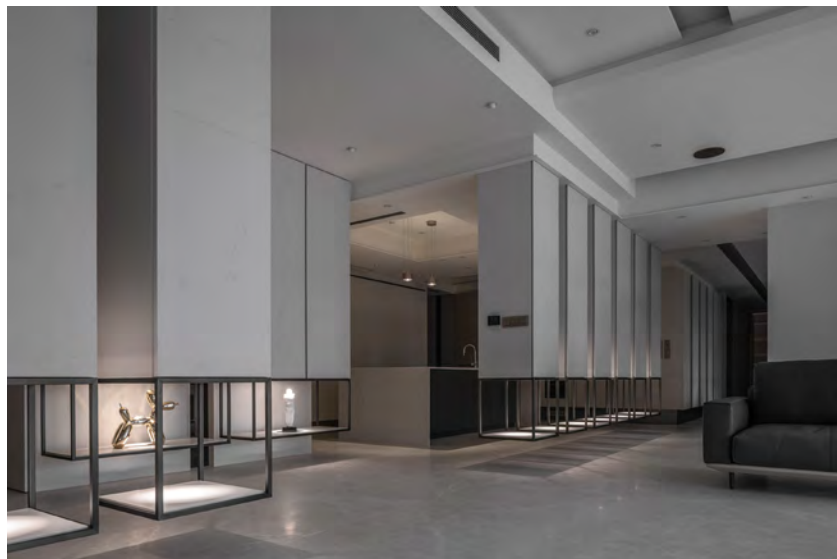
Bucareste

Fernanda Marques Architects, Brazil

Lead Designer(s): Fernanda Marques

Winner in Residential Interior

Description: It is an ideal home: spacious, bright, comfortable and, above all, practical. Suitable both for receiving friends and for enjoying the intimacy of family life. This would be a summary of the essence of this project made up of contemporary lines, with about 750m2, tailored to meet the daily lives of a couple of entrepreneurs and their two children. There are practically no partitions, all thanks to a glass panel seated on a very thin frame, which covers almost all the facades and is independent of the structure.



The Floating Corridor

Soho Interior Design Co. Ltd, Taiwan

Lead Designer(s): CHIEN I CHEN

Winner in Residential Interior

Description: In order to emphasize the layout of high-performance storage capacity, an attempt was made to form a floating array of colonnades for the storage cabinets. The main reason is that the space is on a low floor, and the angle of sunlight entering the house is quite small.

The gaps of the array colonnades do not hinder the penetration of light, and the light from the sunlight reflected by the floor extends on the ground without obstruction, forming a gradual light fade.



The House of Hygge

Dsod Interior, Singapore

Lead Designer(s): Don Lin

Winner in Residential Interior

Description: Let's just not talk about concept or theme and restored back to the fundamental of living.

"Hygge", is one simple word that truly reflects the owners of this apartment.

"Hygge", is the pursuit of happiness and art of living with the quality of cosiness and by using simplicity to influence the principle of lifestyle. Upon you enter, the openness layout serves as a portal to connect all spaces together. This frameworks is a reverse concept which turns theme into handcraft, space into material and lights into environment.



The Lakeville Regency Private Residence

ISSI DESIGN LTD., China
 Lead Designer(s): Andy Leung
Winner in Residential Interior
 Description: Shanghai is a place where Eastern and Western cultures converge. This project is located in the center of Shanghai. The interior space is designed in a colonial style. The colors are contrasted with black and white. The materials, such as terrazzo cut into small bricks, woven texture paper, and shutters with Far Eastern architectural style, all show a strong oriental flavor and colonialism. Besides, the overall space is modern and minimalist. The minimalist islands and hanging fireplaces in the living room not only show the philosophy of the 'Zen', but also show the sophisticated and elegant side of owner.



Alchemy

Studio Paolo Ferrari, Canada
 Lead Designer(s): Studio Paolo Ferrari
Winner in Retails / Shops Interior Design
 Description: The design intent was to reject staid cannabis clichés and deliver a cerebral experience infused with artistry, nature, and technology.

Not dissimilar to this alchemic transformation, the flagship melds high-tech ingenuity with natural materials. The apothecary-like space lands somewhere between a laboratory and a temple. It is a serene environment with energetic bursts. The store was designed around how customers move through and shop the space.



Fuyang TOD Town Sales Center

G-Art Architecture and Interior, China
 Lead Designer(s): Zhi Lai, Lufen Ding
Winner in Retails / Shops Interior Design
 Description: In this project, we hope to build a secret and secluded city in the city. Through unconventional spatial expression, light and shadow changes, and material contrast full of natural charm, a natural space beyond the world is created. The water symbolizes the Fuchun River, as a medium between outdoor and indoor, and a calm water surface is the only way to the secret world. The overall space is formed by intersecting multiple intersecting caverns, allowing the spatial sense of the cave secrets to be fully implemented in the entire spatial logic.



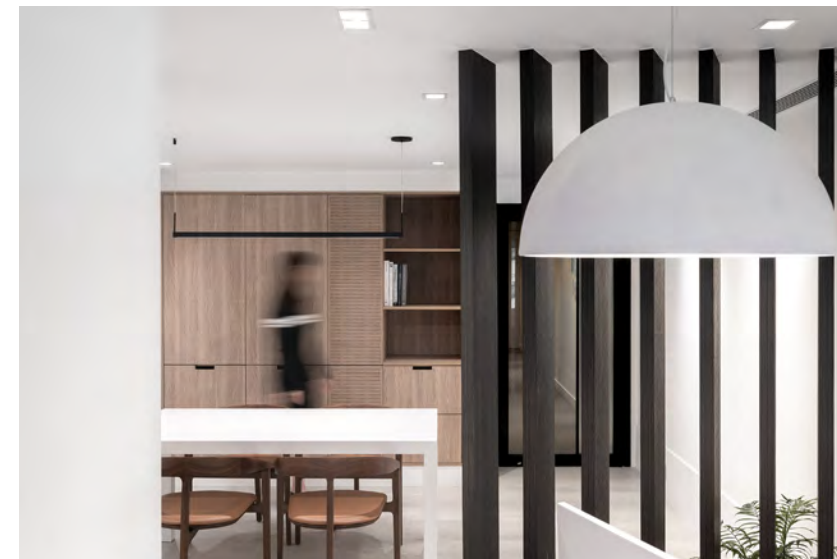
One Third Yoga Yoga Art Center

Boundary Space Design, China
 Lead Designer(s): Tom Huang
Winner in SPA / Fitness / Wellness Interior Design
 Description: The project intends to reflect fully on unique conditions of the site, and follow and borrow its original advantages, so as to make the space natural and loose on the basis of satisfying its functions, and manifest the quality and spiritual texture of the space more deeply. It provides yoga practitioners a space to pay attention to themselves and caters for various forms of practice, enabling them to feel, understand and find themselves through physical practice.



Presentedby x Level Shoes

External Reference, Spain
 Lead Designer(s): Carmelo Zappulla
Winner in Retails / Shops Interior Design
 Description: The Presentedby store is conceived as an interactive exhibition space where digital dimension informs the physical and vice versa. Even before going in, the customer is captured by a double funnel-shaped entrance covered with screens that uses outstanding projections images starting right away the fully immersive experience. Presentedby features interactive and dynamic projections on the floor, being sensible to foot traffic and making the space more playful.



Office of Blocks

Adrian Chan Design & Research, Hong Kong
 Lead Designer(s): Adrian Chan
Winner in Workplace / Office Interior Design
 Description: Exploring how a confined space expands to accommodate the temporary and the permanent, and the communal and the private, formed the brief for this project. The client, an HR firm in Hong Kong, needed their tiny office renovated to be spatially efficient, aesthetically curious and human-centric, in a city whose captivating skyline is only outdone by its sky-high real estate prices. Such space needed to flex with diverse occupancies (4 -18) despite a tight enclosure (41 sq m) and low ceilings (7'4").



Aon Hong Kong Office

Spatial Concept Limited, Hong Kong

Lead Designer(s): Gary Lai, Ariel Wong

Winner in Workplace / Office Interior Design

Description: One key initiative of the Aon project was to transform their traditional office into an innovative and fully agile workspace, a next-generation workplace experience with four pillars in mind: 'Unify, Optimize, Modernize, and Wellness.'

Inspired by the natural surroundings, we interpreted the Aon brand through the kaleidoscope of nature. Staff well-being is the anchor point from which we expanded. Aesthetically, we bring a unique user experience through a biophilic narrative design journey, creating a unified design for the entire project.



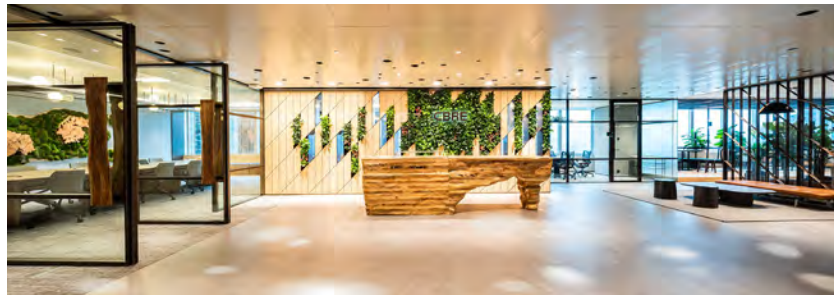
Work+

SnapCab, United States

Lead Designer(s): Glenn Bostock

Winner in Workplace / Office Interior Design

Description: The SnapCab Work+ is a spacious, isolated workspace created to help people safely return to work during the pandemic. With its many customizable design options, this rolling mobile pod offers a flexible privacy solution for a variety of environments including open offices, home studios, and coworking spaces. The transparent glass door gives users a sense of community while providing the comfort of remaining socially distanced. Upgrade your panels with synthetic felt for an enhanced acoustic experience, or with Corning® Gorilla® Glass for a beautiful whiteboard surface.



CBRE Hong Kong offices

Spatial Concept Limited, Hong Kong

Lead Designer(s): Gary Lai, Vic Lau

Winner in Workplace / Office Interior Design

Description: CBRE's two offices in Hong Kong exemplify our "City and Parks" concept. Design elements are derived from the contrast between Hong Kong's skyscrapers with its country parks, nature reserves, and urban gardens.

The concept was to weave the "City & Parks" together in two sections: communal areas are identified as parks, whereas workspace, utility, and locker areas are marked as the city. Contrasting with the organic and more natural forms in the park zones, the work area is structured with a more gridded design to represent Hong Kong buildings and roads.



Mo Box

Zhejiang Qingmo Engineering Survey & Design Co., Ltd, China

Lead Designer(s): Yu Gang

Winner in Workplace / Office Interior Design

Description: In the face of team expansion and the urgent need for office space optimization, the new office area designed for QINGMO DESIGN has created a new design context - more Oriental, more warmer.

A white "Mo Box" is placed in the core of the space. The "box" is fully opened and flattened to form six areas without too many partition walls. The six sides of "box" are built into a core public area closely related to everyone's daily life. These public areas are placed into the spatial layout logic of traditional dwellings to form a "house".



The Cocoon Cafe

New Jersey Institute of Technology, United States

Lead Designer(s): Constance Chu

Winner in Hospitality: Bar and Restaurant

Description: The Cocoon is a college cafe for design students and faculty inspired by Jan Waterston's Velo Chair used throughout. The cafe aims to extend the chair's seamless relationship of user-to-object to user-to-space. Echoing the chair's continuous form and all-wood construction around the human body, the wooden wall curves into a mezzanine, wrapping around the guest like a cocoon and defining itself as an intimate space of its own. Boundaries between architectural components also become seamless as structure becomes furniture in the mezzanine, gallery, and lower banquette seating.



Cornersmith: Forage

Sydney Design School, Australia

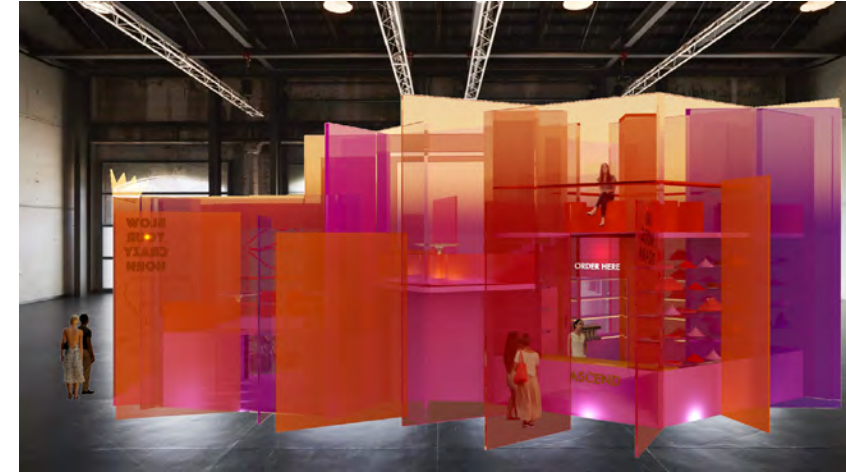
Lead Designer(s): Louise Mackay

Winner in Hospitality: Bar and Restaurant

Description: Forage: (verb) the act of gathering wild food or provisions to eat or use.

Cornersmith will inspire tribe members from far and wide to escape to a place where people dream of dining. A place to forage for wild edibles, embrace natural elements and to feel optimistic, nourished and grounded.

The final design not only inspires whimsy, foraging and activism through design and function, but a marketing and branding plan to ensure the name Cornersmith, and the essence of the brand, is known across the country.



Ascend

Sydney Design School, Australia

Lead Designer(s): Louise Mackay

Winner in New Concepts

Description: Do you ever feel overwhelmed by everything going on in the news? Or trying to keep up with the insta life? Or need to escape from work and the hustle and bustle?

Well, it is time to ascend to a new place... ascend to a moment of joy.

Ascend is a vibrant design solution for a pop-up cafe in collaboration with Sydney Festival and Carriageworks Sydney. Ascend to joy in this pop-up cafe – an inspiring collective of colour, art and amazing architectural cakes.



Warm home

Lead Designer(s): Xin Ru Cai

Winner in Residential Interior

Description: This is a residential space designed for a three-generation family. The design aims to offer sufficient privacy for the family members and arrange an area for them to exercise, relax, study, and enjoy their entertainment. A house illuminated by natural light and wide-open space are the keys for a family to grow and live healthily and happily.



Hope Lives Here

Sydney Design School, Australia

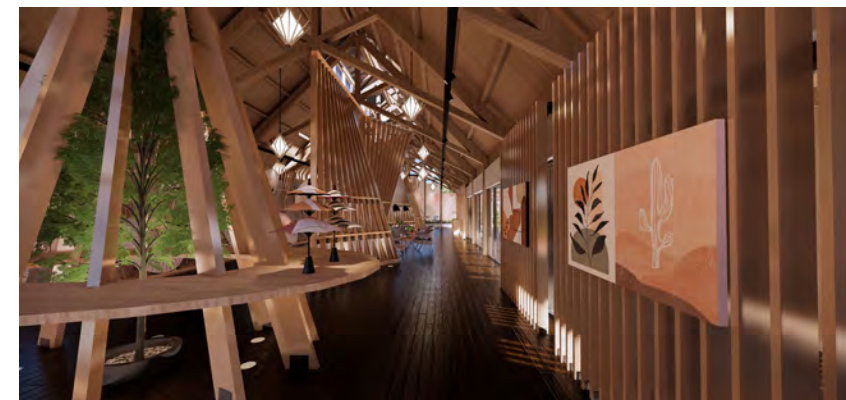
Lead Designer(s): Louise Mackay

Winner in Institutional Interior Design

Description: MATER HAEMATOLOGY WARD, NEWCASTLE NSW

In 2005, Louise was diagnosed with Acute Lymphoblastic Leukaemia, a cancer of the bone marrow. Louise was 18 years old. Within days she was receiving chemotherapy and blood transfusions - commencing a treatment protocol of 36 months.

Some of the hardest parts of her treatment was the isolation, losing her hair, facing the prospects of death, pain management, boredom and losing many friends throughout her journey.



Innovative Chinese Paper Umbrella Store

Chienkuo Technology University, Taiwan

Lead Designer(s): LU, KUAN-JU

Winner in Retails / Shops Interior Design

Description: This shop is located in the suburb area. The building is surrounded by forest. By early afternoon sunlight. Which is more quiet and slow-paced. The focus of interior design is to show the effect of modeling cabinets. This design is inspired by the backbone of an oiled umbrella. The beautiful and orderly modeling section is formed by the arrangement of wood skeletons. The continuous pattern and product could smoothly merge into the display stands inside the space.

project management



The Yearning of the Forest

Chienkuo Technology University, Taiwan

Lead Designer(s): Cisui Wang

Winner in Retails / Shops Interior Design

Description: In the age of the epidemic, the rhythm of life in the city was pressed the pause button, people get along with each other also a point of vigilance, we want to create a space in a corner of the city, provide young people with the dream to play.

In a restaurant, with our fully automated delivery system, customers simply order through the tablet, Meals are delivered directly from the kitchen to the customer, liquid food is distributed in a sealed container, in the process, service personnel and customers do not have any contact, it can reduce the chance of human contact.



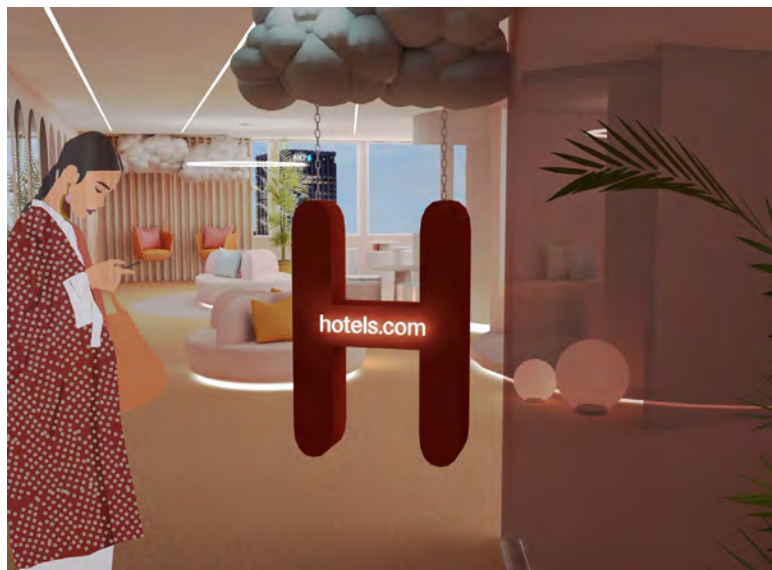
A New Hope

ArtCenter College of Design, United States

Lead Designer(s): Liang Yu(Levi) Lu

Winner in Retails / Shops Interior Design

Description: Before the COVID-19 pandemic, Los Angeles was a hotspot of growing homelessness. Now, this crisis is now set to get much worse. The pandemic has brought suffering, fear, and helplessness to populations everywhere. Therefore, inspired by the Los Angeles-based accessories brand-The Giving Keys, this retail store, situated in Abbot Kinney Blvd, is designed not only helps homeless individuals find employment and a chance to transition out of homelessness but also creates a space for customers to get a taste of hope, realize themselves and take action for a better life.



Destination Utopia

Sydney Design School, Australia

Lead Designer(s): Louise Mackay

Winner in Workplace / Office Interior Design

Description: Destination Utopia
Noun: an imagined place or state of things in which everything is perfect.

You are invited to dive into a utopian world illustrated by futuristic, tech-glam aesthetic combined with bright colours and pastel hues. Destination utopia is derived from the vision of the future of hotels. Exploring the concepts of wanderlust and futurism, I came up this vision of paradise for Hotels.com - a utopian destination. Escape the every day life through surreal beauty and physical tactility that invites discovery and encourages wanderlust.



XE500 RSM

Motorola Solutions Inc, United States

Lead Designer(s): Motorola Solutions Inc

Winner in Communication equipment and process

Description: APX™ XE500 Remote Speaker Microphones (RSMs) are designed with the user's extreme environment in mind. These RSMs feature an asymmetrical shape to help you find the controls without looking, even while wearing bulky gloves. The large push-to-talk button and an extra-large emergency button, which illuminates orange when activated, are easy to locate, but shielded so they're not accidentally activated.

XE500 RSMs feature a dedicated channel knob designed to mimic the channel knob of the radio.



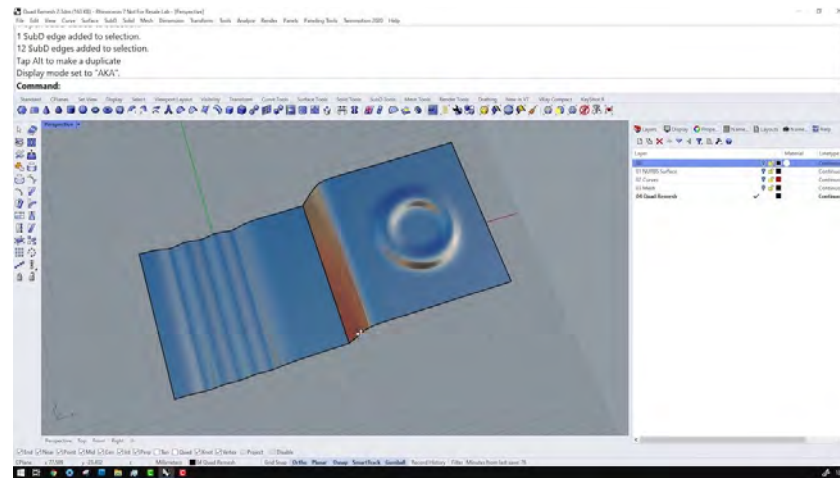
Hilti PMD 200

Hilti Corporation, Liechtenstein

Lead Designer(s): Hilti Corporation

Winner in Drawing, 3 D, site layout, Floor plan, and Architectural software

Description: PMD 200 is a compact, laser-based tool used to transfer locations from an architect's drawings to reality on the construction site. Unlike traditional tools, this device removes many manual measuring tasks required to mark the exact location of internal walls. All tasks are controlled intuitively via a dedicated tablet. This speeds up the process and removes scope for error. In addition, it makes complicated geometry, such as curved walls, more accurate and thus ambitious projects easier to implement.



Rhinoceros 3D V7

Rhinoceros, United States

Lead Designer(s): Rhinoceros Team

Winner in Drawing, 3 D, site layout, Floor plan, and Architectural software

Description: Rhino 7 is the most significant update in our history. You can create organic shapes with our new SubD tools, launch Rhino and Grasshopper as an extension to Revit® with Rhino.Inside.Revit, or use the powerful quadrilateral remeshing algorithm to create a beautiful quadrilateral mesh from NURBS geometry or meshes. This new version opens the door to all-new workflows and refines many of the core features.

Rhino Software for 3D CAD Modelling
From skyscrapers to superyachts, furniture to footwear, aircraft and marine interiors, for items of jewellery plus product, industrial design and many more Rhinoceros 3D is a versatile, popular & highly capable 3D modelling solution.



Flexijet 3D

Flexijet GmbH, Germany

Lead Designer(s): Flexijet GmbH

Winner in Drawing, 3 D, site layout, Floor plan, and Architectural software

Description: With Flexijet 3D, literally everyone can quickly, efficiently and cost-effectively take measurements and assess dimensions accurately to the millimeter precise, and insert the data directly into CAD. Whether you are a beginner, an all-rounder or a CAD specialist, with Flexijet 3D you benefit from the principle of "measurement drawing", which offers you a multitude of advantages over conventional measuring techniques and point clouds from laser scanners.



Pellet-X

Roboticplus, China

Lead Designer(s): Fan Wu and Hao Meng

Winner in Drawing, 3 D, site layout, Floor plan, and Architectural software

Description: The Pellet-X architectural 3D printer is compatible with most six-axis industrial robots and allows flexible printing of large building components. Data from building plans can be imported directly into the control platform and implemented efficiently and accurately.

The device has a strong adaptability of a wide range of printing materials. With common plastic pellets as printing material, the cost will be reduced by 75% compared to wire printing.



RiskWatch (Lone Workers)

Amberstone Security Ltd, United Kingdom

Lead Designer(s): Amberstone Amberstone

Winner in Health and Safety (HSE) software/process and innovation

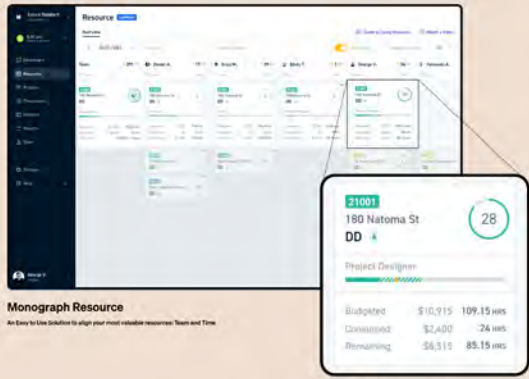
Description: RiskWatch harnesses smartwatch technology, connecting via 3G, 4G or WiFi to provide critical support to lone workers and vulnerable people. The 'Red Alerting' functionality is monitored 24/7/365 allowing live audio monitoring and GPS location tracking. This cost-effective worker welfare solution can be deployed quickly and easily and provides reassurance for the wearer while tracking their location and creating a detailed audit trail of times, places and events.

construction product

Your New Monday Morning Dashboard

Monograph's Resource is the way modern firms manage their most valuable resource: their team's time.

Empower your remote team. Spec a Modern Sync Today.



Monograph Resource
An Easy-to-Use Solution to align your most valuable resources: Team and Time

180 Natoma St 28

Project Designer

| | | |
|-----------|----------|------------|
| Budgeted | \$10,915 | 109.15 hrs |
| Consumed | \$2,400 | 24 hrs |
| Remaining | \$8,515 | 85.15 hrs |

MONOGRAPH

See Real Time Budgets and Forecasts in One Card

Resource by Monograph

Monograph, United States

Lead Designer(s): Robert Yuen

Winner in Project Managements software/ process and innovation

Description: Founded in 2019 by three architectural designers, Monograph is a practice operations platform transforming the way AEC professionals oversee projects, timesheets, and forecasts in one, integrated and simple interface. To date, the software has helped more than 200 firms manage over \$300 million in projects of all scales. The cloud-based system is disrupting the status quo by ridding firms of the ineffective spreadsheets and tools that treat cost, resource, and project management as separate activities.



Illuminated Glass Ceiling and Wall Features

GPI Design, United States

Lead Designer(s): Bertin Radifera

Winner in Electrical & Lighting Systems and products

Description: Four massive backlit canopies flow from the exterior ceiling into the lobby, and then down the wall to the floor, drawing the eye – and the patrons - further into the space. GPI Design established a turnkey package from design through installation to bring this design to life. The mock-up process in particular allowed for countless testing, prototypes, engineering and proof of concept to perfect the design and layout of these illuminated feature ceilings and walls.



PPG ULTRALAST™ Paint + Primer with Clean Surface Technology™

PPG, United States

Lead Designer(s): Darin Laird, Gereme Hensel, Karen Rechenberg, Mike Zalich, Joanne Currie
Winner in Finishes: Kitchen, bathroom, decorations... etc

Description: PPG ULTRALAST™ paint + primer is a super-premium, stain-resistant interior paint featuring PPG CLEAN SURFACE TECHNOLOGY™, a powerful integration of PPG automotive and consumer electronics coatings technologies that delivers an industry breakthrough in stain repellency and washability. PPG UltraLast forms a barrier to both oil-based and water-based stains, preventing them from penetrating the paint film, so that scuffs and stains stay on the surface where they can be washed away easily with gentle all-purpose cleaners – no need for abrasive cleaners and sponges that remove paint and damage the finish.



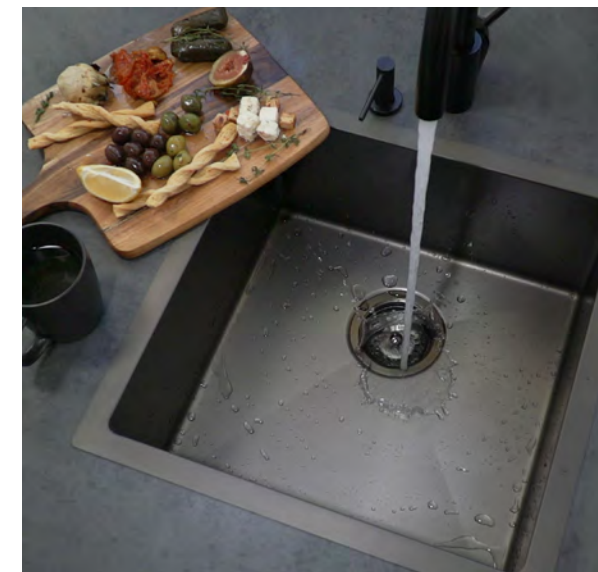
RFL251R

Aec Lighting Solutions Co., Ltd, China

Lead Designer(s): AEC Lighting Solutions Co., Ltd

Winner in Electrical & Lighting Systems and products

Description: The battery-powered RFL251R combines a very bright LED work light with a laser rangefinder, resulting in a compact unit. The handy and robust device, which allows for unit conversion between feet, inches and metres, is designed for single and continuous measurements of distances up to 60 metres in the construction industry. In addition, the instrument can calculate the distance between the lowest and highest point of an object with an accuracy of 2 mm.



Lavello Kitchen Sink

Meir Australia Pty Ltd, Australia

Lead Designer(s): Rick Bazerghi

Winner in Finishes: Kitchen, bathroom, decorations... etc

Description: Meir's Lavello sink range has solved the problem of deteriorating colored kitchen sinks by combining the latest innovations in nanotechnology with PVD finishes that have resulted in a truly superior scratch-resistant product designed for the luxury market but priced competitively for the mid-range consumer.

Our sinks withstand a high level of abrasion and wear due to the nano aggregate layer making them almost scratch proof.

The overall design is functional and contemporary optimized for easy installation and maintenance.



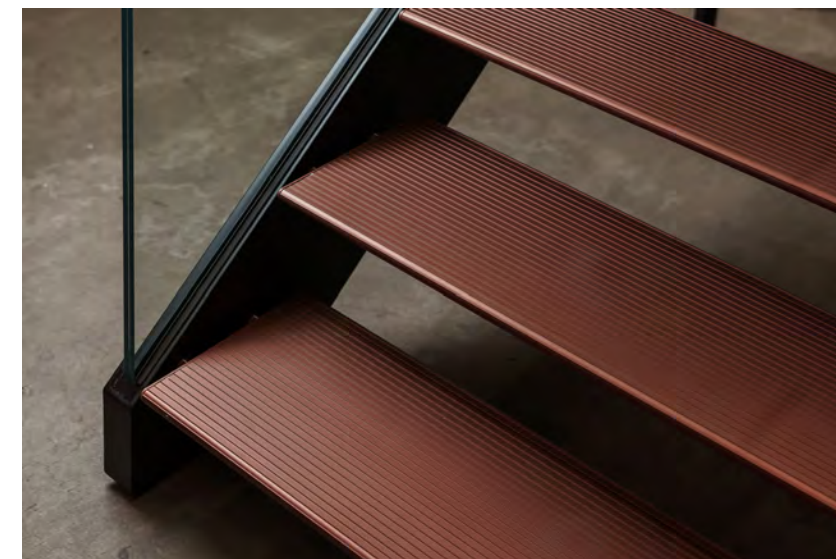
The EPIC Block

Eco-Panels, United States

Lead Designer(s): Charles Leahy

Winner in Energy Saving / Energy renewal systems

Description: Our revolutionary new composite product is the intelligent EPIC Block, which stands for the Eco-Panels Insulated Composite (or Concrete) Block. No longer do you need mortar or a skilled mason, and no longer do you need to insulate on top of a concrete wall. You look at our product and you know how it goes together. Even a "basic" EPIC Block can support over 70,000 lbs compressive loading and the blocks can be drystacked and later reused or bonded together with adhesives or even double sided construction tape.



NextGen

EeStairs, Netherlands

Lead Designer(s): Fenne ten Vaarwerk and Cornelis van Vlastuin

Winner in Finishes: Kitchen, bathroom, decorations... etc / Outdoor systems and products

Description: The NextGen is an exclusive, patented innovation from EeStairs, a stair system with exceptionally clean lines that is durable, easy to maintain, and can be installed rapidly because the key components are 'clicked' together and locked into position on site.

NextGen's Aero™ stair-treads are unique, with a cross-section inspired by aircraft wings. EeStairs in-house design and manufacturing team took great care to get the key details right so that the stairs could be made and installed with greatest possible accuracy and safety for stair-users – and at the lowest cost.



Galila's Staircase

Xavier Lust Studio, Belgium

Lead Designer(s): Xavier Lust

Winner in Flooring & Concrete materials and structures

Description: Sculptural staircase and guardrails
Commission : Galila's P.O.C. (Passion Obsession Collection), private museum in Brussels

Xavier Lust was commissioned the creation of a central piece in the main hall of Galila's P.O.C. The result is a stunning staircase with rippling and flowing steps that look like endless waves. A coincidental nod to Galila's name ("gal" means "wave" in Hebrew), connecting the first two floors of the building.

Galila bought her first contemporary artwork at the Armory Show in New York in 2005.



Volvo ECR58 Generation F

Volvo Construction Equipment, Sweden

Lead Designer(s): Volvo Construction Equipment

Winner in Hand Tools and Heavy Equipment

Description: In devising the ECR58, the aim was to combine all of the industry's best practices into a single product. And so, it has come to pass: the 6-tonne ECR58 compact excavator can unlock the full potential of its short swing radius and deliver top performance in a great multiplicity of applications.

ECR58 combines intelligent features with convenient operation and a balanced, innovative design. In the development of the compact excavator series, the focus was placed on implementing user feedback in order to achieve an improved ergonomic layout and functionality.



Embodied Beauty™ Collection

Interface, United States

Lead Designer(s): Karl Pei

Winner in Flooring & Concrete materials and structures

Description: The Embodied Beauty™ collection is designed to help restore the health of the planet and lower the carbon footprint of built spaces with style. It features a range of beautiful carpet tile designs, including the first-ever cradle-to-gate carbon negative carpet tiles in three styles: Shishu Stitch™, Tokyo Texture™, and Zen Stitch™. In addition, all seven styles in the collection are carbon neutral across their full product life cycle through Interface's Carbon Neutral Floors™ program.



DX17Z-5 Crawler Excavator

Doosan Infracore, Korea

Lead Designer(s): Doosan Infracore

Winner in Hand Tools and Heavy Equipment

Description: The state-of-the-art design of the DX17Z-5 mini-excavator is characterised by dynamic lines and expresses power, performance and efficiency.

This new zero house-swing mini excavator with high lifting capacity is ideal for rental and urban construction sites with limited space.

Despite its compact construction, the mini-excavator offers high functionality. The design makes it possible, for example, to remove the roof in low environments or to reduce or increase the width of the excavator as required.



Viracon PLUS Smart Glass powered by Halio

Viracon, United States

Lead Designer(s): Viracon and Halio Team

Winner in Glassware structures and products

Description: ADVANCED SMART GLASS: TINTS AND CLEARS ON DEMAND

Viracon PLUS Smart Glass powered by Halio is the most advanced tinting glass available. It looks just like your typical façade glass. But with this glass you can control the tint to reduce solar heat gain and glare.

Best aesthetics from clear through full tint. Tints through a full spectrum of neutral gray options to block solar heat and glare. No more of the blues or yellows featured in legacy smart glass products.



Tubmarine and Kebony Wood

Tubmarine/Kebony, United Kingdom

Lead Designer(s): Chris Galley

Winner in Outdoor systems and products

Description: The Tubmarine is a new wood-fired hot tub, set to revolutionise the market. Combining expert craftsmanship with the world's leading construction materials, the Tubmarine heats up in under two hours, and requires no electricity and little maintenance. Made from 80% recycled materials it responds to the growing need for eco-friendly home and outdoor products. Kebony, a sustainable leader in modified wood, which is both weather resistant and highly durable, was chosen to clad the Tubmarine demonstrating a core commitment to eco-conscious living in the luxury, outdoor furniture sector.



Artforms/Artex

Belgard, United States

Lead Designer(s): Joël Rémillard

Winner in Outdoor systems and products

Description: Artforms (Artex) is the hardscapes industry's first completely finished modular concrete panel system. Artforms offers clean lines, smooth texture and an aesthetic that is unmatched in the outdoor living category, offering a modern yet timeless look at a reasonable price. The innovative system allows the pre-formed concrete panels to be configured and affixed with simple, stainless steel hardware that is adjustable, allowing for personalized configurations.



BLANCO VINTERA Farmhouse Sink Collection

BLANCO, United States

Lead Designer(s): BLANCO

Winner in Plumbing, water systems and products

Description: BLANCO introduces the VINTERA farmhouse sink collection – a clean, contemporary version of the apron front sink style with versatile installation capabilities. Farmhouse sinks are typically fitted as undermounts, but the unique design of the VINTERA also allows for a seamless flushmount installation. This unique installation option visually showcases a beautiful rim of SILGRANIT color around the top of the sink, and is flush with the countertop.



ASCEND® Composite Cladding System

Alside®, United States

Lead Designer(s): Shawn Hardy

Winner in Outdoor systems and products

Description: The ASCEND® Composite Cladding System is an innovative solution that allows builders to do twice as many jobs compared to other materials, which also means a faster turnaround time for homeowners. The ease of installation is explained by ASCEND's self-aligning stack lock, ideal for one-person hanging. No sealing, touching up, joint flashing, or caulking, either. Plus, an ASCEND plank weighs just 25% of a comparably sized fiber cement panel.

ASCEND also offers incredible value providing builders at least a 10% lower total installed cost, versus fiber cement and engineered wood, while achieving the established and familiar look of real wood.



YWW 50 TU Thermally Broken Window Wall System

YKK AP America, Inc. , United States

Lead Designer(s): YKK AP America, Inc.

Winner in Wall & Isolation systems and materials

Description: The YWW 50 TU thermally broken window wall system offers clean design, fast installation, and maximum versatility, making it a competitive alternative to curtain wall for mid-to-high-rise building applications.

With higher thermal performance and the ability to handle heavy design loads for oversized panels of glass, this product is a flexible window wall product that spans from floor to floor and is able to adapt to innovative architectural designs, like that of a continuously changing radius.



Vibe Infinity Inground Spa

Aquatica Group, United States

Lead Designer(s): Maurizio Amato

Winner in Outdoor systems and products

Description: The Vibe Infinity Spa is the only hot tub in the world with both active and passive therapy seating.

Integrated air jets create a special flotation sensation, providing a feeling of complete weightlessness, lifting up the entire body, while simultaneously delivering a powerful hydromassage on the back and arms. Hydromassage therapy offers many health benefits, such as relieving stress, anxiety, insomnia, inflammation, muscle pain and improving blood circulation.



The SIT Furniture Design Award was created to recognize the efforts of talented international furniture designers, interior designers, and interior decorators who use furniture in the design of their spaces. The SIT Award celebrates creativity and shares with the world the innovative visions of furniture and interior designers.

www.sitaward.com



The LIT Design Awards were created to recognize the efforts of talented international lighting product designers and lighting implementers. We believe that lighting is both an art and a science, and is one of the most important elements of design. The LIT Awards were envisioned to celebrate creativity and innovation in the field of lighting products and applications..

www.litawards.com



The BLT Built Design Awards honor the expertise of all professionals involved in the realization of outstanding projects, including architecture firms, interior design experts, construction products, and project management.

www.bltawards.com



The mission of the LIV Hospitality Design Awards is to celebrate the quality of architectural ventures and the diversity of interior design that shape hospitality around the world. The LIV Awards is an inclusive platform, pursuing exceptional projects within the living and dining spaces, from co-living to beach resorts, from fine dining restaurants to pop-up bars.

www.livawards.com

OUR COMPANY



3C Awards® is a leading organization curating and promoting design across the globe.

The company's key mission is to promote design through awarding great designs, exhibiting, developing designers and artist communities, providing networking opportunities, and advancing the appreciation of excellence in design through education, outreach, and grants. 3C Awards® represent today's diversity and innovation in Lighting Design, Furniture Design, Interior Design, and Architecture. Each brand is a symbol of design excellence around the world, showcasing Professional and Emerging designer's work to over 100 expert jury members. Receiving submissions from over 65 countries every year, 3C Awards® provide unique opportunities to Designers across the world to reach new markets and increase exposure and media coverage.



3C Group® recognizes and supports talented designers through awards, press, media exposure, events, and exhibitions organization.

Developed by Hossein Farmani and Astrid Hébert, 3C Awards® is part of a larger organization 3C GROUP® based in Switzerland and specialized in Awards, Marketing, Media, and Events.

3C Group® is a sister company to Farmani Group, founded by Hossein Farmani. Farmani Group is a leading organization curating and promoting photography, design, and architecture across the globe since 1985.



Above: *Tubmarine and Kebony Wood* by Chris Galley

Front Cover: *Naturalism Creates a Magic Wonderland* by Zhike Wang & Xiaoshui Li



www.bltawards.com