

Second Annual

BLT BUILT DESIGN AWARDS

2022



**The BLT Built Design Awards honor the expertise of all professionals involved in the realization of outstanding projects, including architecture firms, interior design experts, construction products, and project management.**

*BLT Built Design Awards encompasses all forms of buildings, projects, and infrastructure that cope with the challenges of today's urbanization; projects which inspire the next generation of professionals. This annual program aims to celebrate projects, people, and their passion for the industry and, through our rigorous judging process, we recognize those that have gone above and beyond normal, expected levels of achievement. We want to share your excellence with the world.*



# jury



**Alvaro Montoria**  
Americas Design Services -  
Hyatt Corporation  
Regional Vice President &  
Studio Head - Lifestyle Brands



**Steffen Lehmann**  
Founding Partner and CEO,  
si\_architecture + urban design  
Professor of Architecture and  
Urbanism at the University of  
Nevada, USA



**Li Yuejiu**  
a9a Architects / Jiuzhu Branch  
of Architectural Planning and  
Design Research Institute of  
Chongqing University  
Founding Partner & Design  
Director / President



**Kourosh Salehi**  
LWK + PARTNERS  
Design Director



**Thomas Hoepf, FAIA, NCARB**  
EXP Architects + Engineers  
Senior Vice President / Design  
Director



**Lichen Ding**  
DLCA Architects  
Founder & Chief Designer



**Penny Craswell**  
The Design Writer  
Author



**Phill Mashabane**  
Mashabane Rose and  
Associates  
Principal and Owner



**Claude Paquin**  
Magazine FORMES  
Publisher



**Marie Crabié**  
Tema.archi  
Journalist



**Dave Pigram**  
**supermanoeuvre**  
 Director



**Rodrigo Langerica Avila**  
**School of Architecture,**  
**Universidad Anahuac**  
**Querétaro**  
 Dean



**Henry Mickleburgh**  
**BD Solutions**  
 Management Consultant



**Leni Popovici**  
**KAP Studios**  
 Co-Founder



**Valeria Senkina**  
**Dseesion Interiors**  
 Founder, General Manager  
 and Chief Architect



**Angelo Bucci**  
**Università Europea del**  
**Design – Pescara**  
 Head of Interior Design  
 Department



**Heath Gledhill**  
**Aurecon**  
**Architecture & Design**  
**Integration Practice**  
 Leader



**Waad El Hadidy**  
**SH Hotels & Resorts**  
 Design Director  
**The Medusan**  
 President



**Jason Wang**  
**Asia Pacific Design Center**  
**(APDC)**  
 Secretary-General



**Geoff Wilkinson**  
**Wilkinson Construction**  
**Consultants**  
 Managing Director



**Lynn Wang**  
**Asia Pacific Design Center**  
**(APDC)**  
 Head of Overseas Affairs  
 Dept



**Sara Jazayeri**  
**Studio 360 Architecture &**  
**Interior Design**  
 Principal



**Murat Soygenis, FAIA**  
**S+ ARCHITECTURE**  
 Founding Partner



**Patricia Medina**  
**Van Belle & Medina**  
 Architect Director



**Kavitha Iyer**  
**Intercontinental Hotel Group**  
 Head of Design, Americas



# winners interviews

# Sara Sheikh Akbari

## *Architectural Design of the Year*



© Jacopo Spilimbergo

Could you tell us a little about your professional journey?  
Where are you from?

I obtained my Bachelor's degree in Architecture from Shahid Beheshti (Meli) University in Tehran. Shortly after graduating, I moved to London to study at the Architectural Association in London, where I received my Master's in Architecture in 2007.

I then joined Zaha Hadid Architects, and since then I have led several design competitions and architectural projects from the early design stage through completion. I was a lead designer and one of the key members of the Heydar Aliyev Center project in Baku, and the project director of the BEEAH Headquarters project in the UAE.

What was the design brief for the "BEEAH Headquarters" project? What was most important for you when planning this project?

BEEAH headquarters embodies BEEAH Group's twin pillars of 'sustainability' and 'technology'. BEEAH's profile as an environmental management company and the brief to design a building to be an exemplar of sustainable design set high aspirations for the project from the outset. This influenced the

geometry and formal composition of the building, its relationship to its context, the arrangement of the spaces, the MEP, the structural and lighting design, and every aspect of the project.

Echoing the surrounding landscape of dunes shaped by prevailing winds, the design responds to its environment as a series of inter-connecting "dunes," oriented and shaped to optimize local climatic conditions.

Ensuring all internal spaces are provided with ample daylight and views while limiting the amount of glazing exposed to the harsh desert sun, the design consists of two primary "dunes" housing the public and management departments together with the administrative zones that interconnect via a central courtyard that defines an oasis and gathering space within the building.

Demonstrating how technology can scale sustainable impact, BEEAH's new headquarters serves as a blueprint for tomorrow's smart, sustainable cities.

How would you describe your role in this project?

I was the project director of our BEEAH Headquarters project in the UAE, leading the team and managing the design and delivery of the project.

BEEAH Headquarters has been designed to achieve net zero with future-ready technologies for minimal energy consumption. What were the biggest challenges you and your team faced?

While the ambitious outlook follows the aspirations of the region, at the time of our appointment there was a shortage of regional precedents for projects with similar objectives in terms of sustainability. This posed challenges in meeting the targets set for the project, such as uncertainty about the region's resources, among other things.

What was put in place to reduce or optimize energy consumption?

1. The building's photovoltaic system generates power to meet the building's peak summer demand, thus producing excess electricity during off-peak months, which is then fed back into the grid. Tesla batteries allow this system to power the building at night.
2. Its external glass-fiber reinforced concrete cladding system, also

# BEEAH Headquarters

locally produced, increases the building's thermal mass and dissipates heat away from the interiors.

3. The design minimizes the glazing exposure to the harsh desert sunlight while ensuring ample, high-quality daylight and views within the internal spaces.

4. The building's structure is comprised of locally sourced and recycled construction materials.

5. An on-site water treatment facility filters wastewater to minimize consumption.

6. Native or adaptive species of vegetation have been specified to minimize the need for irrigation.

7. Using digital twin technology with self-learning and self-healing capabilities, the building's smart management system predicts occupancy by automatically adjusting light and temperature to optimize energy efficiency.

8. Powered by its solar array and equipped with next-generation smart technologies, the new headquarters has been designed to operate to LEED Platinum standards and net-zero energy. The new headquarters is a climate-conscious building that constantly modulates itself, becoming smarter and more efficient while drawing on data from its living laboratory.

**Can you please share with us what winning the "Architectural Design of the Year" prize means to you?**

We are delighted that BEEAH has been selected as the Architectural Design of the Year by BLT Awards. BEEAH Headquarters has been a memorable project, filled with challenges and excitement, made possible by the passion of all those involved. It is rewarding to see all these efforts come to fruition and witness the end users' experiences with and enjoyment of the building.

**In general, what is your guiding design principle?**

Our designs often explore logic and coherence within the environment. We focus on providing a unique response to the client's brief with current and future site conditions, to achieve each project's full potential.

**Last, what can we wish for you in the future?**

We hope to continue developing opportunities where design meets sustainability at its core, and together with our team of collaborators, we hope to continue designing buildings we can all be proud of.

Powered by its solar array and equipped with next-generation technologies for operations at LEED Platinum standards, the new BEEAH Headquarters has been designed to achieve net-zero with future-ready technologies for minimal energy consumption.

Its design responds to its environment as a series of interconnecting 'dunes' orientated and shaped to optimize local climatic conditions. Embedded within its context of Sharjah's Al Sajaa desert, the design echoes the surrounding landscape shaped by prevailing winds into concave sand dunes and ridges that become convex when they intersect.

Providing internal spaces with ample daylight and views while limiting the quantity of glazing exposed to the harsh sun, the headquarters' two primary 'dunes' interconnect via a central courtyard, defining an oasis within the building which is integral to its natural ventilation strategy.

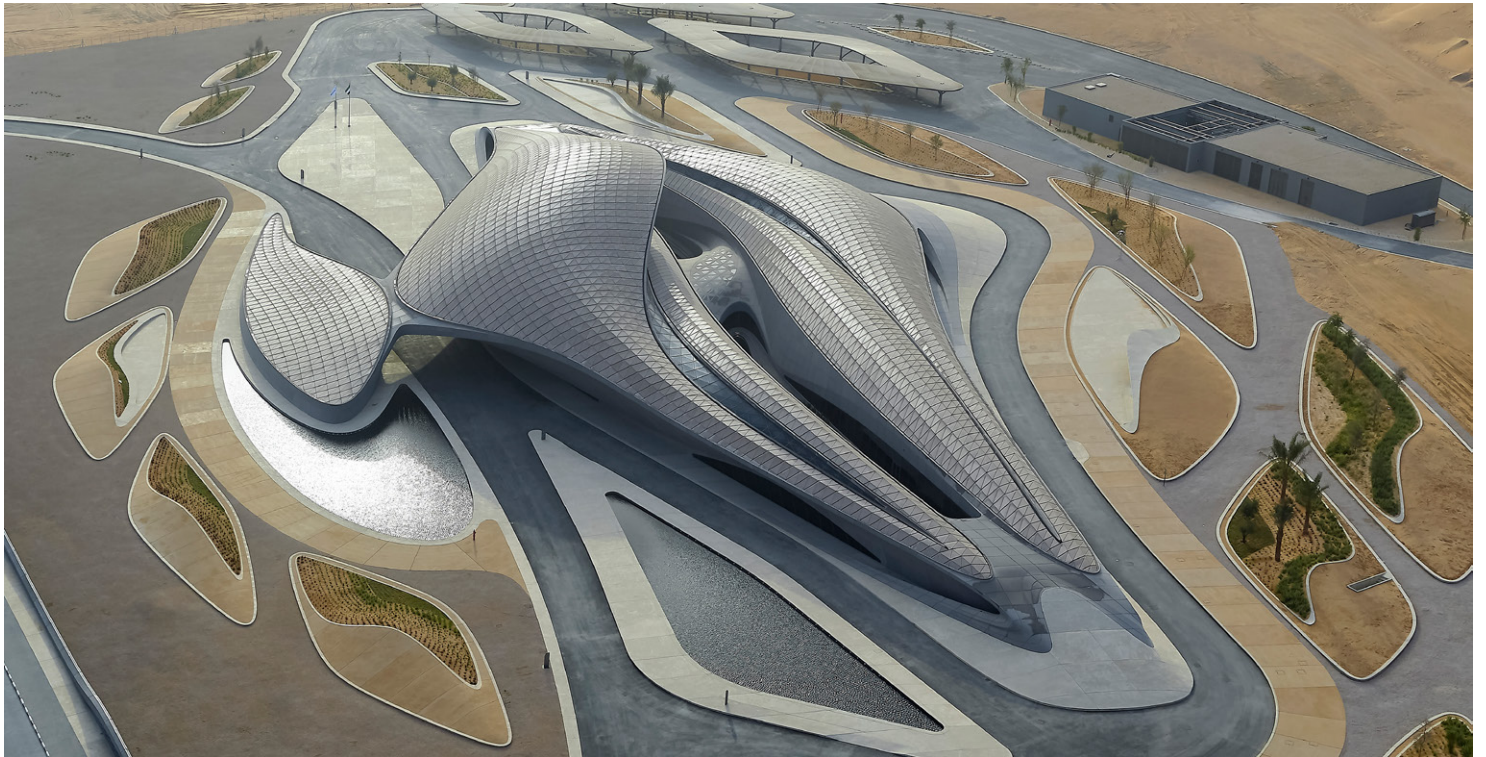
With GRC panels reducing solar gain, the on-site water treatment filtrates waste water to minimise consumption and its solar farm charges Tesla battery packs to meet the building's energy demand. The building's smart management system automatically adjusts lighting and temperature depending on occupancy and time of the day.

*Company: Zaha Hadid Architects*

*Design & Architecture Team: Zaha Hadid Architects*

*Construction Company: Al Futtaim Construction*

*Location: Sharjah, UAE*





# Xudong Zhu

## *Emerging Architect of the Year*



### Could you tell us a little about yourself?

I was born and grew up in Shanghai. After living there for 25 years, I studied abroad at Politecnico di Milano and worked at UNStudio in Amsterdam before and after I completed my studies at the Harvard University Graduate School of Design in Cambridge, United States. I am currently an urban designer at Sasaki's Boston office.

### How did you discover your passion for architecture and decide to join Harvard University?

Influenced by the rapid development of Chinese cities in the 1990s, especially my hometown, Shanghai, I dreamed in my childhood of being an architect and fantasized about how great it would be if a conceptual building that I designed would become a reality, standing in front of me. After studying architecture at Tongji University in 2012, I started to realize that my dream could come true. It took me seven years to get my bachelor's and master's degrees in architecture.

During my graduate period, I had a chance to study at POLIMI as a double-degree exchange student. For my thesis and out of interest, I spent two months visiting 47 local

open residential projects and researching 32 shared urban public spaces. From this experience, I was in contact with the complexity and diversity of Milan's urban public areas. The spatial decisions designed responded to topics such as social equality and environmental inclusivity. Those unexpected development modes, spatial strategies, management methods, and types of activities made me deeply interested in publicity. This experience prompted me to apply for Harvard University's Master of Architecture in Urban Design, after seven years of architectural studies and work at Tongji University. I hope to understand public space better, and I hope my designs will reflect reasonable publicity and respond to diverse urban topics to a certain extent.

### What was your design inspiration behind "Urban Irrigation"?

Urban Irrigation is a representative project since I continue exploring my understanding of designing ecological sustainability with public space, with my girlfriend, Michele Chen, a landscape architect and urban designer studying at Harvard GSD. We see nature as a broadly shared space for the public that includes all beings – humans, and non-humans. In this project, designers are responsible for initiating a co-existing system between nature and urban dwellers. This belief establishes a design prerequisite to create a new typology of urban public space as a spatial product to intrigue a series of nuanced, collective, and experiential activities in, with, and through nature.

### What do you see as the strengths of your winning project and what does this award mean to you personally?

Urban irrigation, in addition to innovating an urban public space typology, redefines the renewal life of urban industrial heritages. Moreover, the project empowers water as the core medium that drives the material process of the space with its public relationships between ecological services, educational engagements, and recreational activities. In technical terms, the project enables the old water tower to form a positive energy production and consumption cycle through rainwater collection, purification, storage, solar power generation, and other energy-saving measures. It transforms a typical street

corner into an urban public plaza out of industrial relics, carrying the daily activities of the surrounding residents while preserving the city's cultural memory.

Urban Irrigation demonstrates my ability to coordinate design across multiple disciplines, such as urbanism, architecture, landscape, and interactive design. This award means a lot. It encourages me to keep exploring the meanings of ecological sustainability in public spaces and pushes me to experiment with them through more practice and research.

*How do you think your own culture and environment have shaped your personal and professional creative vision?*

I have lived, studied, and worked in different countries, such as China, Japan, Italy, the Netherlands, and the United States. I believe culture is not a fixed term. My diverse background gives me a more inclusive attitude toward the living environment. When dealing with design-related matters, it is more natural for me to discover, evaluate, think about, and implement in a more comprehensive and innovative way.

*What are you working on now? When will you finish your studies?*

I graduated from the Harvard University Graduate School of Design in May 2022. After graduation, I became an urban designer at the SASAKI Boston office. SASAKI is an interdisciplinary team that cares about ecology, inclusivity, adaptivity, and definitions of the public realm. While I am learning professional knowledge from different scales of projects at SASAKI, in my spare time I am also doing competitions, research, and project commissions to explore my design manifesto further.

*Last, what can we wish for you in the future?*

I hope to refine and experiment with my design philosophy through more cross-scaled projects and do my best to create meaningful designs in the future. Finally, thank you for the award and interview. I wish BLT all the best!

While traditionally, the term "Irrigation" is the artificial process of applying controlled amounts of water to land to assist in production of crops, in this proposal, "Irrigation" assists in production of activities and human, plant, water lives in an urban context. Located at a street corner on Yuhua West Road, the water tower has been a symbolic legacy of Tangshan's modern industrial period. In the past, it used to serve as a water resource infrastructure for the surrounding residents. With the increasingly improved urban water supply system, the water tower, initially convenient and significant for life and cultivation, has been abandoned by the city today, causing multiple urban concerns.

Urban Irrigation visions a future sustainable urban public space that facilitates a contemporary life based on the preservation of industrial relics. It maintain a spirit that respects the history of the modern industrial period and imagines a future that integrates innovation with nostalgia.

Together, ecological services, recreational activities, educational engagements form a systematic connection, promoting a renewal typology for industrial relics with water towers as the medium.

*University: Harvard University*

*Lead Designer: Xudong Zhu*

*Architect: The TEN*

*Photo Credit: Xudong Zhu*

*Location: Tangshan, China*





# Masahiro Yoshida

## *Interior Design of the Year*

Could you tell us a little about your professional journey?

I was born in 1977 in Osaka, Japan. In 2001, I graduated from the department of architecture, Kyoto Institute of Technology “Waro Kishi laboratory”, and I joined TAKARA SPACE DESIGN the same year. I established KAMITOPEN architects in 2008, an Architecture Office firm centered around Interior Design.

How/when did you discover that you wanted to work in design?

I chose my career path when I was in high school.

What was your inspiration to create KAMA-ASA Shop?

I was inspired by the craftsmen who make kitchen knives. As KAMA-ASA Shop’s policy is set on the belief that good tools are made for good reason, it delivers to the customers the excellent skills of craftsmen creating kitchen utensils. Therefore, the most appropriate for the shop’s space was to show the architectural skills of craftsmen. The rebar, a stick-shaped rolled steel that is usually hidden in the wall became the main feature of the design.

What was most important to you when planning this project?

We are pleased to have been recognized for the work we have done over the past 10 years with our clients. It encourages us to continue to work with the same stance for the next 10 years.

What are you working on at the moment, and do you have any upcoming project or upgrade that you’re able to tell us about?

I am currently designing a solo sauna facility. It is a space where you can feel the outside environment while being indoors, using the latest technology. I am interested in eliminating the boundary between indoors and outdoors.



# KAMA-ASA Shop



Concept - the rebar

The rebar is a stick-shaped rolled steel material formed from irregular nubs called ribs and joints that are used as a building construction material.

As KAMA-ASA Shop's policy is set on belief that good tools are made for good reason, it delivers to the customers excellent skills of craftsmen, which make kitchen utensils.

Therefore, the most appropriate for the shop's space was to show architectural skills of craftsmen. The rebar that is usually hidden in the wall became the main design.

Handrails and furniture were designed with rebar. Although they are simple, they still require the use of craftsman skills.

The knives' shelves are made from railroad ties. They express the long history of knives that can be used for many years.

As designers, we hope that craftsmen skills will be introduced to many people.

*Company: Kamitopen Co., Ltd.*

*Eight Branding Design Co., Ltd.*

*Lead Designer: Masahiro Yoshida*

*Design Team: Yoshie Ishii,*

*Hidemitsu Naganuma, Akihiro Nishizawa*

*Architect: Naganuma Architects Co. Ltd.*

*Construction Company: tub.studio Co., Ltd.*

*Photo Credit: Keisuke Miyamoto*

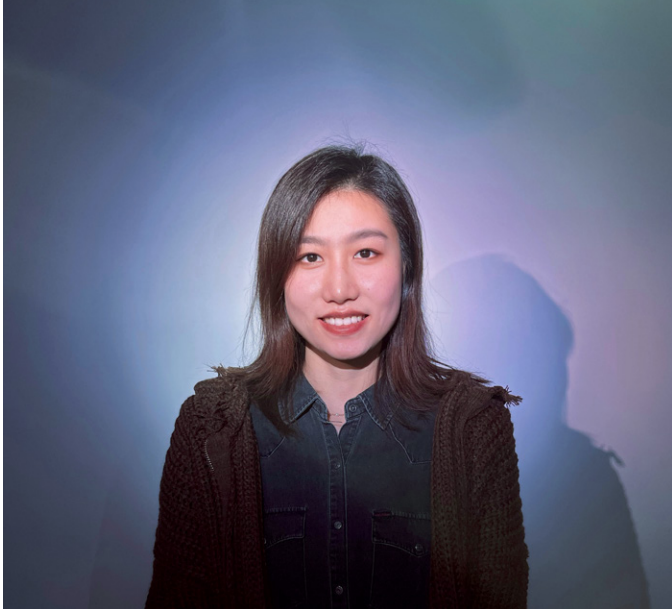
*Location: Tokyo, Japan*





# Yue Che

## *Emerging Interior Designer of the Year*



### Could you tell us a little about yourself?

Hi! I am from China and am currently an interior design graduate student about to finish my degree at the Savannah College of Art and Design. I am passionate about art and travel, and I always keep an observant and creative eye on life, which I consider my source of inspiration. Outside of school, I also work as a freelance architectural illustrator, helping people portray what their homes look like.

### How did you discover your passion for interior design and decide to join the Savannah College of Art and Design?

I began studying drawing and art as a child, which laid the foundation for my aesthetic pursuits. Through my four years of undergraduate studies in environmental design, I became concerned with integrating and utilizing people and their surroundings. To explore the perceptual experience and emotional changes of human beings in space, as well as the balance of aesthetics and function in space, I decided to further my interior design skills and attempt to create meaningful spaces through the professional knowledge and advanced resources provided by SCAD.

### What was your design inspiration behind “Ally- A center for Children Psychological Trauma Recovery”?

Children’s mental health has been neglected. I initially researched designs to address children’s trauma out of curiosity and found that there was a lack of relevant designs on the market. So, my original intention was to create a new design paradigm and awaken the public’s attention to children’s mental health. After case studies and interviews with experts, I found that communication therapy and horticultural therapy were the most effective solutions that could be easily accepted and understood by children. Those were the inspirations that informed the entire design solution, which is dedicated to providing them with an equal, connected, and relaxing environment.

### What do you see as the strengths of your winning project, and what does this award mean to you personally?

The project is meaningful in that it seeks an innovative approach based on theory and research to solve current social issues through interior design and urges the audience to be more aware of the mental health and real requirements of vulnerable people, including children and the elderly. I am honored that this design is recognized, and this award will inspire me to continue to improve my skills in this field moving forward!

### How do you think your own culture and environment have shaped your personal and professional creative vision?

Creativity is deeply rooted in culture. Growing up in an environment of collectivist culture has shaped me to be inclusive and open-minded, and to always maintain empathy for others. In addition, blending diverse cultural experiences with a more holistic perspective and integrated approach helps me to listen to more different voices and enhances my personal creative and critical thinking.

### What are you working on now? When will you finish your studies?

I will graduate in December 2022, and it has been a rewarding

# *Ally- A center for Children Psychological Trauma Recovery*

and impressive time at SCAD. I'm currently learning the skills to convey interior design effects better and looking for a great opportunity to put all my knowledge and skills into practice.

Last, what can we wish for you in the future?

The courage to make mistakes, the determination to pioneer, and many more amazing and meaningful designs!



The design focuses on the increasing possibility of psychological trauma of children affected by the pandemic, due to restrictive policy on closure of school, which is students' only source of trauma-informed care and support. The purpose of the design is to try to find how the interior design helps traumatized children recover, in order to address the lack of design with healing function integrated with school. The design implications are dedicated to motivating users to engage in social activity and immersive experience, therefore improving the recovery efficiency of psychological trauma.

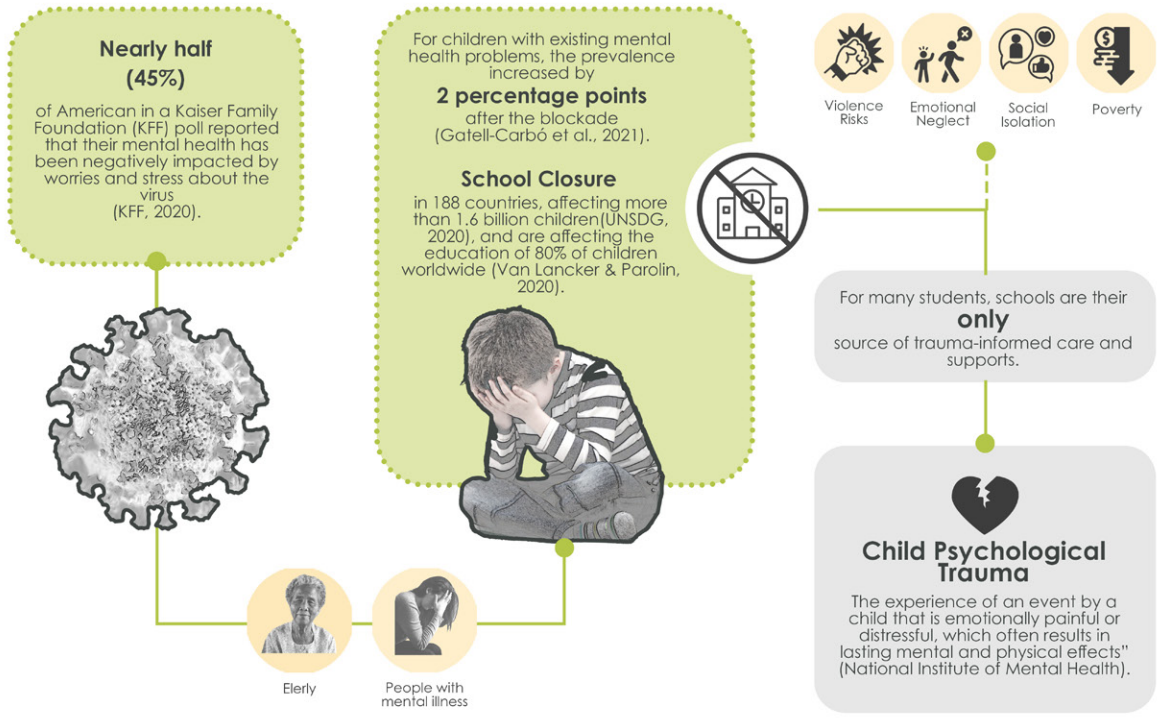
*University: Savannah College of Art and Design*

*Lead Designer: Yue Che*

*Location: Little Rock, AR*



**Problem**





# Chloe Fan & Gabriel Munnich

## *Project Management of the Year*



### Could you tell us a little about your professional journey?

Chloe is from a family construction business in China; growing up around the nuts and bolts of the building world. When I was 15, my city was blooming with construction. But those towers were ugly and removed the cultural and individual identities of the city and its people. I aspired to be an architect and wish to bring a well-designed landscape to the world.

Gabriel, from France, was also crafting, drawing, and tinkering at a young age; he quickly realized that he was most excited when making things.

We met while we were studying architecture at Cooper Union in NY. We immediately realized that we shared a passion for research and architectural technology. We invented and exhibited digital fabrication machines and machine learning research worldwide while we were still students and after. Gabriel developed his thesis around machine learning of architecture, and Chloe developed her thesis about 3D scanning space and urban design.

When did you found the company “Design With Frank”? Why start a new company? What did you envision back then for “Design With Frank”?

We founded our first practice right after graduating in 2018 and founded FRANK together in 2021 inspired by the vision of re-imagine architectural practice on a large consumer scale. We met countless people who shared the paper and pencil sketches of their dream homes and the desire to take control of the design and building process. Designers, con-

tractors, and homeowners all need design software. However, design programs are hard to use and require tons of training. There is no easy way to create a design quickly!

When we created the first prototype of FRANK, we immediately saw it could be to give a new design tool for people. The architecture of the ordinary is important, and, as architects, it is a social duty to envision how to bring design into the large landscape. The development of tools transcends the human landscape.

We realized that most families in the US could not afford to hire architects or could not find the service they needed in architecture firms and decided to solve that issue by creating the most intuitive and fast design home design software for non-professionals.

We have worked with hundreds of individuals and families across the US and helped them design beautiful private homes, and we hope to continue making access to architecture easier.

What was the most important for you when developing this new software?

Most important for us is to be in close contact with our users constantly. We have been hands-on with people's design to understand their needs and thought processes.

Can you please share with us what winning the “Project Management of the Year” prize means to you?

We are very pleased that our work is recognized by BLT design committees. It is important for us because the design field is advanced by great singular projects and new tools and technologies that enable its process. We focus on the latter and are delighted to be recognized for it.

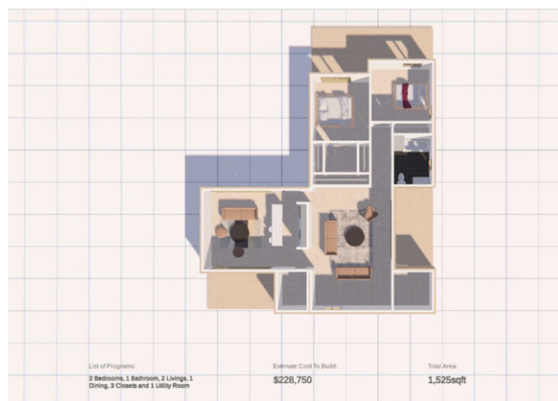
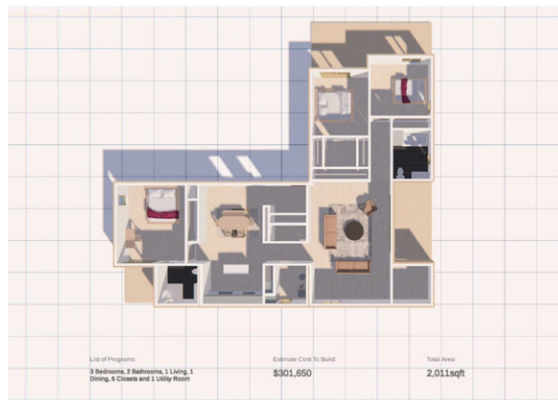
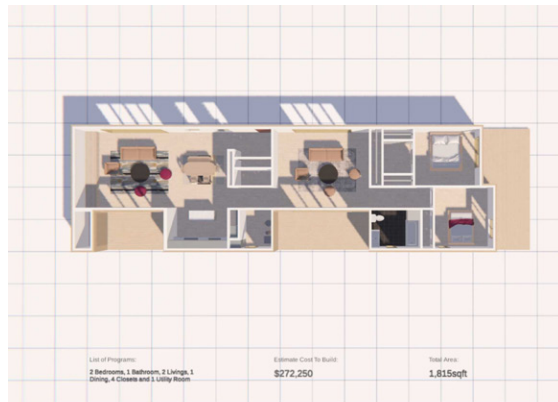
Do you have any upcoming projects or new features to be released that you're able to tell us about?

We are increasing the flexibility of our design tool so that people can use it to fully customize their space. Our goal is to make good design accessible to everyone through service and technology.

# design with FRANK software

Lastly, what can we wish you for the future?

Design bridges people and material together. Please wish us to reach the goal of making Good design accessible for everyone, and making FRANK accessible for everyone. With our first prototype, we were able to support over 100 homes. The 2.0 will help thousands and millions in the future.



FRANK is a smart home design software with real building materials and furniture databases. FRANK empowers people to design dream homes and shop for all the products they need to realize their projects. We make designing in 3D as easy as dragging and dropping in Figma. Our app keeps track of quantities and costs in real time all in the web browser.

FRANK is merging design and materials sourcing in one place.

Frank is revolutionizing design software.

Early CAD software allowed users to draw individual lines and connect them. With many lines, a designer can draw a building. This is how current CAD software work. 30 years ago BIM emerged as a new design paradigm in which designers could connect building components and quantify them.

FRANK allows designers to manipulate rooms, our A.I embed the architectural knowledge required to connect and model rooms based on their location. We make designing a floor plan 100 times faster than any tools available.

FRANK puts powerful design tools in the hands of ordinary people and believes that good house design shouldn't have to be a luxury. FRANK reimagines architectural service and aspires to serve massive consumer design needs.

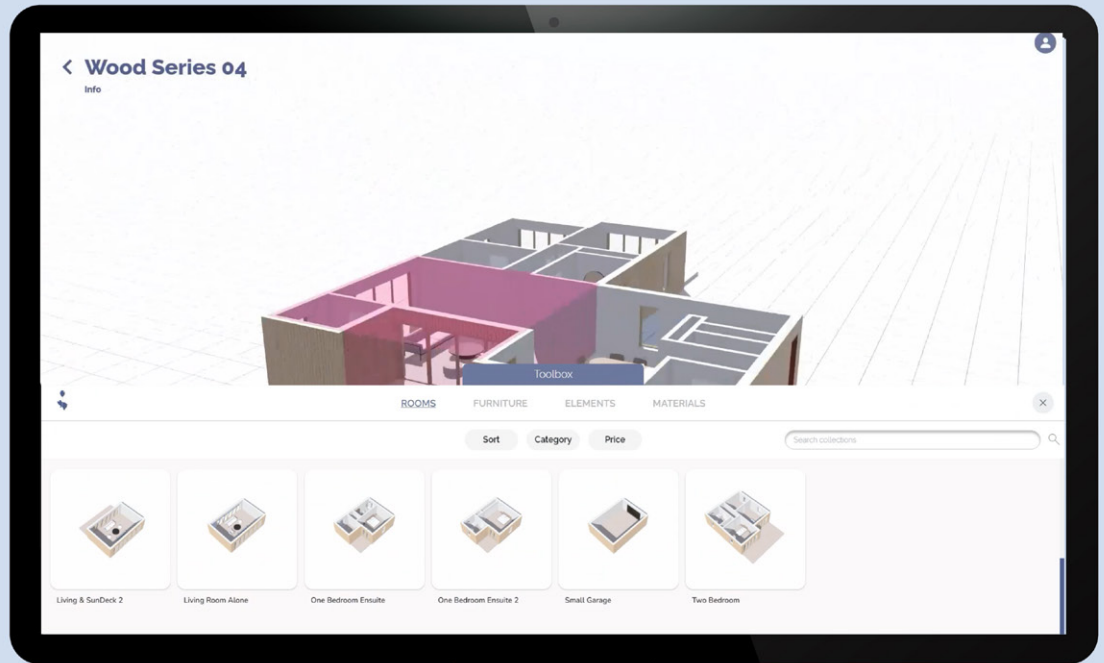
Company: Design With Frank

Lead Designers: Chloe Fan & Gabriel Munnich

## DESIGN HOME WITH BLOCKS

Good design for all

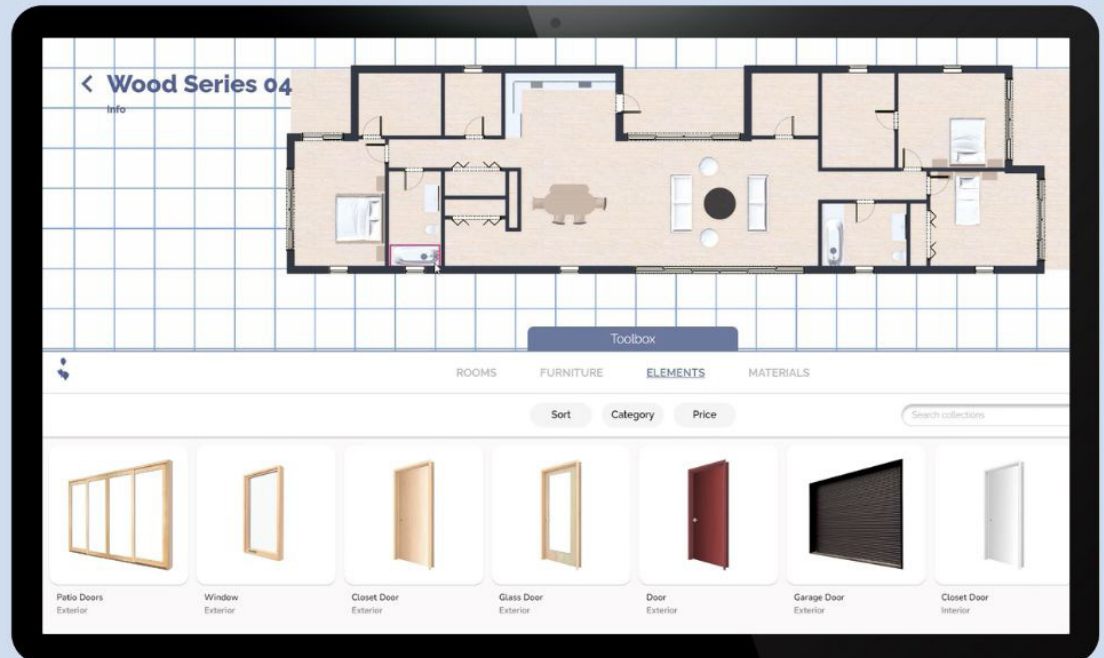
- Design a home is as easy as drag and drop.
- Smart block can configure doors and windows.
- Each blocks embed with data for building materials and furniture



## SOURCING WITH THE RIGHT DATA

Good design for all

- Each product is linked to the manufacturer's data.
- Design and source at the same time.
- Quantities and cost estimate are automatically calculated





# Karl Yin

## *Construction Product of the Year*



### Could you tell us a little about your professional journey?

In 2010 I was a ceramic student in Jingdezhen, China's ceramic arts and manufacturing center. Everywhere I went in town, the waste materials from clay manufacture could be seen in huge piles along with the domestic garbage. As a designer myself working with clay I also produced a lot of waste. I began searching for ways to help solve this problem. As a graduate student a few years later at Central St Martins in England, I made this issue the topic of my research and explored methods of converting recycled ceramics into new strong and sustainable materials. After returning to China, Caroline Cheng and I started Yi Design and quickly established a design lab and small run factory. We reached out to many people to gather materials to design process and offer to the building industry.

### YiBrick contains over 90% recycled ceramic, can you explain us the challenges faced by the ceramic industry in China?

China produces 18 million tons of ceramic waste annually and most of it is usually illegally dumped or buried. Our main challenge and goal have been collecting the waste and recycling it at the same rate as they are produced. At present, making building products such as bricks and tiles with this material is a big part of the solution.

### What was the initial idea of YiBrick? Can you please share more on the production process of YiBrick?

500 sponge cities are planned for China, and part of the con-

cept of sponge cities is using a permeable brick to absorb the rainwater and utilize it, rather than allowing it all to flow into sewage. We created a porous brick (YiBrick) using ceramic waste materials. The process has great promise of significantly improving the environment through recycling ceramic waste. We crush and remanufacture these particles as raw materials. The binder we invented makes the remanufacture possible without the need for cement, glue and other non-environmentally friendly substances. Currently, YiBrick permeable bricks have reached a high recycling rate of 97+%. And this adhesive allows our products to be recycled again, making it a circular product.

From the beginning we apply the SDGs to the setting up of our lab and factory, we hope to set the standard for this industry in the future..

### How are you distributing? Is YiBrick available worldwide?

We are completely open to market needs outside China, and there are already many overseas clients who are paying attention to or want to use our products. Top architectural firms such as MVRDV and OMA are interested in our materials. Interested parties can directly contact us through email. We are working on creating a sales and marketing team to distribute the product worldwide.

Having said that, we hope to work with local ceramic industries around the world so that transportation carbon footprint can be lowered and we can also help take care of the ceramic waste in their area.

### What is your annual production and what support do you need to expand?

Our production is in the first phase of expansion, reaching 450,000-500,000 square meters per year in 2023. We will consume more than 80,000-100,000 tons of ceramic waste per year on average. We currently need capital to increase production capacity and lower our price point.

### Can you please share with us what winning the "Construction Product Design of the Year" prize means to you?

The BLT Built Award has raised awareness of the importance

of sustainable practices in building and construction. Our material made from 97+% recycled ceramics is a strong, beautiful, and sustainable product. By receiving BLT Built Award, we at Yi Design are proud to raise awareness of ceramics recycling and its critical role in the planning and design of modern architectural projects.

**What are you working on at the moment, and do you have any upcoming project or upgrade that you're able to tell us about?**

Currently, we are completing the first manufacturing model for a ceramic production area in Jingdezhen. The model will expand to the rest of the country, and we hope the world, where there are ceramic production areas to help the ceramic industry form a closed loop, zero pollution and waste, and 100% recycled and circular products.

We are improving our products as well as researching into including other waste. We hope to design beautiful building materials and be able to reach out to all those who care about the environment. We also want more variety of products that could be used in other industries such as art and product design.

**Lastly, what can we wish you for the future?**

The realization of our dream through recycling ceramic waste, impact our environment and help to establish sustainability in the field of building design.



*YiBrick contains over 90% recycled ceramic, locally invented and made in China, where 18 million tons of non-degradable ceramic waste are produced every year. It is a permeable brick that can be used as pavement for sponge cities, improves the ecological environment and biodiversity, alleviating waterlogging problems, water resources shortage, and urban heat island effect.*

*The design is to solve the problem of ceramic waste management and research the possibilities of creating 100% recycled ceramic materials, to produce in large scale quantity to take care of all the wastes, and to promote the idea of regenerating recycled ceramics.*

*Company: Yi Design Company Limited*

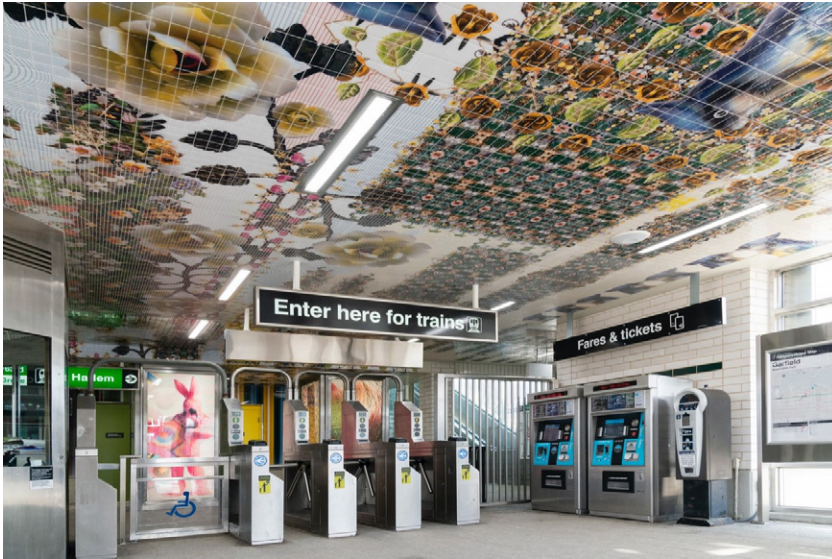
*Lead Designers: Yi Yin*

*Photo Credit: Yi Design Company Limited*





# architectural design



## CTA Garfield Gateway Station

**EXP, United States**

Lead Designer(s): Thomas Hoepf

**Winner in Bridges and Public Infrastructure**

Description: The Garfield Gateway Station was built for the 1892 World's Columbian Exposition. It includes two stationhouses – one non-active (historic), one active. Our renovation creates a gateway to the Washington Park neighborhood with the restoration/re-purposing of the historic station as community center, and renovation of the active station to serve 475,000 riders, while supporting the revitalization of the community.

The renovation included façade improvements, elevators, platform canopy extensions and enhanced architectural features integrating site-specific art by a renowned Chicago-based artist.

Photo Credit: Aron Gent, James Prinz



## The PLACE

**Tai Architect & Associate, Taiwan**

Lead Designer(s): Yutse Tai

**Winner in Commercial / Hospitality**

Description: Adjacent to the major green axis of Taichung City and facing the National Art Museum as well as the Cultural Center, the project site is not only located at where the old and new urban fabric transitions, but also at where the curvature of nature -brought about by the river- and the linearity of the manmade streets meet; where art and humanities of the museum and the Green Parkway communicate with each other through large-scale sculptures. In addition to responding to the spirit of the place, the architect also hopes to realize the client's desire to transform the hotel typology to an "a happy home as an artistic village", as housing is the main business service of the client.

Photo Credit: Tai Architect & Associate



## Cloud Valley Hub

**Studio Woodroffe Papa, United Kingdom**

Lead Designer(s): Dominic Papa, Jonathan Woodroffe

**Winner in Commercial**

Description: Cloud Valley Hub is a mixed-use scheme comprising meeting rooms, exhibition space, retail, offices and amenities.

Due to the challenging site conditions, the architects raised the meeting rooms and exhibitions spaces off the ground, connected by a ring of circulation around a central courtyard. On the ground floor, retail, restaurants and amenities are arranged as a series of pavilions that populate an urban landscape with gardens and plazas where people can meet and interact.

Photo Credit: Lei Sun



## Infinitus Plaza

**Zaha Hadid Architects, United Kingdom**

Lead Designer(s): Zaha Hadid Architects

**Winner in Commercial**

Description: Infinitus Plaza, the new global headquarters of Infinitus China, incorporates adaptive work environments designed to nurture connectivity, creativity and entrepreneurship.

Located adjacent to Feixiang Park metro station, Infinitus Plaza straddles the metro's sub-surface tunnel, dividing the headquarters into two interconnected buildings designed around central atria and courtyards as a series of infinite rings that enhance interaction and communication between all departments.

Photo Credit: Liang Xue, Felix Amiss



## BEEAH Headquarters

**Zaha Hadid Architects, United Kingdom**

Lead Designer(s): Zaha Hadid Architects

**Winner in Commercial**

Description: Powered by its solar array and equipped with next-generation technologies for operations at LEED Platinum standards, the new BEEAH Headquarters has been designed to achieve net-zero with future-ready technologies for minimal energy consumption.

Its design responds to its environment as a series of interconnecting 'dunes' orientated and shaped to optimize local climatic conditions. Embedded within its context of Sharjah's Al Sajaa desert, the design echoes the surrounding landscape shaped by prevailing winds into concave sand dunes and ridges that become convex when they intersect.

Photo Credit: Hufton+Crow



## Nabel Technology & Culture Experience Center

**Crox, China**

Lead Designer(s): C.R. Lin

**Winner in Commercial**

Description: The building is based on a square, and the space hopes to echo the spirit of 'Cong', 'Cong' is one of the 'six tools' recorded in Zhou Li, 'six tools' were the sacrifice ritual which is used by Liangzhu area to carry its own belief system. The inspiration of architectural configuration is spread out from 'the round sky and square earth', and the shape of the mountain, which is surrounded by the Half mountain and the Linping mountain, extracting to form a flowing curve and shape.

Photo Credit: Highlite Images, Threeimages



## Jenga Box

**Kris Lin International Design, China**

Lead Designer(s): Kris Lin

**Winner in Commercial**

Description: This is a commercial building for the community to meet the needs of the residents for daily life. Starting from site planning, the design integrates architecture, interior, landscape and lighting.

The site of the project is tight and especially narrow in the north. South of the site is the main road of the city, which is the main display surface of the architectural image. The facade along the street is designed to showcase the interior functions completely in the commercial facade of the building.

Photo Credit: KLID



## SWAYS Smart Ways to Work

**Agence d'Architecture A.Bechu & Associés, France**

Lead Designer(s): Anthony Bechu

**Winner in Commercial**

Description: SWAYS, is the 1st totally digital and eco-responsible building in France!

This offices transformation operation, which increased the surface area from 31,000 m<sup>2</sup> to 42,000 sqm is opening the former building to the city offering a new public place with a foodcourt, and creating biophilic place that is versatile, service-oriented and that improves quality of living. Here is the new generation of tertiary spaces with integrated AI technologies. In addition, a set of green terraces accessible to all employees have been installed on the roof.

Photo Credit: Pierre Perrin, Guillaume Guerin, Agence Bechu



## IKEA - the good neighbor in the city

**querkraft architects, Austria**

Lead Designer(s): querkraft architekten

**Winner in Commercial**

Description: this building makes an important contribution to the future of a living and ecological city and also to the future of retailing – an urban IKEA building which reflects the brand. It's environmentally sustainable, friendly, open, unconventional and informal.

a 4.5m deep sphere lays around the core like a shady shelf. certain sections of the sphere are accessible during off-hours of the store. it contains all the necessary elements - lifts, stairs or other serving elements.

Photo Credit: christina häusler / hertha hurnaus / querkraft



## Hitra office Building

**Hoobadesign Group, Iran**

Lead Designer(s): Hooman Balazadeh

**Winner in Commercial**

Description: Considering the mutual effect of the building and the city, causing a win-win relationship is inevitable, the Hitra Commercial-Office Building, located at the intersection of two main streets of Tehran is aimed toward increasing its interaction with the city while redefining the regulations.

The regulation indicates that the occupation area of the building should not exceed 60% of the land in Tehran. So, a central light well to provide light to the central units is mandatory.

Photo Credit: Parham Taghioff-Deed studio-khaterh Eshghi



## U.S. Consulate, Matamoros

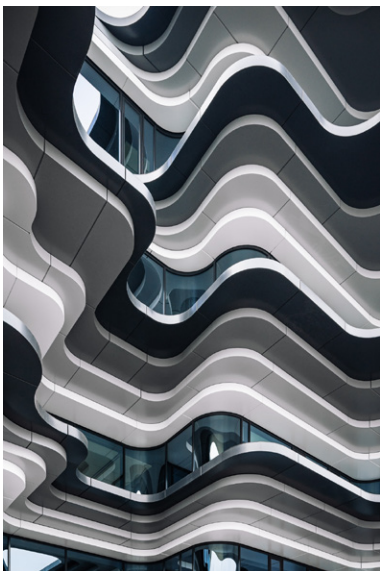
**Richárd | Kennedy Architects , United States**

Lead Designer(s): James Richárd, AIA

**Winner in Commercial / Sustainable and Energy Saving**

Description: The new Consulate General affirms the longstanding friendship and commitment between the United States and Mexico, designed to meet evolving security standards for diplomatic buildings while becoming an impactful, and welcoming part of the host city. With the completion of the new Consulate General, a palpable optimism and newfound sense of stability has led to a reinvigoration of the surrounding community fostered by its steadying presence. This is referred to as the "Embassy Effect".

Photo Credit: Gabe Border



## PVH Campus - European HQ Tommy Hilfiger & Calvin Klein

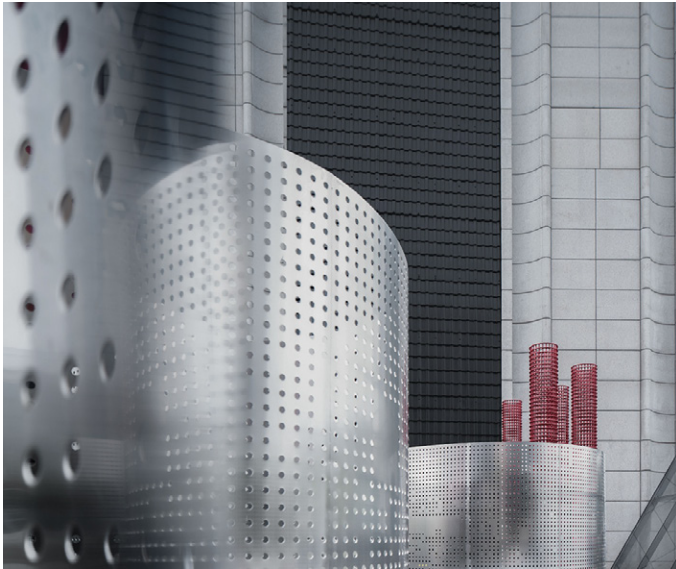
**MVSA Architects, Netherlands**

Lead Designer(s): Roberto Meyer

**Winner in Commercial**

Description: The European HQ for Calvin Klein & Tommy Hilfiger is the start of something big – namely, a 'campus' development for Calvin Klein's and Tommy Hilfiger's parent company, PVH. With European HQ for Calvin Klein & Tommy Hilfiger as the cornerstone of the PVH Campus, two more key buildings on the waterfront will complete an unusual three-in-one complex. Given their different focuses and functions, our approach stresses unity in diversity, with three overlapping water-related concepts.

Photo Credit: Patrick Coerse; Barwerd van der Plas; Mitchell van Eijk; Ronald Tilleman



## The Lost Garden

**Fununit Design, China**

Lead Designer(s): Eason Zhu

**Winner in Commercial**

Description: This case is for the design of the facade space of Chinese style mahogany furniture brand exhibition hall, through the development and accumulation of Ming and Qing dynasties, the mahogany furniture is formed worldwide famous Ming and Qing type mahogany furniture, and with regional culture integration to form local characteristics and schools, become China's traditional famous utensils spread to the present. The large number of classical mahogany furniture that left is bright type mahogany furniture and clear type mahogany furniture, form more fixed furniture pattern, kind, craft and practice, and thorough popular feeling.

Photo Credit: Aogvison Architectural Vision



## OYAKI FARM BY IROHADO

**Tono Mirai architects, Japan**

Lead Designer(s): Tono Mirai

**Winner in Commercial**

Description: A place with a life force that unites with nature.

A new factory, cafe, and direct sales store were built in the city of Nagano as a new development of the long-established oyaki shop "Iroha-do", which has been rooted in Shinshu since the Jomon period.

"Oyaki" is a baked "food" using vegetables and wheat that has been rooted in Shinshu since the Jomon period in Japan, and this architecture also aims to be a place where "the architecture that was born and returns to the earth" over a long time axis of tens of thousands of years—using lumber produced in the prefecture and surplus soil from construction sites.

Photo Credit: takeshi noguchi



## Central Ring Art Gallery

**Studio A+, China**

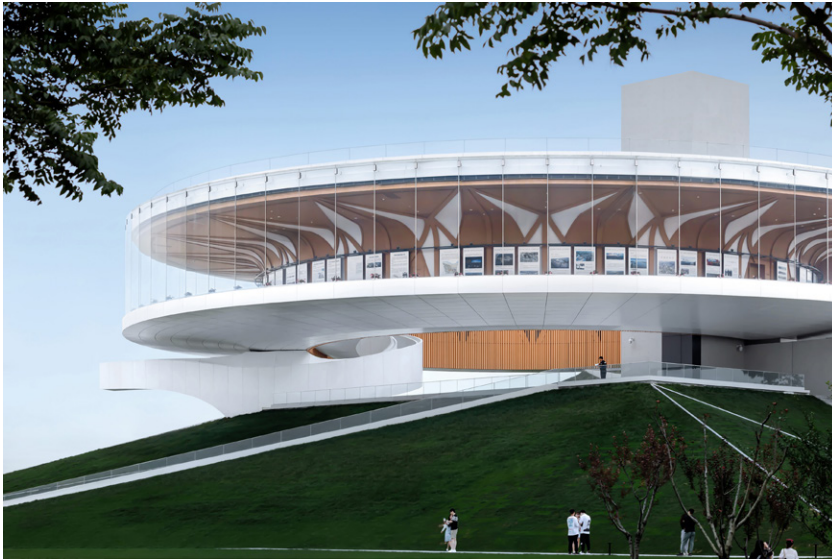
Lead Designer(s): Min Wang

**Winner in Cultural**

Description: This gallery is one of the first private art museums in HeFei, China. Located in the middle of a typical urban concrete jungle encompassed by high-rises, the campus is an urban retreat where art meets the public.

The building stands afloat, giving way to the landscape to be continuously extending throughout the site. The architecture also becomes part of the landscape, allowing opportunities for outdoor and semi-outdoor spaces to host art activities.

Photo Credit: Su Chen, Chun Fang



## City Crown — The Dragon Lake Public Art Center

**Studio A+, China**

Lead Designer(s): Min Wang

**Winner in Cultural**

Description: Located in the waterfront public park along the lake shore, the Center requires two major art exhibition spaces. One is with minimum daylighting for multimedia display; another with the possibility of sight-seeing. In order to limit its impact on the surroundings, we positioned the former on the ground floor and buried into a green mound. The major volume visible from city is the latter, in a form of a big 'ring', hovering above the land. The floating 'ring' expresses its truss work, celebrating the city's achievement.

Photo Credit: Su Chen, Chun Fang, Zhendong Jiang, Arch-exist photography



## Shanghai Gaojing Art Center

**Shanghai Urban Architecture Design Co.,Ltd., China**

Lead Designer(s): Cuiyang

**Winner in Cultural**

Description: The project is located at a crossroads in Shanghai, China. If you look at here, you will find that the pressure from cities and streets. The rate of regional green space is too low, and citizens lack space. The freight railway still in operation has a negative impact on the site and surrounding traffic. In this renovation project, the architects needed to redefine the place, reshape the building space, and create a more positive impact on the city.

Photo Credit: Liwei



## International City of Gastronomy And Wine

**Agence d'Architecture A. Bechu & Associés, France**

Lead Designer(s): Anthony Bechu

**Winner in Cultural**

Description: On 6.5 hectares, the CIGV defines a new gateway to the city of Dijon and its region. Located at the start of the renowned wine tasting route known as the Route des Grands Crus, the International City of Gastronomy in Dijon has open its doors in may 2022 on the site of a former hospital. Timeline-wise, the project predates the 2015 Unesco inscription, and in fact originates from the 'intangible cultural heritage' status awarded in 2010 to the gastronomic meal of the French.

Photo Credit: Fernando Javier Urquijo



## New Museum of Ethnography

**NAPUR Architect Ltd., Hungary**  
 Lead Designer(s): Marcel FERENCZ  
**Winner in Cultural**

Description: The new Museum of Ethnography welcomes visitors with its spectacular exhibitions. The incomparable building with its design evoking a pair of nearly embracing hillsides is distinguished by its unique facade decoration of almost half a million pixels presenting a contemporary adaptation of ethnographic motifs, as well as by its huge roof garden from the highest point of which a stunning panorama opens up. Sixty percent of the structure is under ground level, and thanks to the landscaped roof and the transparency of the sections over the ground, the new museum is adapted to its environment in its scale too.  
 Photo Credit: György PALKÓ; László INCZE



## Haimen Public Library

**PplusP Designers Limited, Hong Kong**  
 Lead Designer(s): Wesley Liu  
**Winner in Cultural**

Description: The Haimen Public Library is commissioned by a private client and it is a donation project to the local government upon completion. The architecture situates at the Country's National Class AAAA historical site "Lotus Park | Liang Hua Feng" at the shoreline of Guangdong Province, occupying 4800 square meters of land with 2800 square meters of architecture and interior space respectively.

There are two major limitations to the design of the architecture.  
 Photo Credit: YinXiang Photo



## Cruzen-Murray Academic Library

**Richärd | Kennedy Architects , United States**  
 Lead Designer(s): James Richärd, AIA  
**Winner in Cultural / Educational**

Description: True to the College of Idaho's vision for the space, the school's new Cruzen-Murray Library is a light and airy environment that gives students the sense of being surrounded by something much bigger than themselves. The library eschews the cloistered spaces for quiet learning found throughout traditional academic libraries and instead embraces a dynamic space that offers students ample opportunities for intellectual exchange. To allow for future adaptability due to shifting technology and academic needs, the team designed a flexible floor plan with access flooring to distribute ventilation, power, and data resources.  
 Photo Credit: Gabe Border



## East Las Vegas Library

**Richärd | Kennedy Architects , United States**

Lead Designer(s): James Richärd, AIA

**Winner in Cultural**

Description: The design of the library seeks to preserve and emphasize this distinctive landscape by integrating it into the gathering spaces that are central to the library's connection to the community. Sited delicately so as to avoid disturbing the landscape, the library's materials and form relate to the neighboring architecture. Undulating shade canopies intermixed with the existing pine trees throughout the plaza celebrate the main entry

Photo Credit: Eric Jamison



## Ute & William K. Bowes Jr. Center for Performing Arts, San Francisco Conservatory of Music

**Mark Cavagnero Associates, United States**

Lead Designer(s): Mark Cavagnero, Katy Hawkins, David Kwon

**Winner in Educational**

Description: The San Francisco Conservatory of Music's Bowes Center is a dynamic social and cultural destination that melds musical education, performance, and public experience. The new building is designed as a "vertical campus" that incorporates housing, dining, classrooms, rehearsal rooms, performances spaces, faculty offices, and a radio station under one roof. This rich program uses the latest in acoustical innovation and is consciously stacked in opposition to urban sprawl in a growing city.

Photo Credit: Tim Griffith Photography, Kyle Jeffers



## Roma Tre University Rectorate

**Mario Cucinella Architects, Italy**

Lead Designer(s): Mario Cucinella

**Winner in Educational**

Description: Three elliptical steel-framed towers, a glass-faced auditorium with a street frontage, a new public piazza and a raised "hanging garden" are the key distinguishing elements of the Rectorate of Roma Tre.

From the new public piazza, the three towers, with concrete cores, rise through apertures cut into the mezzanine level "hanging garden", which serves as a semi-public gathering space. The towers are faced with a trellis work of steel columns, glazed in parts, open in others.

Photo Credit: Moreno Maggi



## Reinoldi Comprehensive School

**SSP AG, Germany**

Lead Designer(s): Thomas Schmidt

**Winner in Educational**

Description: The change in school pedagogy and the reinterpretation of teaching methods prompted the city of Dortmund to examine the location and the main building of the Reinoldi comprehensive school, which had been expanded in several sections but was getting on in years, for its future viability. The analysis recommended a new building.

The U-shaped building is invitingly positioned towards the schoolyard, but was set back from the street on the rear part of the school campus.

Photo Credit: Detlef Podehl



## The Learning and Sports Center

**General Architecture Collaborative, United States**

Lead Designer(s): General Architecture Collaborative

**Winner in Educational**

Description: The Learning and Sports Center is located among the rolling hills of rural Masoro in Rwanda where nonprofit design firm has been working for the past 14 years. The center includes a library, classrooms, IT education rooms, exercise spaces, community teaching gardens, outdoor seating, a basketball court and soccer field, all of which are accessible to the community members free of charge.

During the construction period, we hired 390 builders from the surrounding neighborhoods, 54% of whom were women.

Photo Credit: Katie Garner



## ASARI African Sustainable Agriculture Research Institute

**Agence d'Architecture A. Bechu & Associés, France**

Lead Designer(s): Anthony Bechu

**Winner in Educational**

Description: ASARI is a priority project for Morocco. Supported by OCP, it aims to promote the economic and social development of the region. The technopole is made up of various complementary components all dedicated to research: work spaces, laboratories and classrooms. The research centre aims to position itself as a driver of change, proposing a respectful, intelligent and human conception of the site and its surroundings. Our architecture is based on the potential of the site.

Photo Credit: Fabio Mantovani



## The Hamlin School

**Mark Cavagnero Associates, United States**

Lead Designer(s): Mark Cavagnero

**Winner in Educational**

Description: The Hamlin School has focused on their mission of educating girls to “meet the challenges of their time” for over 127 years. The campus was comprised of three separate buildings stepping 65’ down a steep hillside, creating profound circulation challenges.

The three disconnected buildings, each with its own elevator and stairs, were constructed during three different eras and were not designed to support the school’s modern pedagogy. A 40’ high retaining wall in the center of campus created a barrier between the middle school and the lower school, fundamentally dividing the campus.

Photo Credit: Mike Kelley



## A New Urban Anchor Linking History and Education: The Art Education Center of Nantong High School

**Architectural Design and Theory Research Center of Southeast University, China**

Lead Designer(s): JIANG Nan, YUAN Weijun, REN Xiaobing

**Winner in Educational**

Description: This project is located in a century-old high school on the north side of Hao River Scenic Area in Nantong Old Town. Adjacent to existing buildings on three sides, the volume and height of the site are limited, and the functional requirements of the Center for Art Education are relatively complicated. The building is a transition point between the historical context and the current campus culture. For this reason, the design team aimed to rethink the relationship between old and new through the process of “abstraction – combination – adjustment”.

Photo Credit: CHEN Hao, JIANG Nan



## University of Washington, Life Sciences Building

**Perkins&Will, United States**

Lead Designer(s): Anthony Gianopoulos, Managing Principal & Andrew Clinch, Project Designer/Manager

**Winner in Educational**

Description: The Department of Biology at the University of Washington (UW) sees over one third of all students enrolled at UW and is the largest STEM program in the state. In order to meet their growing demand, the 207,000 square foot Life Sciences Building (LSB) embodies three core concepts—Science is a Gateway, Connections, and Engagement—enhancing the building’s relation to the campus, students, faculty, and environment. With these core values in mind, we designed a flexible, collaborative, and highly sustainable building.

Photo Credit: Kevin Scott, Nic Lehoux



## Boston University Joan & Edgar Booth Theatre and College of Fine Arts Production Center

**Elkus Manfredi Architects, United States**  
Lead Designer(s): Ross Cameron, RIAS, RIBA  
**Winner in Educational**

Description: Located on Boston's bustling Commonwealth Avenue, this theater center unifies Boston University's previously scattered theatre arts program and strengthens its presence on the University's campus. A 21st-century theatre/learning laboratory, the 75,000-square-foot center is a story of architectural layers, innovative building materials, and creative synergy.

The project brief was to unify the theatre arts program while creating a state-of-the-art learning environment to educate the next generation of theatre artists and engage audiences in an immersive experience.

Photo Credit: Robert Benson & Eric Laignel



## Midea Heyou International Hospital

**Bai Design International, China**  
Lead Designer(s): Yu Bai

**Winner in Healthcare and Wellness Facilities**

Description: Heyou International Hospital will serve as a comprehensive medical center, shifting from a traditional treatment-led to a health-led approach, to be accessible to the whole community, applicable to the whole life cycle and cover the whole medical spectrum. The masterplan adopts the concept of "garden hospital", allowing the medical use and function to fully integrate with natural environment. Inspired by the ancient Lingnan waterways townscape with its crisscrossing rivers, the landscape axes are introduced to open up view corridors, along which medical spaces can have a visual interaction with nature, thus to create a healing environment, and the medical complex as a whole a graceful health park that can be experienced.



## Kia Lab

**Davood Boroojeni Office, Iran**  
Lead Designer(s): Davood Boroojeni, Saba Ammari, Hamed Kalateh

**Winner in Healthcare and Wellness Facilities**

Description: Building-City  
In designing the Kia Lab Project, it has been tried to create an interaction between the building and the city by adding a new application to the building, which has the role of an urban hangout and to make the border between city and building invisible. In this way, the user is faced with a structure that is both a building and a city, and the border between the two is not easily recognizable. In the Kia Lab, people can get to the first floor of the building through the stairs placed in the passage.

Photo Credit: Parham Taghioff



## Emory Musculoskeletal Institute

**HKS Architects, United States**

Lead Designer(s): HKS Architects

**Winner in Healthcare and Wellness Facilities**

Description: Before a patient even walks through the door, they are on a design-focused journey exploring the beauty of the human body's bones and muscles. From the outside, the facade invokes a feeling of fluidity and motion with very few hard angles. The stunning research center on the sixth floor however, purposefully juts out of the otherwise curvilinear facade, representing looking toward the future in both research breakthroughs and patient outcomes.

Inside the building, nearly all design elements are inspired by features of the human anatomy, including patterns on the floor and ceilings that resemble muscle and tendon movement, glass patterned to look like nerves, elevator interiors that display artistic versions of bone cross-sections, and wood components designed with the hard striation of bone in mind.

Photo Credit: Jonathan Hillyer Photography



## European Center of Jewish scholarship

**SSP Rüttnick Architekten, Germany**

Lead Designer(s): Elisabeth Rüttnick

**Winner in Heritage**

Description: At the Sanssouci Palace Park, the North Gate Building and the adjoining former Orangery to the west were converted and refurbished. Potsdam's first synagogue is located in the center of the listed ensemble. A special lighting design gives the synagogue a unique look, a Torah with a 7-arms menorah in light lines engraved. And a Bimah with lighted fiber concrete as the eternal light. The Abraham Geiger College and Zacharias Frankel College are located in the North Gate Building, and the School of Jewish Theology is located in the former Orangery – together they form the new European Center for Jewish Scholarship.

Photo Credit: Dimitri Bohl, Kevin Fuchs, Dr. Bauers, Maro Niemann, SSP Rüttnick Architekten



## FORESTIS

**ASAGGIO GmbH, Italy**

Lead Designer(s): ASAGGIO GmbH

**Winner in Hospitality**

Description: FORESTIS with 62 suites and rooms on the Plose mountain above Bressanone is situated at 1,800 metres above sea level and at eye level with the Dolomites. The four causal elements, spring water, air, sun and climate, are represented by the interior design and architecture with the use of four natural materials. Careful handling of the landscape was the premise for the construction of three tree-like towers that let nature take the lead through a clean and linear architectural language.

Photo Credit: FORESTIS



## Pytharia 5\* Hotel & Bungalows Resort in Crete

**Yanniotis & Associates, Alexis Chortogiannis and Stratis Papastratis, Greece**

Lead Designer(s): Constantinos Yanniotis, Alexis Chortogiannis, Stratis Papastratis

### Winner in Hospitality

Description: This project is about a 5\* Hotel & Bungalows Resort located in North Crete, with an unobstructed northern view of the Sea overlooking the Aegean Pelagos. The National Highway crossing the north front of the plot poses serious privacy and noise pollution issues that needed to be addressed.

“Pytharia” is a Greek word used to describe the large Terracotta Containers used to store food or wine in ancient times. The Pythari concept is the core idea that shapes the design of the whole complex.

Photo Credit: Vasilis Symeonidis, Architect NTUA



## Immersion

**T.E&C Architects & Associates, Taiwan**

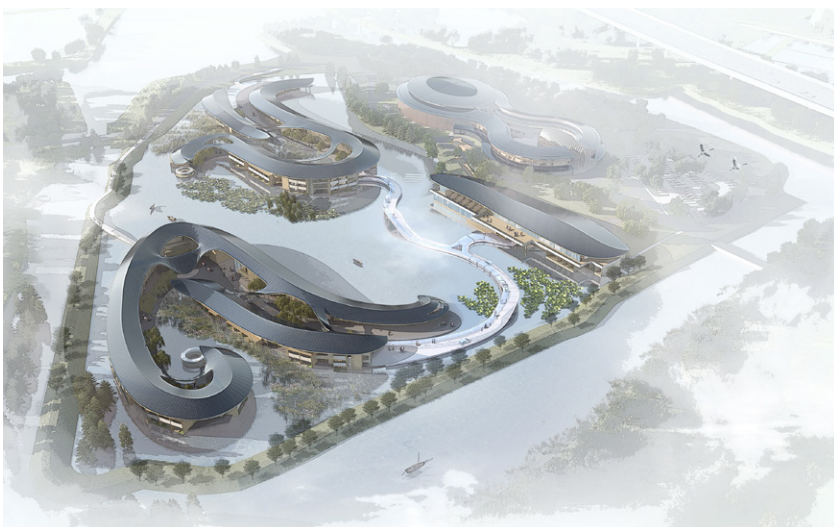
Lead Designer(s): Wen Tong Hsieh

### Winner in Hospitality

Description: The project is deeply inspired by the richness of the local culture and nature. The overall color palette applied on the buildings appears to have a sense of warmth and luminosity. With white and gray, the designer manages to paint out the local identity through the design.

Inspired firstly by the local oyster farming industry, the basic color of white represents the oyster shell. With each building and outdoor spaces such as a semi-open corridor, landscape patio, swimming pool, the overall traffic flow is connected and immersed with the environment.

Photo Credit: Yao Cheng Chen



## Silk on water, ink on lake — — Garrya Hotel

**Studio A+, China**

Lead Designer(s): Min Wang

### Winner in Hospitality

Description: The hotel is located in a city with the traditional water town area at the south of Yangzi River. It is cradleland of ancient silk and writing brush for Chinese calligraphy.

The site, surrounded by channels and rivers, is to be a utopia where the water town lifestyle is reinvented.

We turn the site into a ‘blank’ water area. Land and water are redefined. A double transportation system (land & water routes), which is the key feature of the water town, is planned to ensure guests can access rooms by both, and each room on the water street level has its own wharf.



## Hyatt Place London City East

**Dexter Moren Associates, United Kingdom**

Lead Designer(s): Freya Jones

### Winner in Hospitality

Description: The 11,700 sqm, 280-key Hyatt Place London City East, features an all-day dining and lounge space, as well as a ninth-floor bar and terrace with views of the City and Canary Wharf. The lobby and restaurant area are located on the lower ground floor alongside an orangery, courtyard, gym, and a grab-and-go food market. The guestrooms themselves include a variety of standard and accessible rooms, spread across 10 floors.

The site, located on Whitechapel High Street in East London, was previously home to a seven-storey office building built in the early 1980s.

Photo Credit: Renny Whitehead, SCOPIC productions



## The Marquee

**ALTER EGO Project Group, Italy**

Lead Designer(s): ALTER EGO Project Group

### Winner in Hospitality

Description: The ultra-modern seven-star boutique MARQUEE hotel with 40 villas is an embodiment of a true oasis. Each villa offers a private patio, a swimming pool and a stunning view of the desert and canyons. Here privacy goes together with comfortable relaxation, poetic images are embellished by innovative technologies, and state-of-art architecture addresses the challenging climatic conditions. Sustainability is at the core of this project. The hotel is powered by an off-grid solar station and equipped with cutting-edge technologies to achieve net-zero emissions and minimal energy consumption.



## The Rock Cabins

**Hello Wood Zrt., Hungary**

Lead Designer(s): Péter Pozsár, Tamás Fülöp, András Huszár

### Winner in Hospitality

Description: The project was built in Csóromföldre, a former farmstead in Hungary that has been the site of architectural education programs and festivals previously, providing a mystical atmosphere. Our aim was to build a cabin resort that blends in perfectly with the landscape of fields and hills. The organic shape of the cabins create a link between the natural and the built environment. The use of wood for the houses suggests closeness to nature, reminiscent of the materials that were always present in traditional architecture in this area.

Photo Credit: Máté Lakos



## Hon Thom Island

**10 Design, Hong Kong**

Lead Designer(s): José Cláudio Silva, Peter Barrett

**Winner in Hospitality**

Description: Hon Thom Island is an iconic integrated resort and hospitality destination along the vibrant Bai Trao Beach in Phu Quoc, Vietnam. Located in the northwest of Hon Thom Island, the resort masterplan unfolds through 1km of coastal frontage and across 20ha of premium beach and waterfront. The scheme will enhance connectivity to the wider archipelago through private and VIP marinas, a public jetty and helipad, in addition to a cable car connecting the island to Phu Quoc.

Photo Credit: 10 Design



## TIN INN - simply stay

**Containerwerk eins GmbH, Germany**

Lead Designer(s): Ivan Mallinowski / Michael Haiser / Nico Sauerland

**Winner in Hospitality**

Description: Efficient, digital and absolutely sustainable. It is the essence of all our experience in container architecture. A building tailored to the requirements of modern overnight accommodation. The special insulation and large window areas create a sense of space with high-quality generosity in the container modules. The modularity of the building is reflected in the interior of the rooms. Intelligent furniture with multiple functions provides plenty of space.

Photo Credit: Containerwerk eins GmbH



## TREE LIFE, TULUM

**Dna Barcelona Architects, Spain**

Lead Designer(s): Aryanour Djalali

**Winner in Hospitality**

Description: Life Tree, Tulum represents an project of 10 apartments and 20 hotel lounges, developed for the Environment of great tourist and landscape value, in the Yucatan region next to the Atlantic Ocean. Complex of 10 villas, surrounded by vegetation and nature and provided with unique sensations, all of them with lock off on the upper floor. The Ground floor is developed for the location of many natural elements and community spaces for relaxation and enjoyment of the nature of the place and offers Natural pools, Gym Club, SPA, Restaurant and Lounge Bar.



## Motto by Hilton New York City Chelsea

**Stonehill Taylor, United States**

Lead Designer(s): Neill Parker- Principal

**Winner in Hospitality**

Description: Located in the heart of New York City the hotel is a neighborhood spot for out-of-towners and locals. As the brand's first ground up property, it has set the standards for those to come.

The hotel stands out with its dramatic entrance and enhanced arrival experience. As visitors approach the property, theatrical flourishes and the day/night, yin/yang essence begins with soaring white beams. Connecting to the interiors and showcasing a contemporary aesthetic with a slight nod to Art Deco.

Photo Credit: Joe Thomas



## Club Med Lijiang

**Shanghai Jund Architects Co., Ltd., China**

Lead Designer(s): Lei Kang

**Winner in Hospitality**

Description: With magnificent snow-capped mountains and clean lakes and rivers, Lijiang, a dynamic city full of flowers and encounters, is glittering in the sunshine at latitude 26.8°N, where enables numerous urban "migratory birds" make their dream of a pleasant life come true.

Located in this beautiful city - Lijiang, Lijiang CM is the first CM operated by Fosun Property, the first independently constructed project of the Premier Series, as well as the only hotel located in the Baisha Cultural Preservation Area.

Photo Credit: Shanghai JUND Architects Co., Ltd.



## LES SAIGNOLES THE NEW MANUFACTURE DE HAUTE HORLOGERIE

**Kunik de Morsier Architectes, Switzerland**

Lead Designer(s): Guillaume de Morsier

**Winner in Industrial**

Description: Built horizontally on the hill, the Manufacture fits discreetly into this landscape resulting from the folds of the Jura. The whole blends into the geography of the Jura and the astral time. The contours and materials are chosen to intensify the user's or visitor's experience of the environment, natural light and the movement of the sun.

The Manufacture houses all the programs necessary for the manufacture of the most complicated watch movements: research and development, machining, decoration, as-sembly and administration.

Photo Credit: Iwan Baan



## RWTH Aachen WZL new building hall

**SSP AG, Germany**

Lead Designer(s): Stefan Bielefeld

**Winner in Industrial**

Description: After the loss of the machine tool hall of RWTH Aachen due to a fire, SSP was awarded the contract for the integral planning of the construction project. A new hall was to be built and the facade of the existing building was to be renewed.

The new hall comprises about 3000 m<sup>2</sup> of floor space distributed over three hall bays. A 2-story building supplemented with building services and ancillary rooms.

The supporting structure consists of a steel framework and precast reinforced concrete elements.

Photo Credit: Jörg Hempel



## The Story of Wine: ShaZhou YouHuang Cultural Park

**DSI by Senem Cennetoglu, China**

Lead Designer(s): Senem Cennetoglu

**Winner in Industrial**

Description: Only an hour and a half away from Shanghai, Zhangjiagang is situated along the Yangtze river. The land is fertile with large spans of rice paddies as far as the eye can see, which provides the basic ingredients for the production of yellow wine.

The project is located on a plot that is adjacent to the existing Shazhou Youhuang factory complex. The new layout includes facilities that are actively serving the existing production while becoming a landmark to the city.

Photo Credit: Aaron&Rex



## University Refectory in Cergy

**GRAAL ARCHITECTURE SARL, France**

Lead Designer(s): Carlo Grispello & Nadine Lebeau

**Winner in Institutional**

Description: Located at the heart of the park of the Cergy prefecture, the restructuring and extension of the university refectory is an opportunity to re-establish a link with a large-scale landscaped public space while adapting it to current programming requirements.

A kiosk in a mixed wood and steel structure is skillfully placed on the roof of the original refectory, creating an element in dialogue with the urban and landscape dimensions. Designed as a light pavilion on a topographic mineral base, the kiosk becomes an element of unification between the different parts of the refectory, allowing it to assert its presence while ensuring the architectural coherence of the whole.

Photo Credit: Clément Guillaume



## CNESST Head Office

**Coarchitecture | LEMAYMICHAUD, Canada**

Lead Designer(s): César Herrera

**Winner in Institutional**

Description: Located in the d'Estimaerville eco-district, the CNESST head office plays a pivotal role in the sector's revitalization strategy. With a surface area of 34,500 m<sup>2</sup> and an indoor parking lot with 640 spots, the building can welcome more than 1,800 employees. Its work and lounge spaces are structured around an eight-story atrium.

This atrium is the focal point of the architectural concept: a place to gather, socialize and recharge. It features a triangulated wooden structure and a floor-to-ceiling glass façade.

Photo Credit: Stéphane Groleau

## Patras Waterfront - Achaia Prefecture, Greece

**Ma\_A - Mediterranean architecture Atelier (Greece) + BMT Studio, Greece**

Lead Designer(s): Alexios Tzompanakis

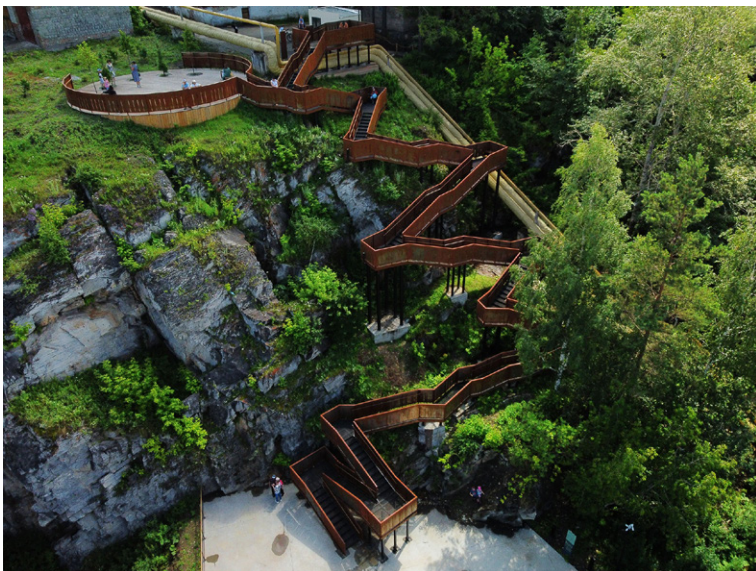
**Winner in Landscape**

Description: Linear connections and transverse crossings

The project is based on the interpretation of Patras' urban morphology dynamics. Their analysis shows that the urban fabric of the city is a field of "enclaves" and "microcosms" which define different urban units, which blur from one into the other. There are no clear boundaries, but zones of transition and osmosis between microcosms.

Therefore, the main object of the strategy is the creation of an "interface" between the city and the port as a unifying condition that connects local specificities:

-In the "old port" the memory of the city and the need to reformulate the urban identity are called to coexist.



## Step Beyond the Horizon

**Orchestra Design Studio, France**

Lead Designer(s): Edouard Moreau

**Winner in Landscape**

Description: The Metal Ribbon Staircase is an outdoor staircase, which links a climbing spot to a viewing platform 20m above at the top of a big rock. It provides a new connection between the lower and upper part of the new park of the city of Beloretsk in the South Ural. We choose corten and metal to create a "monolith effect" contrasting with the intricacy of geological lines and the wide color palette of the rocks. The staircase acts as a "ribbon" which dynamically envelops the climbing rock, providing different viewpoints along the way.

Photo Credit: Valeev Zagir, Tretyakov Vladislav



## Nantong Golden Eagle World

**Lead8, Hong Kong**

Lead Designer(s): Lead8

**Winner in Mixed-Use building**

Description: Nantong Golden Eagle World is an integrated and visionary mixed-use project that seeks to establish a compelling destination and new contemporary world-class city centre in Nantong.

Located in the heart of the new CBD of Nantong, the site comprises an incredible line-up of waterfront retail, F&B streets, super high-rise towers, premium office, hotel and serviced apartments.

The team drew inspiration from the surroundings, celebrating waterscapes throughout the project.

Photo Credit: Lead8



## SUNAC MOGAN VALLEY -- ZHULINLI

**Zoom Design, China**

Lead Designer(s): Xianting Pan

**Winner in Mixed-Use building**

Description: Being harmonious with nature, the design is guided by original condition with spatial aesthetic. The idea of living in harmony with life that the designer bears is based on the harmony between people and others, nature, space and life, a kind of pure power without the limit of form or idea. Therefore, the designer is committed to build this coffee shop as a poetic space and homey residence. This project includes water bar, dining area, deck and other areas, providing infinite possibilities for residents' daily life.

Photo Credit: bmStudio, Yan Ming



## Guangzhou Financial Plaza

**International Design Center - GDAD, China**

Lead Designer(s): Chenghan Xu, Manying Hu, Tianhang Zou, Qiancheng Ma

**Winner in Mixed-Use building**

Description: Guangzhou Financial Plaza is located in the starting area of the center, to the west of Guangzhou-Foshan East Ring Financial Center Station. It is designed into a triangular plot, with a land area of about 16,730 square meters and an overall floorage of 78,951 square meters. The project makes full use of the ground and underground spaces, comprehensively coordinates the use of the functions of intercity traffic, check-in areas, subways, buses, taxis, trams, scooters, P+R social parking, bicycles, and regional supporting facilities, to achieve the "zero transfer" goal, and promote the organic integration of the traffic function and urban service function.

## Zhangzhou City Museum, Art Museum and Planning Exhibition Hall Project

**China Institute of Building Standard Design&Research Co.,Ltd.; Eco Build + Design, China**

Lead Designer(s): Yihang Zheng , Donghua Zhang

### Winner in Mixed-Use building

Description: The project of Zhangzhou City Museum, Art Museum and Planning Exhibition Hall is located in the city of Zhangzhou, Fujian Province, with an overall floorage of about 93,716.76 sqm. Through integrating Chinese traditional culture and Zhangzhou regional culture, and incorporating the modern architectural design language and expression method, this project creates a tranquil ecological settlement in the bustling urban space and historical space and time with integrated design of planning, landscape and architecture.



## Torre Helix

**CRAFT Arquitectos, Mexico**

Lead Designer(s): Alan Rahmane

### Winner in Mixed-Use building

Description: The project located in one of the most important financial arteries of the city of Guadalajara, has 18 levels of corporate offices and two commercial levels. In response to its urban context, the building proposes a commercial floor surrounded by public space that absorbs the existing unevenness between the streets, unfolds creating the access ramps to the building and allows the transition for the different uses. Its volumetry uniquely expresses its iconic will, but it is not only a formal desire.

Photo Credit: Apertura Arquitectónica



## Chengdu Co-Innovation and Cooperation Center

**Laguarda.Low Architects, United States** Lead Designer(s): Pablo Laguarda, FAIA **Winner in Mixed-Use building**

Description: Emerging from the rigid urban grid of the neighboring district, the project is a striking composition of multiple layers applied to a seemingly endless spiral. The ascending and descending halves of the spiral dance around the block, encircling the site with sensuous undulating forms. The two opposing crescents float around an elliptical oasis like Koi fish passing in a pond. The urban garden created within the crescents is contrasted to surrounding high-rise towers in a whimsical nod to the orthogonal grid in which it resides.

Photo Credit: Arch-Exist Photography, Nick Kuratnik



## Chateau Lynch-Bages Winery

**PEI Architects, United States**

Lead Designer(s): Chien Chung Pei

**Winner in Others architectural projects**

Description: A winery with its origins dating back to 1749 was recently redesigned as a new and dramatic 150,700 ft<sup>2</sup> estate at the Chateau's historical hamlet. Previously, the winery was an ensemble of warehouse buildings clustered within the picturesque French winemaker village. The newly designed multi-use building maintains the same feeling, however, it now houses all wine making operations under one roof: the vinification, the wine barrel cellar, and the office headquarters.

Photo Credit: Gabriel Guibert, Siegfried Ressel, Chateau Lynch Bages Winery



## Cable Car Stations Olang 1 + 2 Plan de Corones-Kronplatz

**studio schlotthauer matthiessen -  
architecturemade, Germany**

Lead Designer(s): Cornelius Schlotthauer +  
Mirjam Matthiessen

**Winner in Recreational**

Description: Lightweight roofs on Alp peaks  
With a distinctive roof made from translucent ETFE-foil shaped like a wave, the project brings a nautical whiff of the coastline to the Alps of the Pusteria-Pustertal valley: a design brimming with movement and transparency.

The three buildings – valley, mid-slope and peak station – received a new outer shell, each with two independent segments that complement and extend the existing buildings and allow for entirely new ways to use the space available.

Photo Credit: Harald Wisthaler KG Photographie



## Holland Casino Venlo

**MVSA Architects, Netherlands**

Lead Designer(s): Roberto Meyer

**Winner in Recreational**

Description: The spectacular design for a flower-shaped, sculptural building is the new landmark for the City of Venlo. Behind its show-stopping good looks, it embodies two major design principles: sustainability, and optimizing the user experience. From a distance, this unique building is highly visible, appearing as a kind of welcoming gateway to the Netherlands. The colour-changing interactive façade provides a breath-taking light show during the darker hours, while emphasizing the casino's flower-shaped structure.

Photo Credit: Corné Clemens, Laurens Eggen, Jan Maarten Lieverdink, Barwerd van der Plas



## ROADSHOW CENTER OF XINGLONG LAKE

**TEKTONN ARCHITECTS, China**

Lead Designer(s): Xiang Wang

**Winner in Recreational**

Description: The Roadshow Centre is located in the largest open area of the city, adjacent to the lakeshore, with a unique view up to 3km. The building is fully integrated into the landscape, with the exposed volume twisting slightly to form a modest viewing platform for the park side, on the other side, a series of spaces for diverse public waterfront activities. The simple form of the building, with its rough sense of materiality, is seen from afar as if a beast in the lake suddenly leapt out of the water, frozen and integrated into the environment.

Photo Credit: Arch-Exist & MMCM Studio



## Thouars Tribune and Lockroom Project

**Thibaudeau Architecte, France**

Lead Designer(s): Thibaudeau Architecte

**Winner in Recreational**

Description: The demolition and then reconstruction of La Tribune, to which are added Locker rooms and storage rooms, were not without pitfalls: the program was reviewed with the architects to, within a very tight schedule and budget, carry out installations for three users. distinct, while meeting a strong security and anti-degradation need. If the pooling of functions guided the drawing of the plan, the strong idea that emerges is that of a work of modeling a compact volume by extrusions.

Photo Credit: Thibaudeau Architecte



## Weihe River Landscape Pavilion

**PLAT ASIA, China**

Lead Designer(s): Donghyun JUNG

**Winner in Recreational**

Description: The Weihe River Landscape Pavilion, located in a riverside park, served as a public toilet, landscape pavilion, and shop in a two-story building. Between walkways and woods, architects translated the traditional form into contemporary expression: extending the roof into the land, and making a triangle frame structure, then cutting the wall and rolling over the platform as a terrace, seats, planters, and ceilings, opening views from south to north, and timber grilles as the façade, penetrate airs freely.

Photo Credit: PLAT ASIA ndn lab



## F51

### Hollaway Studio, United Kingdom

Lead Designer(s): Hollaway Studio

#### Winner in Recreational

Description: Hollaway Studio has designed the world's first purpose-built multi-storey skatepark in Folkestone, as part of a major ongoing programme to regenerate the seaside town. Featuring three levels of high quality skateparks, boxing gym, climbing wall (the tallest in the south-east of England) and café space, this landmark building embeds extreme sports, normally banished to the outskirts, right in the heart of town. It is a central hub for youth culture, building confidence and providing independence through mobility.

Photo Credit: Hufton and Crowe Photography, Matt Rowe



### Santa Maria Goretti Church

#### Mario Cucinella Architects, Italy

Lead Designer(s): Mario Cucinella

#### Winner in Religious and Spiritual

Description: Solitary and monolithic, the Church dominates the pre-existing urban context. The monumental plan with an organic shape is inspired by the geometries of some of the most beautiful Baroque churches, such as the "Basilica of Sant'Andrea delle Fratte" and "al Quirinale", both in Rome, the Ghisilieri Oratory in Ferrara, the Church of "San Carlo alle Quattro Fontane" and the Church of "Sant'Ivo alla Sapienza" in Rome.

The main facade, which opens onto the new church square, is characterized by a few elements that define the main signs of the Christian tradition: the entrance portal and the cross.

Photo Credit: Duccio Malagamba



### Cathedral of the Holy Cross

#### Elkus Manfredi Architects, United States

Lead Designer(s): David P. Manfredi, FAIA, LEED AP

#### Winner in Religious and Spiritual

Description: Larger than Westminster Abbey and the largest Catholic church in New England, the Cathedral of the Holy Cross in Boston's South End was consecrated in 1875. The renovation of the Cathedral began with a grain of inspiration from Cardinal Sean O'Malley—stained-glass windows illuminated at night. The Cardinal asked designers to make the Cathedral a luminous beacon to the surrounding neighborhood and the greater Boston Catholic community.

Architects designed a comprehensive, unifying renovation to bring new life and light to Boston's Cathedral of the Holy Cross.

Photo Credit: Robert Benson & George Martell



## 'MOHO' Villas

**Enforma, Montenegro**

Lead Designer(s): Nikola Novakovic

**Winner in Residential**

Description: MOHO is a private complex consisting of three modern villas located in Kotor Bay in Montenegro. The illusion of a small settlement was created by breaking down the structure of the building into two or three separate spaces, with seven freely distributed structures, with varying roof pitches, thus the complex can be interpreted as a group form characterized by modern minimalism.

The architectural and urban concept of the complex was inspired by the immediate surroundings, heritage of the nearby coastal villages and towns, positioned in harmony with the environment.

Photo Credit: Milos Martinovic



## Haus am See

**Carlos Zwick Architekten BDA, Germany**

Lead Designer(s): Carlos Zwick

**Winner in Residential**

Description: 25 years after the fall of the Berlin Wall, a modern tree house on stilts was built on the historic lake property in Potsdam. Ancient trees, the water and nature preserved terraces determined the concept. Today the wooden house stands on 40 diagonal steel posts, with 10 individual foundations touching the imperial terraces in a respectful way.

The house integrates unobtrusively into the crowns of the age-old trees. Even the large maple that stood in the way of the house was left untouched and is now growing tall, right in the middle of the living room.

Photo Credit: José Campos



## Nam Villa

**A+ Architects, Viet Nam**

Lead Designer(s): Hoang Kha Vu

**Winner in Residential**

Description: The location of the project is in Thu Duc city - a new urban area of Ho Chi Minh City, VietNam with high construction density and crowded vehicles. Not only that, Nam Villa is located in the context of large houses close together and at the foot of the apartment building. Therefore, we focus on finding design solutions to increase the privacy of the building. Surrounding the house are the buffers of wooden bars and trees combined with the two walls on both sides to make the building more private, handling the view from the neighbor's house and the adjacent high-rise apartment block.

Photo Credit: Nguyen Trong Huan, Nguyen Long An



## Welsh Hillside Home

**Vale Consultancy (S.Eng), RPA (QS), WSP (M+E), United Kingdom**

Lead Designer(s): James Stroud

**Winner in Residential**

Description: Built into a rugged hillside overlooking the extensive natural coastline in South Wales, the innovative new-build family home is progressive in design and sympathetic to its rural surroundings. The home sits beneath towering pine trees, making extensive use of Kebony, a global leader in the production of sustainable wood, for its façade. Locally sourced Gwrhyd Pennant Stone is also used on exposed walls to blend naturally into the remote landscape.

Photo Credit: Charles Hosea



## The Earth House

**Art & Architecture Associates, India**

Lead Designer(s): Dharmesh Patel

**Winner in Residential**

Description: This is a markedly linear eco-friendly home, awash with natural light. 3000 sq. ft. accommodate 3 bedrooms. The layout is divided in two blocks, one with living areas and the other with bedroom spaces. Between the two sit the leisure components of the pool and a gazebo.

Gabions have been used as screens to provide privacy, the large linear volume of the boxes and the earth colors of the rocks within complementing both landscape and built form.

Photo Credit: Tejas Shah Photography



## Peloponnese Rural Residential House

**Architectural Studio Ivana Lukovic, Greece**

Lead Designer(s): Ivana Lukovic

**Winner in Residential**

Description: A plot overlooking the Gulf of Corinth, in a village of Kalamia, is a setting for a dwelling. The morphology of the place led to the decision of creating the house with humble, traditional stable-like appearance from the street side, while developing in a two-level construction from the garden.

Entrance level relates through the large openings to the outdoor observation platform for experiencing distant view of the sea. Additional windows created on the roof and both sides of the house improve natural light and ventilation, while communication with the garden is by cantilevered staircase.

Photo Credit: Athina Souli



## RO54

**Arshia Architects, United States**

Lead Designer(s): Arshia Mahmoodi

**Winner in Residential**

Description: Perched on a hilltop in the Bel Air neighborhood of Los Angeles, overlooking the Pacific Ocean and the Los Angeles basin, the project gently lands a dynamic building on top of a buried podium that replicates the natural topography that was once there before the area was subdivided for development. The project utilizes the split-level design to follow this topography uphill and to connect the floor plates with half-story connections.

This project engages an exercise in spatial relationships to accelerate the programs of the house.

Photo Credit: Paul Vu / Arshia Architects / Renee Parkhurst



## Zig Zag House

**Stukel Architecture, Australia**

Lead Designer(s): Daniel Beasley

**Winner in Residential**

Description: Zig Zag House presents an audacious conversation between the old and the new, with its unexpected location set within Sydney's eastern suburb of Kensington. The clients were returning to their old family home, desired to live in a unique setting that offered a singular architectural experience amongst the other neighbouring Federation bungalows. As its name denotes, the complex roof design has been pleated and crafted like a concertina, creating a bold form that borrows its structure from a shade giving palm leaf.

Photo Credit: Simon Whitbread



## Xiangshan Houshan House

**FAN AND ASSOCIATES, China**

Lead Designer(s): Guangxun Cui

**Winner in Residential**

Description: 1) Architectural "prototype" exploration

In the village environment of various building forms, the house designed in a simple volume of sloping roof, respects the local village texture?as well as the house have hollowed terrace and overhang balcony?explores an architectural "prototype" that can communicate with nature. which neither destroy the overall volume nor lose interest.

2) The search for low-cost and high-quality construction

By using local waste building materials and traditional construction techniques, a relatively good balance of economy and aesthetics has been achieved.

Photo Credit: Guangxun Cui



## La mer villa

**Memar Architecture , United Arab Emirates**

Lead Designer(s): Amr Akkad

**Winner in Residential**

Description: Brief description:

MEMAR designed this one-of-a-kind villa located in UAE, Dubai, La Mer beach, with a 600 sq. m built-up area, using special white paint and a touch of wood for an elegant, warm, and satisfying combination.

Ensured a solid façade for the main side of the villa to ensure privacy. However, the other exterior sides have an open large glass façade toward the landscape for residents to enjoy a private view and the night air breeze.



## Affordable Housing in Milan

**C+S Architects Limited, United Kingdom**

Lead Designer(s): Maria Alessandra Segantini

**Winner in Residential**

Description: Designing for the public good. We feel we have turned an affordable housing project into an action to defend public space, giving it back to the community. The plot borders the park of Cascina Merlata, the largest housing development in Europe. Initially planned as a 'gated community', we have proposed to break the volume into two parts to give back the community a public space, creating a 'urban door' between the Village and the Park. The new Piazza is an open and accessible space for all people relating the different levels of the street and the park: a threshold between the built and nature.

Photo Credit: Alessandra Bello



## Villa Sjövikén

**Jenni Reuter Architects, Finland**

Lead Designer(s): Jenni Reuter

**Winner in Residential**

Description: Villa Sjövikén

Villa Sjövikén is a one-family house on the Kemiö island in Southern Finland. The steep site inspired to design a building on several levels adjusted to the fragile archipelago nature.

The site is approached through the forest and the sea view is experienced only after entering the house. The heart of the house is the see-through fireplace, surrounded by an open kitchen, dining and living area. From the core of the building there are views to four directions.

Photo Credit: Marc Goodwin and Juha Ilonen



### Fort 137

**Daniel Joseph Chenin, Ltd., United States**

Lead Designer(s): Daniel Joseph Chenin

**Winner in Residential**

Description: Located in Nevada along the western most point of the Las Vegas Valley in with unobstructed views of the Red Rock Canyon Conservation Area to its northwest and Spring Mountain along the southwest, Fort 137 is an environmentally conscious home comprised of a series of connected rock masses emerging from the earth.

Panoramic glass doors on the north and south facades extend the living space beyond the architectural perimeter while providing cross-ventilation and daylighting, along with expansive views.

Photo Credit: Stetson Ybarra, Stephen Morgan, Daniel Joseph Chenin



### Euroa House

**Robert Harwood Architects, Australia**

Lead Designer(s): Robert Harwood

**Winner in Residential**

Description: Set in a forbidding and spectacular landscape in central Victoria, this house is built from Core Ten Steel, ICF blocks and SIPs panels to provide a high level of thermal insulation. The owner/builder approached the architect in 2013. After the design and documentation phase, the works commenced construction in 2015 and were completed in early 2019.

This is truly a Grand Design, with works having been filmed along the way by Grand Designs Australia.

Photo Credit: Armelle Habib



### Casa das Freiras

**Mário Martins Atelier, Portugal**

Lead Designer(s): Mário Martins

**Winner in Residential**

Description: The house was built from scratch on the degraded space of a vehicle workshop. A new building appears behind a massive, powerful wall that is more than a meter thick, guarding the memories of successive occupations and that now plays the role facing onto the street. The existing wall provides ancestral tranquillity for the patio house, a common design in the surrounding area because of the long Moorish occupation.

In a more reserved area, there are 4 bedrooms that open onto the garden.

Photo Credit: © Fernando Guerra / FG+SG



## MIRAI HOUSE OF ARCHES

**SANJAY PURI ARCHITECTS, India**

Lead Designer(s): SANJAY PURI , NINA PURI

**Winner in Residential**

Description: Designed on a small corner plot of 622 sqm within a residential villa layout, Mirai is a contextual house in response to the hot desert climate of Rajasthan , India.

This sculptural house is contextual to its surroundings, the climate & the owners needs creating an interesting play of volumes, open enclosed & semi enclosed spaces at every level. The design creates energy efficient spaces with reduced heat gain & indirect natural light in each part of the house.

Photo Credit: MR.DINESH MEHTA



## Stairway to the Stars

**MINARC, United States**

Lead Designer(s): MINARC / Erla Dögg

Ingjaldsdóttir / Tryggvi Thorsteinsson

**Winner in Residential**

Description: Located in sunny Los Angeles, we present the Wasatch Residence. The intended vision for the piece was inspired by the unique light and colors of its location. The home has a beautifully unobstructed view from the moment one enters the mind blowing enlarged wood door to the exquisitely expansive backyard. Although it has a feeling of transparency throughout, it is perfectly private from the street and the public.

The front courtyard allows for added privacy with a descending staircase that leads to the home's private movie theater and discotheque as well as a guest apartment.

Photo Credit: Art Gray



## TIMELESS

**APOLLO Architects & Associates Co., Ltd., Japan**

Lead Designer(s): Satoshi Kurosaki

**Winner in Residential**

Description: This house in a quiet residential neighborhood of central Tokyo was built for a couple who had long lived on the property but wanted to rebuild as they entered a new phase of life after their three children left home. The simple exterior design comprised of two massive volumes piled on top of each other takes advantage of the corner lot, with a façade of exposed concrete imprinted with cedar formwork. Outward-facing windows are limited to horizontal slits to preserve privacy and increase security.

Photo Credit: Masao Nishikawa



## House Nordlicht

**FACE2050, Germany**

Lead Designer(s): Florian Schätz

**Winner in Residential**

Description: A stonemason and his wife wanted a new home that was seamless, sculptural and surrounded by nature.

Like a boulder, the sculptural cast of fair-faced concrete sits on a gentle rolling hill. The pitched roof cantilevers against the sloping landscape backdrop and frames the views of the near Bavarian National Park.

The monolithic structure follows the formal principles of curating space and framing the surrounding landscape through solid and void.

Photo Credit: Rainer Taepper



## Renovation and reconstruction of the landmark Tuebingen District Court

**Dannien Roller Architekten + Partner, Germany**

Lead Designer(s): Maren Dannien

**Winner in Restoration and Renovation**

Description: Conversion of a military building for the Tübingen Probate and Guardianship Court. The 1907 chamber building was converted between 2018 and 2021, in a balancing act between military construction and the modern requirements of a place of jurisdiction. Due to its use as a vehicle hall, the fabric of the building had been severely damaged, which made it necessary to replace the ceiling above the ground floor with extensive support measures. The former garage doors to the rear were opened up to allow light into the courtrooms.

Photo Credit: Dietmar Strauss



## Thankusir Neverland

**Jingle Design, China**

Lead Designer(s): Zhou Bo

**Winner in Restoration and Renovation**

Description: Thankusir Neverland, formerly an abandoned auto repair shop, was composed of a small building with a basement, an annexe, and several small outdoor spaces. Each space was divided by the wall into trivial and messy area with no connection. After several years of silence, the abandoned automobile repair plant has blossomed the unique charm of the old buildings after renovation of Jingle Design. With distinctive personality and creative ideas in commercial design, the designers continue to explore the infinite possibilities of commercial space and interactive experience.

Photo Credit: Xing Wen, Da Bai



## Vertical Loft

**Skolnick Architecture + Design Partnership, United States**

Lead Designer(s): Lee H. Skolnick, FAIA

**Winner in Restoration and Renovation**

Description: Located in the Greenwich Village historic district in New York City, this project called for the complete renovation of a five-story, 1830's townhouse. The historic Federal Style façade was carefully preserved during construction, as were most of the existing interior floor plates. Behind this masonry face we created a new world centered around light, space, and revelation. New apertures through floors and ceilings channel natural light from the skylight down to the lowest level.

Photo Credit: Thomas Loof



## Glorieta Cibeles Tower

**CIMET Arquitectos, Mexico**

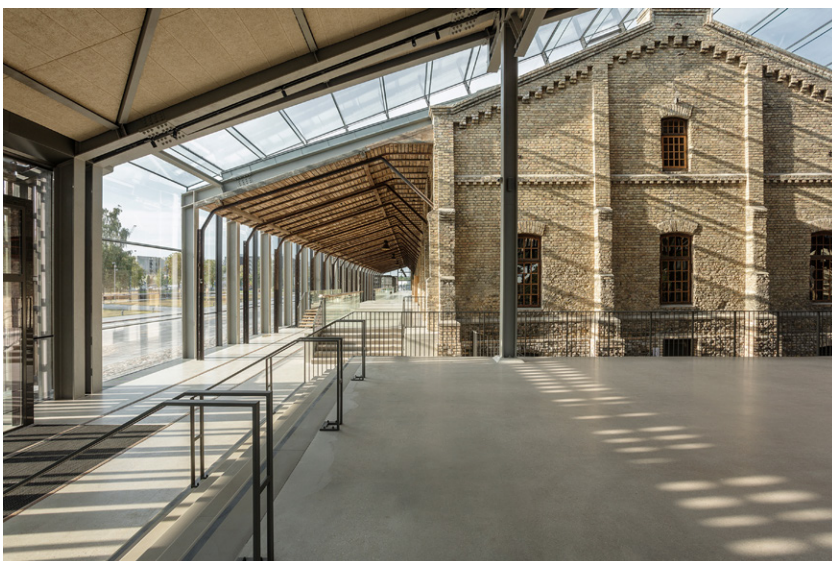
Lead Designer(s): Sholem Cimiet, Yoram Cimiet

**Winner in Skyscraper / Restoration and Renovation**

Description: The Glorieta Cibeles Tower is a complete up-cycle of a structure abandoned and deemed unsafe after the historic 1985 earthquake. Designed as a sculptural inhabitable obelisk, the transformation comprised four fundamental axes: structure and resilience; comfort and functionality; aesthetic and tectonic design; and sustainability, in operational and embodied energy.

Structurally, 4 viscous structural dampers were incorporated at each floor, reducing up to 60% of earthquake strength.

Photo Credit: Luis Gallardo and Jaime Navarro



## Hanzas Perons. Former cargo station transformed into Culture Venue.

**Sudraba Arhitektura, Latvia**

Lead Designer(s): Reinis Liepins (Architect, Conservation Architect)

**Winner in Restoration and Renovation**

Description: The former warehouse building which dates back to the very beginning of 20th century is located in the area of former freight station on the edge of historic city center of Riga. The last shipment of goods in this building was reloaded in 2009, designing began in 2016, and reconstruction works in 2017. The previously inaccessible industrial heritage site has been preserved almost untouched until today discovering brick walls, wooden beams, many sliding doors and gates.

Photo Credit: R.Hofmanis



## XC273 by XCOMMONS

**dongqi Design, China**

Lead Designer(s): JIANG Nan

**Winner in Restoration and Renovation**

Description: Situated in the heart of Shanghai city, the three-story old factory that we was commissioned to renovate presents itself as a historical ruin where the raw structure was truly exposed in all its magnificent. Conscious of this beauty, we developed its own approach that enhances the peculiar characteristics of the building by creating a contrast between the old and new finish materials for this new fashion and art hub that is going to break the rules of the retail experience.

Photo Credit: Raitt Liu



## Zhan Yuan (Courtyard House for Gazing)

**weestudio, China**

Lead Designer(s): Dai Haihui

**Winner in Small Architecture**

Description: The project is located in a typical village (Hou Hei Long Miao) near Yanqing, Beijing, which is surrounded by a beautiful mountain (Hai Tuo Shan) from the north, and a pond (Guan Ting) from the south.

In 2018, Wee Studio was invited here for a design collaboration with four other architects, to build a cluster of minsu — a type of Chinese-style bed-and-breakfast — consisting of five buildings. The five sites to be transformed were randomly matched with the architects, making for a fruitful project in which distinctive design methodologies are juxtaposed within a single complex.

Photo Credit: Sun Haiting, Zhu Yumeng



## Tiny Club House

**A+ Architects, Viet Nam**

Lead Designer(s): Hoang Kha Vu

**Winner in Small Architecture**

Description: Tiny Club House was born based on the investor's desire to have a space where visitors come to connect and rest space for the manager. The building is located in a camping space where is the back porch of a homestay chain in Da Lat.

The image of flickering campfire wood has since become an ideal source of inspiration. We are always looking for a design that is both intimate, connecting people to people and between people and places. What's most private, we choose to put it on.

Photo Credit: Nguyen Thi Lan Anh



## KIBA Tokyo Residence

**SAKAE Architects & Engineers, Japan**

Lead Designer(s): Eisuke Yamazaki

**Winner in Small Architecture**

Description: The project is to rebuild a residential building at a small site in \*KIBA Tokyo Japan. For adaptation of the various lifestyles and improving the added value of the building, we designed multiple spaces by using exceptional cases of maisonnette style housing to the building standard law. At the same time, we attempted to put the building in harmony with the specific and historic site of KIBA which was known for lumber dealings.

We designed three different types of housings, namely a residence for one person, a couple, and a family with children in a single building.

Photo Credit: Koji Fujii / Yuichi Higurashi



## Asante Library

**Richärd | Kennedy Architects , United States**

Lead Designer(s): James Richärd, AIA

**Winner in Small Architecture**

Description: The project consists of a 10,000-square-foot library sited on a twelve-acre park in Surprise, Arizona. Given the context and site set in the park, the design of the library seeks to emulate dappled sunlight and shadow play as one would experience under a tree canopy.

To reduce overall site disturbance, the library is built on an elevated plinth to maintain the required clearance for rainfall collection and act as the foundation for the building to anchor to.

Photo Credit: Roehner Ryan, Inc. and Mark Boisclair Photography



## INSTRUMENT for Building, Envelope, Assembly & Material research (BEAM)

**Bill Price, Brown Endowed Chair, School of Architecture, PVAMU, United States**

Lead Designer(s): Bill Price

**Winner in Small Architecture**

Description: Research into Building, Envelope, Assembly, and Materials

The INSTRUMENT is a modular outdoor test hut. Its purpose is to enable faculty and architecture students to do full-scale testing to assess building performance under realistic conditions with an overt interest in measuring and not simulating. In-situ testing boundary conditions are representative of real operating conditions components experience because testing is performed on full-scale structures.

Photo Credit: Bill Price courtesy of BEAM - Program for Building, Envelope, Assembly, Material research

## Song-Zhang-Kou New Rural Housing

BA, China

Lead Designer(s): Jia You

**Winner in Social Housing**

Description: This 600+ homes community was merged from 3 aggravated hollowed villages. The design focused on preserving the collective lifestyle for the elderly population and keeping a low construction budget.

For traditional lifestyle, large private backyard for storage and gathering space for neighborhood interaction are important. In the outcome, housing orientation follows organic village context; clustered housing forms plazas in variety sizes, which can serve as community venues, creating various possibilities of traditional street life for neighbors; also, the backyard in each household serves as private space for veggie garden and food drying.

Photo Credit: Zhi-Yi Architectural Photography



## Striatius

**Block Research Group (BRG) at ETH Zurich and Zaha Hadid Architects Computation and Design Group (ZHA, United Kingdom)**

Lead Designer(s): Block Research Group (BRG) at ETH Zurich and Zaha Hadid Architects Computation and Design Group (ZHA)

**Winner in Sustainable and Energy Saving**

Description: Striatius, an arched masonry footbridge composed of 3D-printed concrete blocks assembled without mortar or reinforcement. The first of its kind, it combines traditional techniques of master builders with advanced computational design, engineering and robotic manufacturing technologies. Proposing a new language for concrete that is structurally informed, fabrication aware, ecologically responsible and precisely placed to build more with less, Striatius optimises the properties of masonry structures, 3D concrete printing and contemporary design; presenting an alternative to traditional concrete construction.

Photo Credit: © Naaro, ©in3d



## Eric Tweedale Stadium

dwp | design worldwide partnership, Australia

Lead Designer(s): Ivana Simkovic

**Winner in Recreational / Sustainable and Energy Saving**

Description: The design of the Eric Tweedale Stadium is driven by the stadium's connection to the local environment and history of the Cumberland Plains. Located within Granville Park, once a widely forested area, its form and materiality respond to the site's heritage and create a connection to its current sporting environment.

The Stadium includes a grandstand with change rooms, a multipurpose room, first-floor function space, a commercial kitchen, and an outdoor viewing deck.

Photo Credit: Brett Boardman





## No Footprint House (NFH)

**A-01 (A Company / A Foundation), Costa Rica**  
Lead Designer(s): Oliver Schütte

### Winner in Sustainable and Energy Saving

Description: The No Footprint House (NFH) is located in Ojochal, a small village at the edge of the vast tropical rain forests along the southern Pacific coast of Costa Rica. Placed in a humid tropical climate, the building design responds to its surrounding habitat by passive climate control through natural ventilation and solar shading. The NFH is organized around a central service core, which includes all services, machinery and intelligence. The compression of utilities in one compact unit enables an open floor plan all around the core.

Photo Credit: Fernando Alda



## OCT Bao'an OH BAY

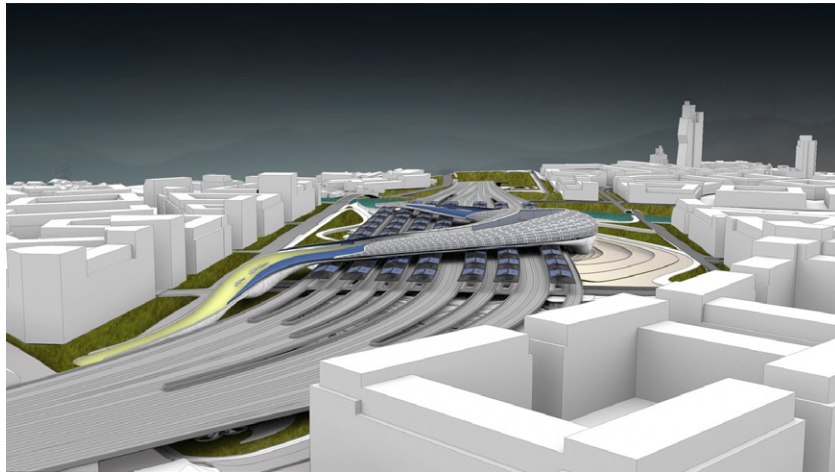
**Laguarda.Low Architects, United States**

Lead Designer(s): Pablo Laguarda FAIA

### Winner in Urban planning: large integrated projects

Description: The 128-acre masterplan revolutionizes the definition of 'park.' Located along a three-quarter mile waterfront site, the program features four primary user zones within a fully integrated natural habitat—East and West Retail Parks, an Urban Business Center, and a Waterfront Cultural Park. All zones interconnect via undulating pedestrian paths, expansive waterscapes, and meandering promenades. Plazas, bosques, and lawns throughout provide unique spaces for public gathering.

Photo Credit: Tong Yanlong, ZC Architectural Photography Studio, OCT Group



## Intertwine - Re-Connecting Loose Ends of the City

Savannah College of arts and design, United States

Lead Designer(s): Miloni Shah

**Winner in Bridges and Public infrastructure**

Description: Intertwine - Re-Connecting Loose Ends of the City

A city is formed in different layers, buildings, open spaces, and humans. In the layer of planning and development, transit plays an important role in interconnecting the city and providing ease in commutation for the people. This thesis will develop the understanding of forming layers in urbanism, the importance of transit systems, and the adaptable human-centered design approach.

As humans are the users of both, the city, and its transit system, therefore it is necessary to understand how the city functions and what role the transit system play.



## FLORAL KINDERGARTEN

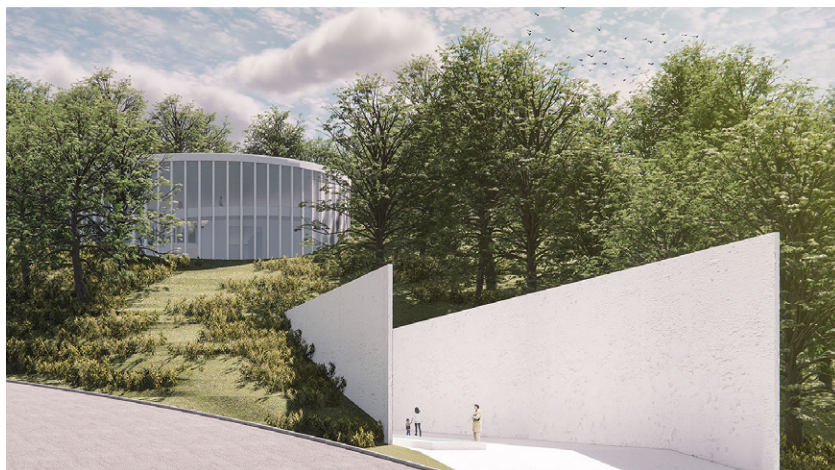
Leibniz Universität Hannover, Germany

Lead Designer(s): Chun Te Lee

**Winner in Educational**

Description: Floral-kindergarten is located in the water town of Limer, Hanover, Germany. Near the kindergarten is a residential planning area and the Leane River. On the other side of the river is the garden and jungle, which retains the original natural area due to the rare development.

Providing a natural and safe learning environment is our primary design philosophy. Children could see different natural landscapes through rooms shaped like petals. This design also brings good light to the interior space.



## Duality - Vincent d'Indy Music Building Extension

University of Montreal, Canada

Lead Designer(s): Adam Mahieddine, Caroline Haumesser

**Winner in Educational**

Description: This theater is the extension of the Music Faculty of the University of Montreal. It sees itself as a gateway to Mount Royal and a transition between the city and the mountain. Highly respectful of its environment, this project seeks to connect the density of the mountain's interior to its surface through the experience of the performance hall and its foyer. This, by establishing a formal, spatial and functional dialogue with the Music Faculty. It is around these dualities that the project draws its richness and through a contrasted and sensitive intervention to the siting environment.



## URBAN HEALTH CATALYST

Harvard University, United States

Lead Designer(s): Xudong Zhu

Winner in Mixed-Use building

Description: The Health District is home to the second-largest concentration of medical and scientific facilities in the US. Due to its singular purpose, the area—which bustles with activity during the daytime—becomes a ghost town at night, leaving only patients, night shift employees, and merciless machines. URBAN HEALTH CATALYST strives to provide an accessible living environment for healthcare employees by introducing mixed-income housing and health-themed programming to the institutional Health District.

Photo Credit: Xudong Zhu & Vicky Chen



## Ecotone

The University of Jordan, Jordan

Lead Designer(s): Bushra Ateyyeh

Winner in Others architectural projects

Description: Ecotone is a prototype for food production in urban areas, which enables the development of a local, sustainable, and resilient food system that integrates the latest technologies to make urban farming a more productive and engaging process.

The design process was based on the exploration of the relationship between human and non-human entities from a post-humanistic perspective, which does not completely exclude Anthropocene, but rather surpasses it.



## 城市灌溉 | 唐山可持续水塔广场

URBAN IRRIGATION | TANGSHAN SUSTAINABLE WATER TOWER PLAZA

过去，“灌溉”通常被理解为是一种在土地上施加一定量的水，以辅助农作物生产的人为过程。在这个项目中，“灌溉”有助于在城市语境中促进水、植物与人的共生活动。

While traditionally, the term "irrigation" is the artificial process of applying controlled amounts of water to land to assist in production of crops, in this proposal, "irrigation" assists in production of activities and human, plant, water lives in an urban context.

位于唐山海港城市转角的水塔作为唐山近代工业时期的产物。过去因为周边灌溉系统不完善而显得基础设施。如今，随着城市供水系统的日益完善，原本为生活、养殖提供方便的水塔已几近闲置。其被拆除的担忧给城市带来了消极的影响。另外，由于永久存续，主体结构的中断也向周边居民带来了安全隐患。更加可怕的是，水塔周边区域因为缺乏规划管理，形成了一个30米见方的闲置空间。在高度密度的城市肌理下，造成了土地资源的极大浪费。另一方面，作为唐山城市发展的缩影，水塔承载了一代人成长的记忆。因此，对于它的更新改造应当保有尊重现代工业历史的态度，并拥有一种向前看的一贯性。该方案设想了一个可持续发展的城市公共空间，它在保留工业遗产特色的基础上，最大程度地满足了当代生活与未来城市发展的需求。

Located at a street corner on Yuhua West Road, the water tower has been a symbolic legacy of Tangshan's modern industrial period. In the past, it used to serve as a water resource infrastructure for the surrounding residents. With the increasingly improved urban water supply system, the water tower, initially convenient and significant for life and cultivation, has been abandoned by the city today. Its current condition is causing multiple concerns: the run-down image lacks the street aesthetic, the structural instability brings safety hazards to nearby residents, and the area inactivity forms a 30 square meters vacant corner space due to lack of planning and management, making the street corner incongruent with Tangshan's high-density urban context. As a Tangshan's urban development epitome, the water tower is the general memory of growth and transformation. Therefore, its renewal and renovation maintain a spirit that respects the history of the modern industrial period and imagines a future that integrates innovation with nostalgia. The proposal visions a future sustainable urban public space that facilitates a contemporary life based on the preservation of industrial relics.

## URBAN IRRIGATION

Harvard University, United States

Lead Designer(s): Xudong Zhu

Winner in Recreational / Sustainable and Energy Saving

Description: While traditionally, the term "Irrigation" is the artificial process of applying controlled amounts of water to land to assist in production of crops, in this proposal, "Irrigation" assists in production of activities and human, plant, water lives in an urban context. Located at a street corner on Yuhua West Road, the water tower has been a symbolic legacy of Tangshan's modern industrial period. In the past, it used to serve as a water resource infrastructure for the surrounding residents.

Photo Credit: Xudong Zhu



## REFOREST UNION

Leibniz Universität Hannover/University  
College London/National Cheng Kung  
University/RWTH Aachen , Germany

Lead Designer(s): Chun Te( David ) Lee

**Winner in Skyscraper / Urban planning: large  
integrated projects**

Description: "Reforest Union" is located in The First Square in Taichung City, Taiwan. Adjacent to Taichung Main Railway Station, it was once the main social area of Southeast Asian cultural communities. Thus, multicultural integration had become our goal of design.

Nowadays, Taiwan accepts more southeast culture and embraces the worker to our community. This place is be the best spot for Taiwanese to step foot into their culture and get to blend the life style through the area.

**interior  
design**



## project JB

Zinc Studio Limited, Hong Kong

Lead Designer(s): Hiu Fung Ng

**Winner in Apartment**

Description: The design stands out with unique geometries with rounded corners. We utilize such signature arches and rounded corners in the cupboards, closets, mirrors and in the sliding doors. To save electricity, we also invite as much daylight as possible into the apartment by replacing the partition walls with a glass door, so that the daylight from all the windows in the room can penetrate through our small space. Combined with an oblate spheroid lamp, and a fresh olive green TV/kitchen wall that arches away in a similar fashion, the small home now glitters with a kind of brilliance that rivals a precious gem.

Photo Credit: Steven Ko



## YUEHAI YIGUI FU APARTMENT LARGE MODEL HOUSE

Bluemoon Design, China

Lead Designer(s): Kelly Lin

**Winner in Apartment**

Description: In the kingdom of art and fashion, life has been changed into a modern show with colorful clothes and various personalities. Envisioning from the scene, the designers introduce distinctive stories into the space. Breaking traditional rules from style, color and interests, the designers change the space into one of distinctive and fashionable style and one of free spirits with the interpretation of residents, in a bid to present various lifestyles in this project.



## Luminous Minimal Refurbishment

Architectural Studio Ivana Lukovic, Greece

Lead Designer(s): Ivana Lukovic

**Winner in Apartment**

Description: This 150m2 apartment occupies the third floor and a roof of a building in an Athenian southern suburb. Limited budget refurbishment transformed existing reality into the oneiric domestic realm. Basic aim during the process was to enhance and reveal the main potential of the given condition - natural light flooded space. That was achieved by increasing the size of window openings in all three bathrooms, while creating a visual contact with the outdoor greenery.

Photo Credit: Athina Souli



## Marballoon

**Between The Walls , Ukraine**

Lead Designer(s): Victoria Karieva

**Winner in Apartment**

Description: There is an opinion that the ideal shape is a circle. We believe that the ideal form does not have a definite name.

In this project, we tried to emphasize the beauty of the generally accepted concept of irregular shape. That is why each Marballoon room is so different, without losing the overall leitmotif of the interior.

In the hallway, we are greeted by Jenny Nordberg mirrors, the apartment immediately plunges into a futuristic, but homey and cozy space.



## Alkebulan The African Dining Hall

**TGP International Restaurants, United Kingdom**

Lead Designer(s): TGP International Restaurants

**Winner in Commercial / Hospitality: Bar and Restaurant**

Description: Alkebulan The African dining hall is a celebration of the rich and diverse culture of Africa consumed through its food, music and design, curated by world-renowned chef Alexander Smalls. Alkebulan, the oldest name for Africa, translates to "mother of mankind" or "garden of Eden" and is the only name for the continent of indigenous origin. Alkebulan is a world first, celebrating the last untapped cuisine and the world's largest hidden gem.

Photo Credit: Rabih Rechdan



## Cinesky, The Gravity

**Oft Interiors Ltd., Hong Kong**

Lead Designer(s): Cm Jao & Ken Cheung

**Winner in Commercial**

Description: It is human instinct to explore, to discover, and to build.

In CINE SKY Cinema, we seek resonance, an experience about outer space and life.

The project was born along with the commercial upgrade of Vanke Plaza in Longgang, Shenzhen. Longgang Vanke Plaza carries out fine adjustment and reform in three aspects.

CINE SKY Cinema is an important part of this upgrade, based on this, "space scene reconstruction" has become an important gene of CINE SKY Cinema.

Photo Credit: Sean



## Nanjing (Lishui) OCT Happy Hour Innovation Center

DDC, China

Lead Designer(s): Zhenghai Pan

**Winner in Commercial**

Description: The current shortage of water resources is an imminent issue that human beings have to address without delay. The inspiration of this project comes from Day Zero, a documentary directed by Kevin Sim: "Water may come into people's daily life in many images, in particular, people's life of feelings." The designer extracts the element of "water", combines "sales center, exhibition center, experience center and art center" in one work, and adopts an open and inclusive design concept to harmonize the indoor and outdoor scenarios, creating an organic commercial space for the residence project where different scenarios interact with each other and complement with the streets.

Photo Credit: One Thousand Degrees Image



## Cultural Scape

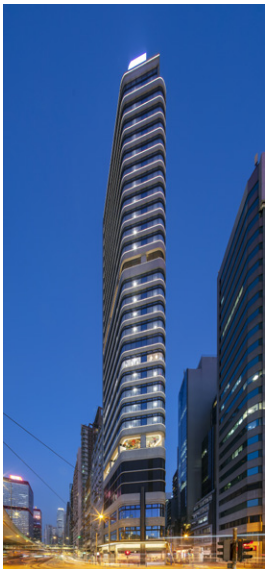
Shanghai Face Decoration Design Engineering Co., Ltd, China

Lead Designer(s): Zhang Li

**Winner in Commercial**

Description: The space is designed and inspired by the culture and history of Jinan City, blending human culture into the stylish space. The art of weaving and elements of wooden lattice depict the aesthetics of Song dynasty.

At the entrance hallway, the terrazzo effect tiles flooring and the metal lattice walls create a sleek and neat interior space. It allows one to travel between a visual feast, and the perception of time and space. Leaving sense and analysis behind, one gets to feel the beauty in between the spaces.



## Connaught Marina

AGC Design Limited, Hong Kong

Lead Designer(s): Tony Lam

**Winner in Commercial**

Description: Inheriting the tradition of trading activities in the district, Connaught Marina is well-connected with the bustling business centre. The podium serves as retail and F&B spaces, typical floors offer flexible office layout ranging from 400 to 1850 sq.ft, where 270 degrees sea view at lofty top floor fit for top notch catering premises. This multi-purpose tower embodies new working life style where culture, art and business are inseparable. The timber strips and moody lit interior reminiscent old trading ship cabin.

Photo Credit: AGC



## Cave of Stone

**Jixi Design Studio, Taiwan**

Lead Designer(s): Yu Cheng Wang

**Winner in Commercial**

Description: Hidden at the corner surrounded by trees, the hair salon in the gray stone palette is located on the street. Big window installation invites sufficient sunlight indoors, and as well includes all the natural landscape from the outside that eventually becomes a part of the interior. The light gray stone materials with dark brown leather and light wooden colored items, combined nicely to create multilayers with the textures and color palette. The inner structure is composed of steel square tubs that build up a style integrating both Korean minimalism and semi-industrial vibe.

Photo Credit: Yue Siang Zhou



## Huafa Properties & Midea Nanjing Yun Zhu Experience Center

**Maudea Design Studio, China**

Lead Designer(s): Wally Mau

**Winner in Commercial**

Description: The project is located by the Qinhuai River, the most famous and romantic river in Nanjing,. We take the shape of the rushing river and transform it into thousands of turns and unrestrained lines in the space, so that people can feel the history and poetry of the city again when they freely roam in the space. We abandon all complicated colors and shapes, and use black and white, simple and smooth patterns and lines. Large blank walls allow natural light and shadow to be the natural designer, bringing continuous change to the space, and presenting the Chinese aesthetic spirit of simplicity and connotation.

Photo Credit: Maudea Design Studio



## Vanke Nantong Yan Yu Guang Nian Experience Centre

**Maudea Design Studio, China**

Lead Designer(s): Wally Mau

**Winner in Commercial**

Description: The completion of the new airport in Nantong has enabled the city to enter the era of flight and connected it with domestic and overseas cities. As a result, the design is themed on "Social Club in the Age of Flight", leading the guests to experience a unique dining experience. Through the use of a number of metal and curves, the first floor is full of emotional and rational power, bringing a strong futuristic atmosphere. The second floor uses a lot of smooth arcs and curved surfaces, as well as the eye-catching ceiling chandeliers shaped like airplane engine, symbolising the era of flight.

Photo Credit: Maudea Design Studio



## Moli Landscape

**Jingle Design, China**

Lead Designer(s): Zhou Bo

**Winner in Commercial**

Description: Landscape is the ideal realm of combining lofty spirit from nature with the present world. The birth of this project starts from the combination of commercial procedures and classic feature, which also became the core basis of the design. The designers pay attention to innovation and profession with an eye to effective and word-of-mouth. Using the professional knowledge in new retailers, consumption, spread and other areas, the designers complete the popular project by understanding the commerce and humanity.



## Weekly Florist

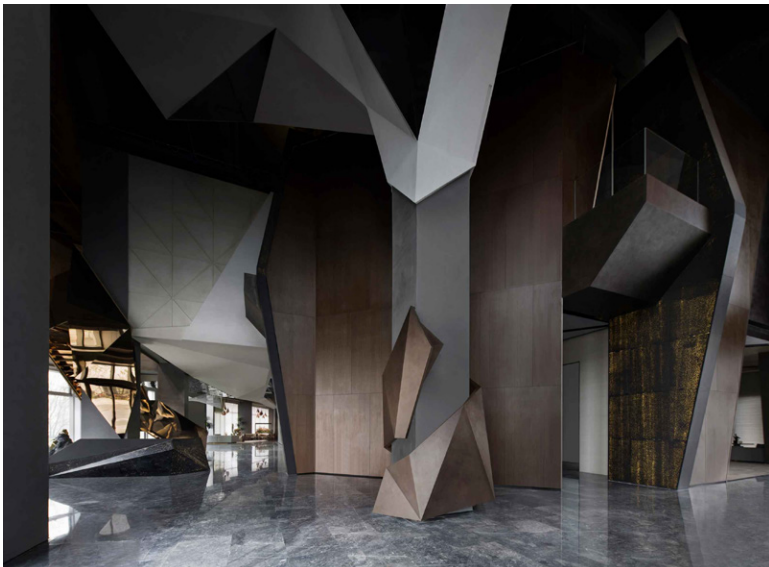
**Tsikan Interior Design, Taiwan**

Lead Designer(s): Chuan-Wei Lin

**Winner in Commercial**

Description: Weekly Florist is a floral workshop. In the renovation plan, the concept originates from combining the forms of canvases and sculptures. With each area enriched with textured surfaces much like a canvas, the blend between art and life blurs into one. The interior utilizes properties of minimalism and classicism to portray the back and foreground within the premise. Through meticulous ingenuity, lighting, textures, and materials used dramatically transform the interior into a work of art.

Photo Credit: YHLAA Studio



## FENGLIN JIUXI MARKETING CENTER

**Bluemoon Design, China**

Lead Designer(s): Kelly Lin

**Winner in Commercial**

Description: The project is located in the business center of Gangwu District, Xi'an Province with a long history of more than 3,000 years and serving as the starting point of Silk Road.

The designers work to break the classic symbols of Xi'an by deconstructing the order to express lively personality and infinite creativity. By thinking out of the box, the designers abstract warm lines from strong elements and create specific humanistic design, enabling multiple forms integrate with the local spirits.



## DEJI Cultural Complex

The Triangle.Jp Co.,Ltd., Japan

Lead Designer(s): Masato Kure

**Winner in Commercial**

Description: DEJI Cultural Complex is a new type of entertainment venue that provides a fusion of cultural-arts complex and commercial facility on its top 7300m<sup>2</sup> floor. The place has sophisticated yet inviting ambiance since there is no walls between each area. Eliminating entire walls freed the space from having the boundaries between inside and outside—giving customers a little “preview” before entering the space. The entire design reflects the culture, people, and the city of Nanjing; therefore, visiting this complex easily becomes part of their lifestyle.

Photo Credit: Inter\_mountain



## ZHANGPU XI YARD

Huge Rock Design, China

Lead Designer(s): WENLI WU

**Winner in Commercial**

Description: Inspired by the culture of southern Fujian, China, the ZhangPu XiYard is designed using traditional Chinese elements such as brick carving and red bricks. Brick carving is an art of carving on a square inch brick surface and is one of China’s representative folk arts; the soil in southern Fujian is rich in iron trioxide, which allows for the firing of brilliant red bricks, a material that is compatible with the humid, typhoon-prone climate of southern Fujian.

## Spanish Pavilion Exhibition

External Reference, Spain

Lead Designer(s): Carmelo Zappulla

**Winner in Exhibition / Gallery**

Description: The Spanish exhibition is centered on the relationship between sustainability and collective intelligence.

We transformed these concepts into an experiential didactic journey, breaking the boundaries between design, art, and digital tools.

Visitors enter the pavilion through the ground floor which consists of a cluster of open plazas where a series of installations take place. We synthesize some of the most relevant contributions of Spanish culture to the World and highlight its relationship with the Arab culture.

Photo Credit: Adrià Goula





## Tiger Wings Cloud Factory Digital Center

DDC - YUMEI TEAM, China

Lead Designer(s): Yajing Li

Winner in Exhibition / Gallery

Description: Following the rapid development of modern technology, the digital technology has blurred the boundary of the space, and our desire for the unknown endows the space with more possibilities. The design team of the Tiger Wings Cloud Factory Digital Center sets out with the moon, and incorporates technology and art design, to unfold a series of mysterious and boundless cosmic space, which creates a unique sense of space, brings a strong visual impact, and builds a unique space as aspired by the proprietor.

Photo Credit: Xingxing Chen



## Nebula

Shanghai Face Decoration Design Engineering Co., Ltd, China

Lead Designer(s): Zhang Li

Winner in Exhibition / Gallery

Description: The title of this art gallery space, "Nebula," symbolizes the infinite prosperity that goes far away and beyond. Just as the essence of literary gathering in history, what matters the most in this design is the casualness, the conciseness, the comfort and serenity generated during the process. Thus, different shades of colors are applied to create a peaceful stillness.

The whole space is neat and concise with selective and delicate texture, which offers mildness and gentleness in the space.



## Tracks

Foshan Topway Design, China

Lead Designer(s): Wang Zhike & Li Xiaoshui

Winner in Exhibition / Gallery

Description: Through tactfully drawing the two "O"s from the brand name "OSSO" as basic visual symbols, the designers created a circular hollow space, a round ceiling structure and ring-shaped ceiling lamps, symbolizing the infinite universe and the trajectory of stars respectively. The "O"s in two different forms weave in the space, appearing like stars moving in the vast universe. The design team used such metaphorical spatial narratives to create a unique sense of space and distinctive brand.



## Pressoria - Centre d'interprétation sensorielle des vins de Champagne

**Casson Mann, United Kingdom**

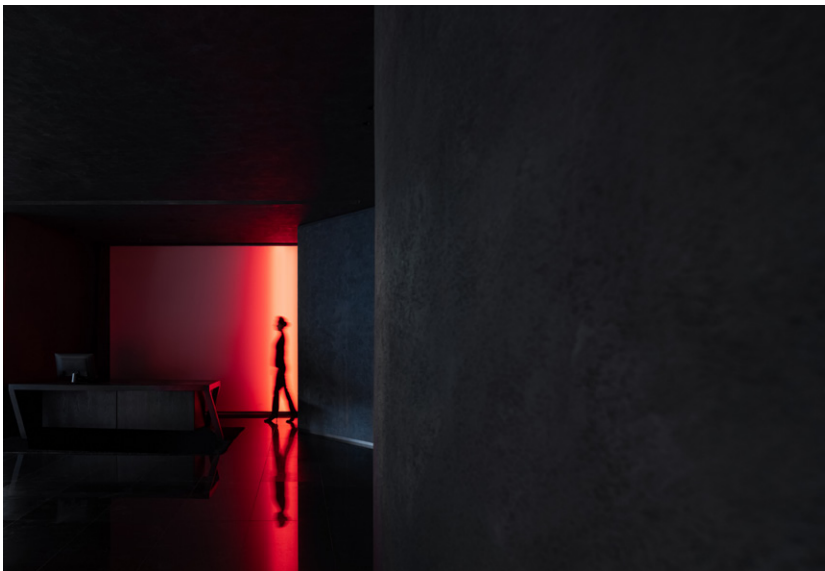
Lead Designer(s): Gary Shelley

**Winner in Exhibition / Gallery**

Description: Pressoria is a sensory, poetic and engaging visitor experience, which tells the story of champagne and its unique production in this region of France. The designers created an innovative scenographic journey, where visitors "unlock the secrets hidden within every flute". With each sip, they come to enjoy an exciting mixture of elemental ingredients, geological forces and cultural practices.

Pressoria lies within former pressing centre Maison Pommery, at the foot of the historic slopes of Ay-Champagne.

Photo Credit: ©Boegly+Grazia



## Da Dong Gastro Esthetics

**AD ARCHITECTURE, China**

Lead Designer(s): Xie Peihe

**Winner in Hospitality: Bar and Restaurant**

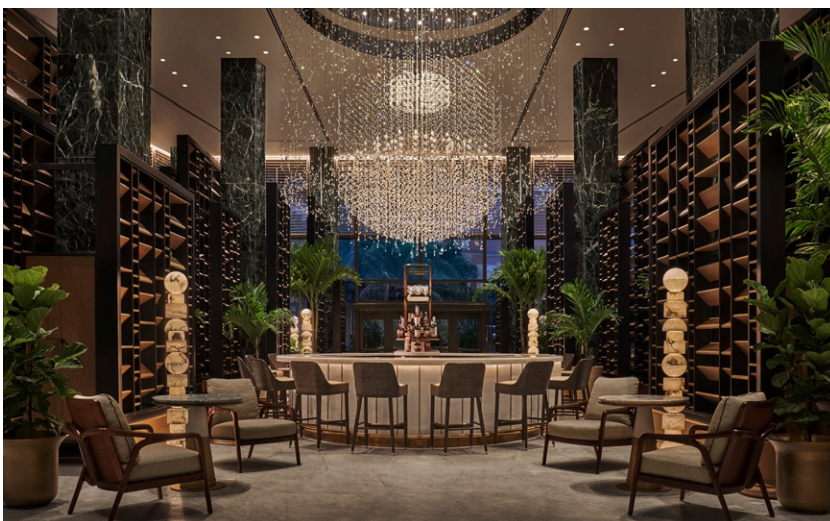
Description: The project is located in Nanxincang, Beijing. The design team aimed to create an advanced yet slow-paced process to enable people to enjoy a short yet special dining experience.

Light and shadows permeate structural gaps.

The light and shadows move in the curved hallway space, breaking conventional sedate and dull spatial atmosphere, full of a sense of dynamics and curved beauty.

The project adopts modern materials and design techniques to interpret the Chinese restaurant.

Photo Credit: Ouyang Yun



## Four Seasons New Orleans Chandelier Bar

**Bill Rooney Studio, Inc./BRSS Studio, LLC, United States**

Lead Designer(s): Bill Rooney

**Winner in Hospitality: Bar and Restaurant**

Description: Four Seasons Hotel New Orleans Design Narrative Chandelier Bar :

New Orleans is a city that embraces a multicultural heritage, and celebrates life, alluring gardens, art, music, and cuisine.

Set on two riverfront acres that will be flanked by lush gardens, the design of the hotel is inspired by the sanctuary and allure of this botanic backdrop. It is this restful setting that the interiors become a foundation to celebrate the multi-cultural heritage of the city through art, food, and threads of historic influence.

Photo Credit: Christian Horan



## Black Rock Bar

**hcreates interior design, China**

Lead Designer(s): Hannah Churchill

**Winner in Hospitality: Bar and Restaurant**

Description: Black Rock is a Whisky lover's nirvana. Originating from London, bringing flavor to the forefront and helping people discover Whisky in a new way. We worked with the Shanghai team to convert an unassuming corner site on the popular Fumin Road in downtown Shanghai. A simple black façade with strips of filtered light marking the doorway, Black Rock subtly welcomes you in. A project of contrasts: light and dark, smooth and rough. The space balances the classic with the current to create a uniquely accessible experience.

Photo Credit: Brian Chua, Graeme Kennedy



## The XMacallan Bar

**Jingle Design, China**

Lead Designer(s): Zhou Bo

**Winner in Hospitality: Bar and Restaurant**

Description: Without trivialities, distance and limitation, the design for the XMacallan Bar by Jingle Design perfectly interprets a scene of drinking whisky with friends, composes a melody of classic style, and creates an immersive space beyond the hustle and bustle of city life.

Realizing the aesthetic value of space based on commercial logic is the designers' secret to delivering distinctive commercial spaces.

As you step into the XMacallan Bar, a sweet smell of wine will greet your nose, you feeling as if surrounded by oak barrels filled with wine.



## Brich Forest

**Kris Lin International Design, China**

Lead Designer(s): Kris Lin

**Winner in Hospitality: Bar and Restaurant**

Description: The project is located in Xi'an, close to Wetland Park in the south. This mixed multi-function space is divided into two floors, the first floor is cafe, the second floor as the restaurant and art gallery space. We wanted to create a mood, a restaurant in the forest. It allows people to take a break from their daily lives and enter a relaxed environment.

The grid system of indoor ceiling takes the intertwined canopy in the forest as the intention, abstracts the canopy group images in the forest into a tensile architectural structure.

Photo Credit: KLID



## Levi

**Johannes Torpe Studios Denmark ApS, Denmark**

Lead Designer(s): Johannes Torpe

**Winner in Hospitality: Bar and Restaurant**

Description: Restaurant Levi is a daring and lively space that offers its guests and visitors an immersive, sensory experience, expanding beyond the plate. Levi was born from the love of the Italian grappa master Romano Levi, whose passion and attention to detail continues to be unmatched. Romano Levi combined incredible grappa with poetic design, a direction to which Restaurant Levi pays tribute. The total development of Restaurant Levi, from cutlery to concept, is the product of a creative collaboration between restaurateurs Copenhagen Concepts and designers Johannes Torpe Studios, ensuring coherence and depth in concept and detail.

Photo Credit: Alastair Philip Wiper



## Ah Ma Hand Made Shenzhen OCT Bay

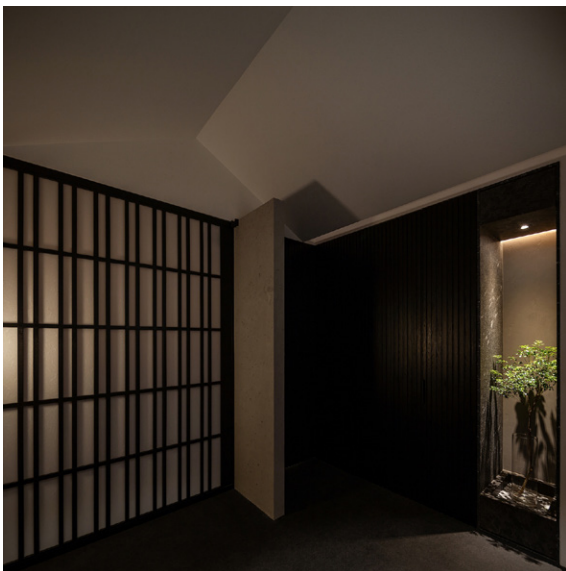
**XDH Design , China**

Lead Designer(s): Denver Hsu

**Winner in Hospitality: Bar and Restaurant**

Description: Ah Ma Hand Made is located in the OCT Bay in the southern coastal zone of Shenzhen. In the commercial community full of traces of modernization, Ah Ma Hand Made is unique from the modern foundation, with a distinctive style and the power of architecture to create different charm for this new era land. Inspired by the slow sea breeze and delicately integrated with natural light, it tells the story of this space with powerful architectural texture full of time marks.

Photo Credit: INSPACE



## Sushi Kamosu- A traditional Japanese Sushi-ya imagery built in modern commercial building

**in Him's Interior Design, Hong Kong**

Lead Designer(s): Samuel Lam

**Winner in Hospitality: Bar and Restaurant**

Description: Sushi Kamosu is an Edomae Nigiri-Zushi Sushi-ya located on the 15th floor of a Hong Kong commercial building, the greatest challenge of this project is to express the Tradition, Spirit and Culture with design language and pass a Japanese Sushi-ya imagery to customer.

Pitched roof and Plaid sliding door being used in lobby, the first sight while steps out from the elevator, giving the Japanese traditional house-like vision, customers feel entering a different world and start to preparing on coming food experience.



## Dauphine's

**GrizForm Design Architects, United States**

Lead Designer(s): Griz Dwight AIA LEED AP

**Winner in Hospitality: Bar and Restaurant**

Description: Dauphine's is a New Orleans-inspired eatery that exudes the essence, grit, and magic of The Big Easy, infused with the spirit of The Capital City. The restaurant's interiors embrace classic French and Spanish design elements including custom oak parquet flooring, walnut millwork, mosaics, marble, tile, and hand-cast wrought iron.

Inside, several pendant-lit tables and banquettes fill the opening dining room, where the eatery's custom raw bar and wood charcuterie case are on full display.

Photo Credit: Kristopher Illich



## KAMYSHI restaurant

**Megre Interiors , United States**

Lead Designer(s): Yuna Megre

**Winner in Hospitality: Bar and Restaurant**

Description: Design concept:

Despite the fact that the restaurant is located in the epicenter of the metropolis, MEGRE INTERIORS has created an atmosphere that immerses guests in an atmosphere of peace and relaxation.

Corrugated chrome panels and arches reflect soft lighting, creating a shade of flowing river water. The walls and floors are finished in earthy tones, where the play between rough, textured, smooth and glossy surfaces attracts attention.

In addition to the main dining room, the restaurant has two separate dining rooms, each with a unique atmosphere that looks more like a trendy residential dining room than a restaurant setting.



## DOM restaurant

**Megre Interiors , United States**

Lead Designer(s): Yuna Megre

**Winner in Hospitality: Bar and Restaurant**

Description: MEGRE INTERIORS Director Yuna Megre used her signature Torn Open Kitchen approach to eliminate the separation between guests and the kitchen, immerse everyone in the cooking process, giving chefs a central place. An impressive wood-burning stove in the shape of an antique stove sits in the center of this open kitchen, offering 360-degree views of the dining room. The kitchen pays homage to the Russian heritage with the help of a daub, a traditional plaster technique on all its surfaces.



## Mansion Feast

LDH Design, China

Lead Designer(s): Daohua Liu

**Winner in Hospitality: Bar and Restaurant**

Description: This building, with a history of about 30 years, is located near the Lama Temple and within the scope of the old town protected areas of Beijing. In terms of design, first of all, the designers retained the original appearance of the building, such as colored drawings, wooden beams and the like, because such original appearance are integrated with the surrounding environment. Secondly, when planning, the designers refer to the original layout of the building, take the space as the guidance, and arrange future functions based on the original layout.

Photo Credit: As you see - Wang Ting



## Holiday Inn Express Hong Kong Kowloon CBD2

Richards Basmajian, Hong Kong

Lead Designer(s): Bernice Leung

**Winner in Hospitality: Hotel and Resort**

Description: The new 286 key Holiday Inn Express in Hong Kong Kowloon CBD2 has a narrow frontage and the client asked for a strong presence when looking from the street. This has been achieved with the vividly coloured backdrop to the waiting area, facing the clear glass entrance door.

While seemingly abstract, the backdrop represents a nest formed by a tangle of branches and twigs with bright flashes of colour suggesting peacock feathers. The nest gives comfort, warmth and protection to the weary traveller.

Photo Credit: Grischa Rüschenndorf



## FORESTIS

ASAGGIO GmbH, Italy

Lead Designer(s): ASAGGIO GmbH

**Winner in Hospitality: Hotel and Resort**

Description: FORESTIS is located in a place of peace and power, with nature as its centerpiece and the Dolomites directly in front of it. Connecting corridors and areas such as the restaurant and spa were brought into the underground. With the idea of the original healing place, namely the century-old main building of FORESTIS, all the rooms face the sun. The four causal elements, spring water, air, sun and climate, are represented by the interior design and architecture with the use of four natural materials.

Photo Credit: FORESTIS



## SOHO

**Creep Design Studio, Taiwan**

Lead Designer(s): CHIA-CHI KUO, YU-ZU CHUANG, SHIH-YAO HUANG

**Winner in Hospitality: Hotel and Resort**

Description: Art contains all kinds of sentiments in life, mixed up with the sensory speculation and reflection from society by the artists, they measure every step they take, express their imagination of the world with their different emotions, to create that art belongs to the life of essence.

The space in this building includes five different styles, which interpret the colorful Sylvie Fleury, the multicultural art deco, the social warnings by Banksy, the quiet and gentle Giorgio Morandi, and the black representative Pierre Soulages.



## Amber

**H.Lotus Interior Design, Taiwan**

Lead Designer(s): HSU TZU TZU

**Winner in Hospitality: Hotel and Resort**

Description: This project sits in a rising area, in order to make the space more inclusive, the local construction company that had cut its teeth on education is now focus on elevating the quality of life of the residents.

Upon entering the lobby, the matt black wall with embedded details behind the counter, and in between lies the gray marble flooring, building on the luxurious ambience in the room. The amber-like light radiates yellow warm rays, and the lights reflect on the uneven mirror ceiling.



## Four Seasons New Orleans Hotel

**Bill Rooney Studio, Inc. & BRSS Studio, LLC (same ownership), United States**

Lead Designer(s): Bill Rooney

**Winner in Hospitality: Hotel and Resort**

Description: Four Seasons Hotel New Orleans Design Narrative Guestroom:

New Orleans is a city that embraces a multicultural heritage, and celebrates life, alluring gardens, art, music, and cuisine.

Set on two riverfront acres that will be flanked by lush gardens, the design of the hotel is inspired by the sanctuary and allure of this botanic backdrop. It is this restful setting that the interiors become a foundation to celebrate the multi-cultural heritage of the city through art, food, and threads of historic influence.

Photo Credit: Christian Horan



## ZHL International Hotel

**TT DESIGN, China**

Lead Designer(s): Wayman VIVI

**Winner in Hospitality: Hotel and Resort**

Description: ZHL International Hotel is transformed from one of the factories formerly known as Fenggang Qiaonan Gold and Silver Jewelry Factory. In the soft furnishing design, modern, form, light and shadow, and jewelry elements are the core of the design. Through deconstruction and reorganization, new functions are formed on the basis of the original appearance of the building, complementing the eclectic, open and tolerant urban spirit of Dongguan City.

Photo Credit: TT DESIGN



## ibis Styles Bangkok Silom

**dwp, Thailand**

Lead Designer(s): Nampet Petruk

**Winner in Hospitality: Hotel and Resort**

Description: The new hotel in Bangkok's business district, just a stone's throw away from the famous Lumpini Park, will definitely be a popular choice for all types of travellers and the exciting F+B offering is sure to draw in the local crowd.

The 264 room hotel was designed in line with the Accor brand standards and to suit the immediate surrounding and the type of travellers that are drawn to this part of the city. The overall design concept marries Thai characteristics with modern touches, blending comfort and original design.



## GLINZ

**Megre Interiors, United States**

Lead Designer(s): Yuna Megre

**Winner in Hospitality: Hotel and Resort**

Description: Megre Interiors has developed the interior design of the new Ginza Hotels hotel. St. Petersburg is a modern city with a rich history, its unique architecture and special climate have become the starting points of the design concept of the fashionable Glinz chamber Hotel.

The main "highlight" of the project is the multifunctional zone of the first floor, which hotel guests can use at any time of the day. There is a reception desk, lobby, lounge area, business center, bar, as well as a small restaurant.



## Suzhou Zhongnan Villa

**Suzhou Industrial Park Renhai Interior Design Studio, China**

Lead Designer(s): Haihua Zhang

### Winner in Houses

Description: This project is located in the city of Suzhou in east China. Inspired by an ancient poem that reads, "My path has wound, through a sheltered hollow of boughs and flowers, to a Buddhist retreat," the designer moves the Zouma Tower, clamshell windows and arcades of Suzhou gardens into the mansion, injecting poetic quality into the space, and integrating with the life aesthetics of the Tang and Song Dynasties. In the mansion, the architecture retreats into the dark, and the residence shifts from shelter to spaciousness, from seclusion to brightness, leading to a connecting space that extends around the center area.

Photo Credit: Yunpu Cai



## Modern Villa with a past

**Dochia Interior Design, Canada**

Lead Designer(s): Adriana Mot

### Winner in Residential / Houses

Description: Most Canadian families have a link to the old world. As designers we often face the challenges of merging heirlooms and artifacts with a contemporary aesthetic. This is such a home where the interiors have been shaped at the intersection of nature with architecture, shapes of the past with those of the present. The rooms are permeated with light; some furniture is fluidly bonded with the architecture, like the floating dining room buffet suspended between two columns, while other, stands like art objects on display.

Photo Credit: Julia Bewcyk



## Deep Water Bay House

**3mm Studio Ltd., Hong Kong**

Lead Designer(s): Mike Choy

### Winner in Houses

Description: This house was conceived for art collector family who wanted to expand their living space and infused their home with both art and nature, tying a stronger connection to the hill peaking towards Deep Water Bay, Hong Kong – the veritable soul of the south – finding harmony, influence and poetry within.

The 3-storey house is divided into three distinctive parts: a welcoming dining, living space and kitchen for family and friends; a flexible display area for the artwork within the house; a calm and intimate resting quarters on the upper two floors; While all areas are infused with a wide range of styles of artwork and sculptures collected throughout the decades.

Photo Credit: Photo by Edmon Leong and Mike Choy



## An Arborous Feast for the Heart

Long Dian Interior Design Co., Ltd., Taiwan

Lead Designer(s): Yan-Sian Liao

Winner in Houses

Description: An Arborous Feast for the Heart is a six-story house villa of 380 square meters, with its first story for a garage and a section for receiving and entertaining guests, the second floor for the living room, dining room and kitchen, and the third to the sixth floor each for a suite with a bath. The house is long and narrow, and natural light comes in through the building's narrow sides. To make the space look open and bright as well as create a vibe of roaming in the woods dancing with nature is a challenge in the design.

Photo Credit: Chris Fan



## The Call of Wildness

Sunny Neuhaus Partnership, China

Lead Designer(s): Robin Wang

Winner in Houses

Description: Breaking the limitation of national boundaries and introducing the American vacation concept, modern luxury combined with Indian customs. The rugged texture and material incorporate classical charm and heroic western expressions, the earth color scheme and warming log as if place ourselves in the mysterious nature.

Photo Credit: Sunny Neuhaus Partnership



## Ginkgo Space

Wells+Wang Architects, China

Lead Designer(s): Simin Wang

Winner in Institutional

Description: Ginkgo Space is a sports physiotherapy resort for senior people. Body rehabilitation is usually a painful process that takes time and patience. Learning from traditional Chinese Jiangnan gardening, the design aims to create a cozy space for customers to get treatment and relax. Enter from the main entrance, visitors will shuttle between each functional space. Programs are organized with a mezzanine, forming a tortuous sequence with rich scenery. These framed scenery brings more immersion fun, while also disrupting the certainty of space feelings, so that people may take the resort more like a garden without boundary rather than a box with walls.

Photo Credit: Wells+Wang Architects



## Beijing Huiwen Middle School

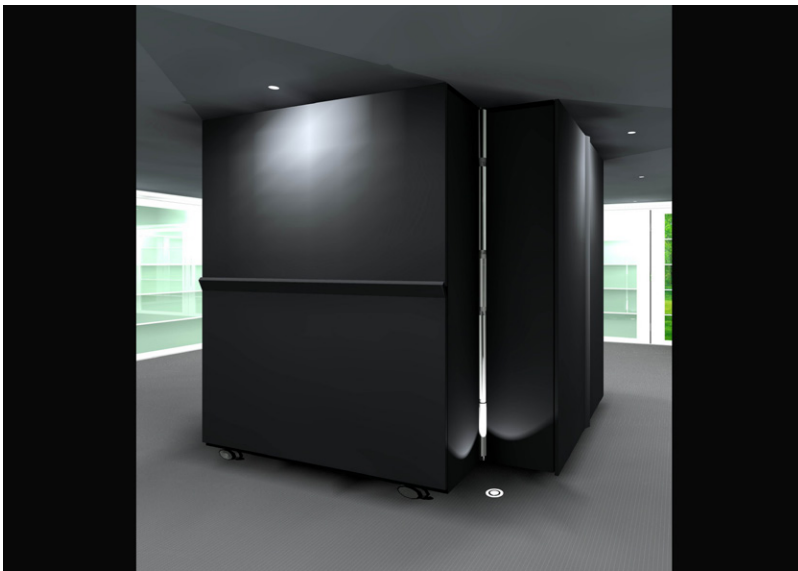
**Wells+Wang Architects, China**

Lead Designer(s): Simin Wang

**Winner in Institutional**

Description: A series of new spaces and installations contributes to the 150-year history and culture of Beijing Huiwen Middle School. Advanced materials and laser positioning technology are used to present the school motto through optical illusions. The historical scenes restored in the school museum brought the alumni back to their common memories. With sound field and viewing angle calculation, the optimal solution is implemented in the design of the concert hall.

Photo Credit: Hantao Zhou, Feng Zhao



## column

**Setmund Leung Design Ltd, Hong Kong**

Lead Designer(s): Setmund Leung Kam Biu

**Winner in New Concepts**

Description: The size of column : 3 m (L)x 3 m (W) x 2.4 m (H).

A cabinet with wheels is used for hiding the house's four main living areas; the living room, bedroom, study room and the kitchen. The center is a rotating bathroom, connecting these four areas which make the whole combination just looks like column

Structural of Column :

- The first cabinet is the bed room equipped with bed and wardrobes;
- The second cabinet is the living room with TV/audio storage combination, retractable sofa.



## Bowtie JP Health

**Xlms Limited, Hong Kong**

Lead Designer(s): Ian Hau

**Winner in New Concepts**

Description: A new kind of multi-disciplinary healthcare centre, 'Bowtie JP Health'. The design aims to rethink health care design with a focus on Wellness and preventive health for a millennial cliental.

The project co-founded by Hong Kong's first virtual insurer Bowtie, and a leading primary care provider JP Partners Medical. The project leverages medical technology and lifestyle to give clients better personalised primary care. The design makes use of distinctive curves and softer colours to create an ambience.

Photo Credit: Steven Ko



## Flow Bar

**Jingle Design, China**

Lead Designer(s): Zhou Bo

**Winner in New Concepts**

Description: Entering from the entrance, grand modern artwork on the ceiling will grasp your attention. In the shape of round water drop, the artwork demonstrates its beauty in vertical and horizontal order, constituting a symbol of contemporary art. With warm and silent light shadow, the artwork presents different pictures with the passing of time. Therefore, the space provides multiple experiences in an unexpected way, allowing guests feeling the pace of art.



## Zarsion Inherit Mansion

**G&K Architecture Design, China**

Lead Designer(s): Grace Kwai

**Winner in Other Interior Designs**

Description: A large amount of blank space, clean lines, and restrained decoration outline the contemporary life aesthetics of nature's course and unification. There are the flow of emotions, the change of time, the feelings of life, and the unique oriental aesthetic awareness used to sort out the connection between people, objects, and space. Walking in the quiet natural light at the reception hall, the intriguing light and shadow changes sculpt the beauty of the building.



## Zarsion Top Cloud Sales Center

**G&K Architecture Design, China**

Lead Designer(s): Grace Kwai

**Winner in Other Interior Designs**

Description: Located in the historical city of Tianjin, the space design of the sales center is themed with "Red Party", which creates a gorgeous visual feast through space construction by touching the boundaries of culture and imagination, so that visitors can enjoy the dream field. Echoing the continuous vault of the building, the interior uses distinct geometric elements to endow the space with a sense of story. The fine lines on the background wall of the reception area outline the arc-shaped vault, in which the sense of fluidity and softness lays the grand and elegant tone for the beginning of the space feast.



## The motor yacht 80 Sunreef Power

**Sunreef Yachts, Poland**

Lead Designer(s): Sunreef Yachts

**Winner in Other Interior Designs**

Description: The new 80 Sunreef Power is a universal multihull yacht for long cruises in ultimate comfort. Taking luxury and seaworthiness to a new dimension, this dynamic and elegant craft enters the Sunreef Yachts range, redefining the authentic power catamaran design. The yacht's dynamic hull and superstructure stretch the living spaces to the extreme, offering infinite options for a bespoke layout and décor.

One of the most spectacular features on board this 80 Sunreef Power is the master suite.

Photo Credit: Sunreef Yachts



## Solitude in the Woods

**Huang Yu Yuan Interior & Advertisement Design Co., Ltd., Taiwan**

Lead Designer(s): Yi-Chi Chen

**Winner in Other Interior Designs**

Description: This is a public facility project in an apartment complex. The design team adds natural elements to create the image of a forest. An arc grille resembling a birdcage sets the visual theme, conveying the impression that when people moves around like birds, there is always a warm place to return.

The counter in the lobby simulating water waves matched with the ceiling spreading like ripples creates rhythm in the space. The background wall carved with pine and cypress is embedded with a hidden cabinet, which is delicate and practical.

Photo Credit: Ar Her Kuo



## MixC IMAX Flagship - Shenzhen Bay

**Lead8, Hong Kong**

Lead Designer(s): Lead8

**Winner in Other Interior Designs**

Description: The IMAX Cinema brand by China Resources Land (CRL) is transforming the motion picture experience for audiences in China. The latest addition to CRL's cinema chain is the first luxury VIP cinema experience to be established in Shenzhen.

The design concept for the city-first venue took inspiration from the luxury hotel industry, bringing a distinctive, premium and immersive experience with a user-centric approach; one which looked to deliver beyond expectations.

Photo Credit: Lead8



## NANJING GLORIOUS MOMENT SALES CENTRE

**Harmony World Consultant & Design, China**

Lead Designer(s): Jiabei Dong

**Winner in Other Interior Designs**

Description: Nanjing Glorious Moment Sales Centre seeks a fashionable and modern environment with detail and quality for targeted visitors, full of vitality and pursuing a healthy and natural life philosophy. It locates in Nanjing, a prefecture-level city under Jiangsu Province. The designers absorb the concept of fashion and nature and integrate those ideas into the space. Entering the project, marble with rich patterns at reception gives a luxurious and elegant impression.



## Time Capsule, A Beauty Lab

**Rich Honour Design, Taiwan**

Lead Designer(s): Min Chien Yeh

**Winner in Public Building**

Description: Located in the suburbs of Shanghai, a skincare product factory transformed itself as into a multi-complex including sales and exhibition. Time is ethereal. The designs try to express the sense of times in the space. Endless reflections by mirrors create timeless. Images and lighting constantly changing in the spiral to create an immersive journey. Time Capsule provides educational and entertainment experience.

The lab is where the formula made.



## Library of Lixia District

**Vantree Design, China**

Lead Designer(s): Muchuan Xu, Minxi Cai, Shangzhao Yang

**Winner in Public Building**

Description: The project is located in Lixia District of Jinan, Shandong Province, surrounded by cultural, educational and creative commercial resources. As one of the eight venues of the cultural and archives center, the library occupies the 2nd to 4th floors on the southwest side of the center.

In the library block, we analyze and reconstruct the original situation to find pointcuts. After clarifying the overall optimization direction, through the analysis of the functions and structure of the traditional library, the functions and streamlines' relationships among them were reorganized and constructed.

Photo Credit: Vantree Design



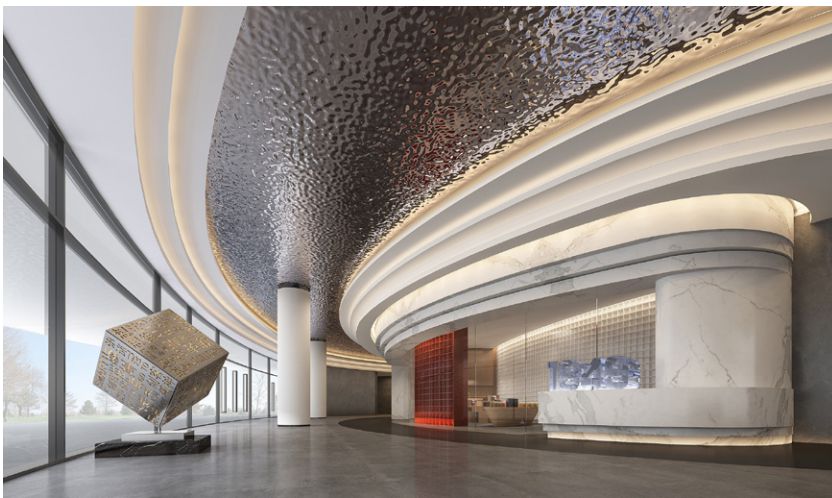
## Gaoxin Culture Center

**CHINA CONSTRUCTION SHENZHEN DECORATION CO., LTD, China**

Lead Designer(s): Ling Wang

**Winner in Public Building**

Description: Chengdu Gaoxin Culture Center is located in the south of the Dayuan Park in Chengdu High-tech Zone, at the intersection of Tianfu Fourth Street and Shenghua South Road. The planned gross floor area of the project is about 168,800 square meters, including about 100,900 square meters for the above-ground buildings and about 37,860 square meters for the basements. The cultural center consists of five venues and one ring. The five venues serve as the library, cultural hall, multi-functional theater, workers, youth and women's service center, and comprehensive experience exhibition hall.



## Chongqing-1949 Grand Theater

**CHINA CONSTRUCTION SHENZHEN DECORATION CO., LTD, China**

Lead Designer(s): Ling Wang, Yongtao Huang

**Winner in Public Building**

Description: Located at the foot of Chongqing Gele Mountain and within the ancient town of Magnetkou, Chongqing-1949 Grand Theatre is the first large-scale live-action theater in Chongqing tailored for the play Chongqing-1949 and the largest single indoor theme theater in the world. The theater has a total construction area of 25,000 square meters, a building height of 28.6 meters, and a capacity of 1,500 spectators.

Chongqing-1949 Grand Theatre incorporates the local characteristics of Chongqing into its design.



## Private Jet Terminal of Minsk Airport

**RECS ARCHITECTS STP SRL, Italy**

Lead Designer(s): Pier Maria Giordani, Chen Zhen

**Winner in Public Building**

Description: The project is to create the window of Belarus. This is the gateway of travel and communication for international elites. Here, people start to feel Belarus, and here, people have the last look back on Belarus before their return.

The interior design project for the new private jet terminal of Minsk covers reception hall, lounge, bar, meeting room, toilet, roof floor corridor and VIP saloon.

We used contemporary design language to present the space with a relaxed and elegant quality.

Photo Credit: Pier Maria Giordani e Zhen Chen



## Banco de México Museum

**RIWA arquitectura, Mexico**

Lead Designer(s): Ricardo Warman

**Winner in Renovation**

Description: The Banco de México Museum is an interactive museum whose objective is to disclose and explain to the public the functions and importance of the Central Bank. The main building of the Bank of Mexico, whose construction dates back to the beginning of the 20th century, was chosen as the venue for this new museum.

To fulfill their new vocation they adapted the basement, the ground floor and the mezzanine. On the main staircase there is a video mapping experience over the stained glass window that was designed but never materialized.

Photo Credit: Jaime Navarro



## XC273 by XCOMMONS

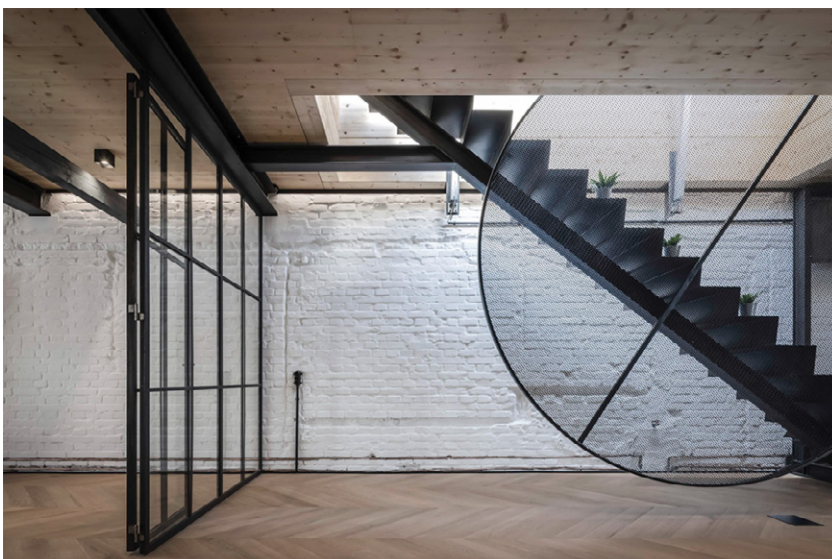
**dongqi Design, China**

Lead Designer(s): JIANG Nan

**Winner in Renovation**

Description: Situated in the heart of Shanghai city, the three-story old factory that we was commissioned to renovate presents itself as a historical ruin where the raw structure was truly exposed in all its magnificent. Conscious of this beauty, we developed its own approach that enhances the peculiar characteristics of the building by creating a contrast between the old and new finish materials for this new fashion and art hub that is going to break the rules of the retail experience.

Photo Credit: Raitt Liu



## Art Deco Loft Ludwigstrasse

**FACE | Büro Florian Schätz, Germany**

Lead Designer(s): Florian Schätz

**Winner in Renovation**

Description: Once a butcher's shop, the building was a famous meeting point for the people of the baroque town of Passau. Part of the heritage-protected ensemble, the building from 1928 is today used as a commercial and residential building. A bronze Angel stands prominently over the facade flanked with two obelisks, restored as part of the 140m2 Art-Deco Loft.

The old timber roof was replaced with cross laminated timber plates. Uncovered fair-faced masonry characterizes a long whitewashed wall as an ornament with post-industrial scars.

Photo Credit: Rainer Tapper



## Beams of Light

xingshi-studio, Taiwan

Lead Designer(s): Teng-Sheng Tsao

**Winner in Residential**

Description: The simplicity and coziness of the interior design epitomize a personality that includes both modernity and the timeless aesthetics.

Making good use of the big space and window installations on nearly all sides, the designer applies an open-plan layout to ingeniously divide the common and the private areas. Light colored stone material's reflective feature combined with the moonlight landscaping, on the other hand, draw attention while one enters the space.

Photo Credit: Weimax Studio



## IDEO Q SUKHUMVIT 36

Vela Interior Co.,Ltd., Thailand

Lead Designer(s): Sithikorn Benjavanichroj

**Winner in Residential**

Description: Using technique of curve and line is the fundamental concept for this project. Then, applying those technique through the implementation of materials and finishing surfaces together with utilization of furniture function in each area, are what the procedure of work we did. Besides, the main choice of color we used are also focusing on the light brown wood texture combined with some luxury accents such as matt gold finished or light gold mirror. Therefore, they make the overall atmosphere look cozy, homey and have a touch of luxuriousness at the same time.



## Modern Farmhouse

Marlaina Teich Designs , United States

Lead Designer(s): Marlaina Teich

**Winner in Residential**

Description: For this project, our design studio focused on creating a full home that had high-end style but for real life living. Since we were on the project from the ground up our goal was to use the bare framing as a blank canvas to fabricate a home that is a fresh take on the classic modern farmhouse style, layered with character. It was important for us to consider the home owner's lifestyle by prioritizing a layout that encourages communication and connection.

Photo Credit: Patrick Cline



## Lake Lantern

**Evans Lee Design, China**

Lead Designer(s): Evans Lee

**Winner in Residential**

Description: In this project, the designer creates space as pure background. With multiple interaction in life, poetic novel residence comes into being, like an artistic gallery. Minimalism does not mean fixed form or single order. The designer has years of experience in infusing minimalism in residents' life. Based on the concept of "comprehensive space and spontaneous interaction", the designer divided the space to demonstrate completion and visibility as much as possible, presenting minimalism through vast space, eliminating limitation and reconstructing landscape.

Photo Credit: Jack Qin



## HAUS AM SEE

**MARCEL EBERHARTER Interior Architecture & Design, Austria**

Lead Designer(s): Marcel Eberharter

**Winner in Residential**

Description: We developed the concept for this lakeside home a long time before construction commenced. The earlier we are brought on board, the more comprehensively we can contribute our expertise – and tailor solutions to the benefit of the client. The client's desire was for a place offering seclusion, recreation and relaxation.

Architectural intentions and environmental imperatives merge at the point where original and organic materials play a major role – such as domestically quarried rock, locally-felled timber, nubuck leather and linen.

Photo Credit: Eberharter GmbH



## Reborn Reunion Rebirth

**Olmo Space, Taiwan**

Lead Designer(s): Emma Liu

**Winner in Residential**

Description: Part of human nature craves security in all forms. With this in mind, the designer came up with an astoundingly primitive yet modern take on the beautiful design of this property. Using the cave as the core concept, the designer replicates a cave-like and rustic space with comforting color tones to resemble the idea of the human womb. The living room alone evokes the nostalgic feel of residing in the cradle of life. The flowing pattern symbolizes the fluid of life, amniotic fluid.

Photo Credit: Ar Her Kuo Photography Studio



## Bellagio

**1Sec.Left Design Studio Limited, Hong Kong**

Lead Designer(s): Kason Chi Yuen Chung

**Winner in Residential**

Description: Hong Kong is a small place, but a big city to live. After work for a half entire life, finally facing the harvest period. Client couple would like to slow down a little bit, think about the future of life. Earned of this, designer uses an open-plan style, and according to clients' living habit to design the house. Open-plan design unleashes space potential, it brights more different feelings to the visual, broaden your horizons. About the color and materials, designer mainly uses dark wood color, and floor uses grey marble with clean vein lines.



## Poly • Hankou Mark

**More Wonderful Design, China**

Lead Designer(s): Yirong Yang

**Winner in Residential**

Description: The fusion between time-Honored Chinese history and modern western culture makes Hankou unique with distinctive design and landscape. This project, located in the flourishing Hankou downtown, Wuhan (capital of Hubei Province), pays homage to the traditional and modern elements from China and western countries.

In this project, the designers put the circles as specific symbols. Refining visual elements and innovating artistic form from the modern classic, the designers integrate the "minimalism and elegance" philosophy and exquisite details into sales center, allowing guests enjoying the ultra aesthetic experience.

Photo Credit: Jian Feng



## Hengqin International Finance Center: 245 square meters size

**Bluemoon Design, China**

Lead Designer(s): Kelly Lin

**Winner in Residential**

Description: With the beautiful scenery of blue sky, lucid sea and orderly buildings, a dialogue between urban culture and interior emotion has been conducted. Based on the dynamic and pure condition, the designers endeavour to break the fixed limitation, maximizing the interests in life through a simple way via the artistic space. From the irregular figure sculpture, modern geometry to stylish chandelier and withered red flowers, the designers combine the aesthetic elements with the daily life and leisure, evoking residents' infinite imagination for happy life.



## Jiangxin Yin Club, CMSK

**G-Art Interior Design (Shanghai) Co., Ltd., China**

Lead Designer(s): Yijun Jia, Yuchen Lin

**Winner in Residential**

Description: Based on the profound cultural history of Nanjing, it adopts the "three-step" space to create an exclusive Oriental ceremony, and integrates natural inspiration into the design, bringing concise lines, but the various structures evolve through the way of volume and interspersion, which greatly expands the space. Chinese traditional ink painting is vivid in shape, so designers take it as a creative idea to break down the matching of colors and materials.

Photo Credit: TOPIA



## Taicang GreenTown Sky Mirror Lake Sales Center

**Bluemoon Design, China**

Lead Designer(s): Kelly Lin

**Winner in Residential**

Description: As the last pure residential community on the shores of Sky Mirror Lake, the project boasts remarkable advantages in cultural, educational and commercial sectors, creating a high-quality living climate for humanity.

The concept of the lake wave merges with the fabric fibre, exuding a free-flowing living atmosphere. The fusion between red and black fades away slowly through the extension of the mirror, stimulating the viewer's fantastic

Photo Credit: Ao Xiang



## RITZ-CARLTON MIAMI BEACH PENTHOUSE

**Britto Charette, United States**

Lead Designer(s): BRITTO CHARETTE

**Winner in Residential**

Description: Our project at the Ritz-Carlton Residences in Miami Beach, Florida is a 6k sqft penthouse that sits atop an adaptive reuse building & provides captivating views. We have created a design for our clients that is modern & elegant, honoring Piero Lissoni's architectural vision for the building. Adapting the former hospital to our clients' needs has posed interesting challenges & opportunities for our team.

We dropped the 15' ceilings to 12' to hide the mechanicals & provide a homier atmosphere.

Photo Credit: Britto Charette



## CASELLUM

**Vp Interiorismo , Mexico**

Lead Designer(s): Victoria Plasencia

**Winner in Residential**

Description: Located in the woods we can find Casellum, a project of VP Interiorismo worked alongside the architecture firm 3 Arquitectura and constructor Eduardo Gonzalez.

We design a modern industrial retreat where nature and design could coexist. Wood and steel finishes create the style guideline to this peaceful space, and the large windows increase the amount of light and air that flows in. An open space atmosphere full of freshness and breath taking views from every room.

Photo Credit: Tamara Uribe



## Urban Resort

**Snuper Design Inc., Taiwan**

Lead Designer(s): Cheng Wei Lin

**Winner in Residential**

Description: Situated in the heart of Taipei's metropolitan area, this interior design project is a high-ceilinged top-floor residential unit with its disadvantaged nature of the low beam line and the half-circle architectural form. However, with a thorough evaluation and resourceful planning, the designer has overcome all these obstacles by redesigning the staircase's direction, redirecting the upper light source to the lower space, along with compressing and releasing the spatial focus.

Photo Credit: Lee Kuomin



## Art Shoppe Lofts + Condos

**Cecconi Simone Inc., Canada**

Lead Designer(s): Elaine Cecconi

**Winner in Residential**

Description: Art Shoppe is a condominium project located in Toronto, Canada. The lobbies/amenities designed are 2787m<sup>2</sup>.

The condo was where a furnishings store called the Art Shoppe had been for decades, hence the link to art & design.

The amenities are sculpted to create vistas from one area to the next. Millwork acts as screens and room dividers, offering a peek into the activities beyond. The corridors occur at the glazing so that guests can enjoy views and daylight.

Photo Credit: Shai Gil



## Waterworks

**Cecconi Simone Inc., Canada**

Lead Designer(s): Anna Simone

**Winner in Residential**

Description: Reinventing a heritage-designated 1930s building, this 13-storey mixed-use project named Waterworks houses a food hall and new YMCA. The Art Deco exterior, juxtaposed with the raw industrial interior, creates a variation of aesthetics that provide inspiration for the interior design of the condominium common spaces and amenity areas.

The client asked the design team to respect the history and highlight the heritage aspects of the building in the interior communal areas.

Photo Credit: Ema Peter



## Mirror Image

**Smac Studio, Australia**

Lead Designer(s): Shona McElroy

**Winner in Residential**

Description: This duplex is owned by a young family who gave the designer enormous creative freedom. The home is modern with a touch of old-world Europe — as seen in the Venetian plaster finishes, marble bathrooms and herringbone floors. Despite having an internal width of only 4.8 meters and a shared wall with no windows, the home still has ample natural light and lots of elegant personality. Outstanding features include a curvaceous powder room, a cantilevered kitchen island that allows four people to sit face-to-face and a curved marble staircase at the entrance.

Photo Credit: Anson Smart



## Like an art gallery

**Flow Design, Taiwan**

Lead Designer(s): Jui Yi Tsai

**Winner in Residential**

Description: This is a 233-square-meter residence.

The owner couple are doctors, with frequent meeting needs, who do not like the lampblack, also have the habit of artwork collection, and buy this house to store up the most loved nearly 360 degrees of the mountain and sea scenery.

It hopes that under the busy high-pressure working environment, they can enjoy their collected artworks and the beautiful scenery outside the house, and completely relax their body and mind.



## Shakespeare's Garden

**Sunny Neuhaus Partnership, China**

Lead Designer(s): Robin Wang

**Winner in Residential**

Description: Nature is the eternal theme of creation. There are nearly 170 kinds of plants scattered in Shakespeare's books. The vines and flowers are abundant, giving full play to Shakespeare's romanticism and fantasy. Under the leading of European Renaissance style, the ideal living concept is interpreted into the modern trend.

The constellations pattern are carved into the mirror, reflecting the starry sky on a midsummer night. The arch structure of ancient Roman architecture brings out the classical theater-like feelings, giving full play of Shakespeare's fantasy situation.

Photo Credit: Sunny Neuhaus Partnership



## Fort 137

**Daniel Joseph Chenin, Ltd., United States**

Lead Designer(s): Daniel Joseph Chenin

**Winner in Residential**

Description: Located in Nevada along the western most point of the Las Vegas Valley with unobstructed views of the Red Rock Canyon Conservation Area to its northwest and Spring Mountain along the southwest, Fort 137 is an environmentally conscious home comprised of a series of connected rock masses emerging from the earth.

Panoramic glass doors on the north and south facades extend the living space beyond the architectural perimeter while providing cross-ventilation and daylighting, along with expansive views.

Photo Credit: Stetson Ybarra, Stephen Morgan, Daniel Joseph Chenin



## Presentedby x Doha Design District

**External Reference, Spain**

Lead Designer(s): Carmelo Zappulla

**Winner in Retails / Shops**

Description: Presentedby disembarks in Doha with its new flagship. With its trademark strategy Presentedby lands right in the middle of Doha's new centrality offering an ultimate retail experience created around Qatar's unique characteristics.

This project offers an ultimate retail experience inspired in Qatar's unique characteristics. Blending the dune landscape of Qatar and the tech centric redevelopment of Doha, Presentedby offers an exhibition space rather than a retail store where sneaker and streetwear obsessives can come together not only to shop, but also to feel, touch, discover and share their love for sneakers, streetwear and urban culture.

Photo Credit: 2G



## WOW Concept

### External Reference, Spain

Lead Designer(s): Carmelo Zappulla

### Winner in Retails / Shops

Description: WOW is an articulated project, with a digital marketplace that complements the online shopping experience through interactive systems. It is a spectacular point of sale where each floor is unique & constantly changing, making WOW a theatre of retail, with an iridescent scenography. WOW, blends reality with fiction, the physical becomes digital, and shopping becomes an immersive experience. From the entrance on the ground floor, the pink-painted statues have undergone spatiotemporal deformations which manifest themselves in pixelation to display cosmetic products.



## KAMA-ASA Shop

### KAMITOPEN Co., Ltd., EIGHT BRANDING DESIGN Co., Ltd., Japan

Lead Designer(s): Masahiro Yoshida

### Winner in Retails / Shops

Description: Concept - the rebar

The rebar is a stick-shaped rolled steel material formed from irregular nubs called ribs and joints that are used as a building construction material.

As KAMA-ASA Shop's policy is set on belief that good tools are made for good reason, it delivers to the customers excellent skills of craftsmen, which make kitchen utensils.

Therefore, the most appropriate for the shop's space was to show architectural skills of craftsmen.

Photo Credit: Keisuke Miyamoto



## Vivian Boutique

### SALONE DEL SALON, China

Lead Designer(s): Salone

### Winner in Retails / Shops

Description: The project is located in Zhengzhou, China, with an area of 135m<sup>2</sup>. Concrete and metal produce cool tones. Dotted by yellow and blue fabrics, the space is full of layers and an intriguing vibe. Orange-red ceiling and the part below are contrasting and complement the ambience of the hard-style space, subtly achieving a harmonious balance. To conceive a space unique to this brand, the designers explored the brand's culture and value with the client.

Photo Credit: INSPACE



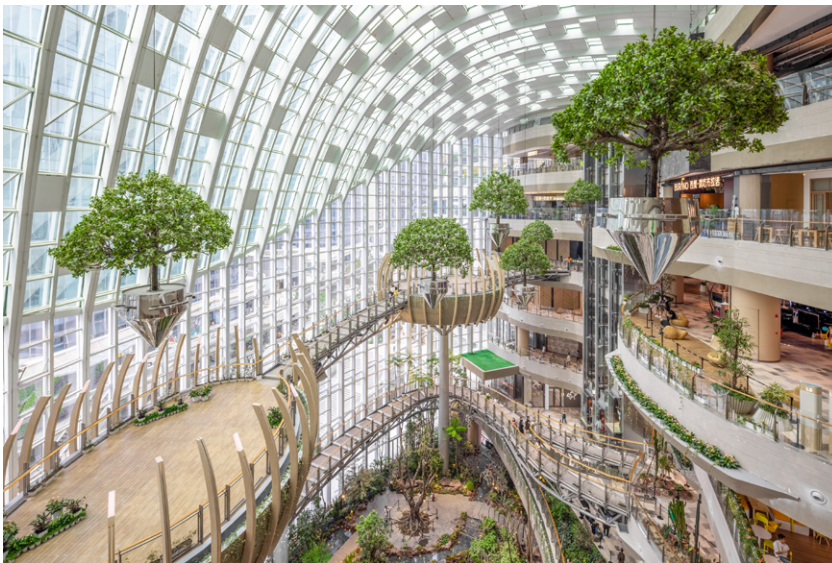
## Jing · Lear

CHICE, China

Lead Designer(s): Wenchuan Xie

**Winner in Retails / Shops**

Description: The project is a new business form layout of Lear, a brand rooted in Xi'an for years, in China Western Film Group TIME. It is positioned as a high-end customized brand. The design emphasizes the idea that less is more to show the classic style. The designer breaks the stereotype of traditional eyeglasses shops, puts art and utility in the space, takes golden and black as the main colors and, with a mindset of museum display, highlights the textures and details of each pair of glasses.



## The Ring

Lead8, Hong Kong

Lead Designer(s): Lead8

**Winner in Retails / Shops**

Description: The Ring in Chongqing is a groundbreaking ecological retail destination featuring one of China's largest indoor botanic gardens. The development marks the inauguration of Hongkong Land's new lifestyle retail series by the same name.

Setting new benchmarks for experiential destinations in China, The Ring's vision is truly innovative. The design seeks to deliver a new-generation social destination, an urban natural community, and a landmark regional commercial centre.

Photo Credit: Lead8



## WILLchá Flagship Store

CUN DESIGN, China

Lead Designer(s): Cui Shu

**Winner in Retails / Shops**

Description: WILLchá flagship store does not occupy a large area, but such a small space is endowed with multi-level spatial expression. In the layout of the plan, we used the method of geometric composition to divide the area of 100 square meters into a composite commercial body with nine spatial functions. The space not only has sufficient kitchen space, storage room and lounge area for staffs, but also contains ordering area, dining area, DIY tea-making area, customer service bar, tea display and retail area.

Photo Credit: Photographers: Jia Bin, Si You



## Valpaint Retail store & Showroom – Pragmatism in Retail Interior design

in Him's Interior Design, Hong Kong

Lead Designer(s): Samuel Lam

**Winner in Retails / Shops**

Description: The design inspired by the nature of paint, flexible, Liquid flowing, multi-usable, these features are being applied to form the best space planning.

Original floor plan of this store was a polygon, which being segmented perfectly by circles to two meeting areas, passage & storages with 65 sticks, all painted with different colour from Valpaint collection, working as partition and also the display at the same time; Interval between sticks enable enough lights but keep certain privacy to who using meeting area.



## SHOUGANG Park·CHANG'AN MILLS

Hongshi Design, China

Lead Designer(s): Hongqing Li

**Winner in Retails / Shops**

Description: The project is located in the northern part of Beijing's Shougang Park, which was constructed in 1919 and epitomizes the golden era of China's steel industry. As a new commercial landmark, Chang'An Mills inherits Shougang's industrial legacy while forging a brighter future. In doing so, we explored not only the synthesis of past and present, but the ability to create a shared space that meets the needs of the current consumer experience, while retaining dynamic and interactive elements.

Photo Credit: Jerry Yin, Xiaoguang Li, Yanqing Jiang



## TIKUU·The Exploitation of the Works of Nature

Beijing Wuxiang Space Architecture Design Studio, China

Lead Designer(s): Wang Yong

**Winner in Retails / Shops**

Description: The design of the offline store of TIKUU is based on titanium and quarries. By creating a scenario-based immersive new retail experience, TIKUU is an integrated space that features retail, coffee, and a DIY area. The flagship store in Chongqing also reflects the temper of Chongqing as an international city. The shop is located in an area with the highest traffic in Raffles City. Considering the hilly and varied typography of Chongqing and the new business demand, the designer intended to create an attractive scenario-based space that would put on a stage play of the story of titanium.

Photo Credit: Zheng Yan



## Dishao Optical

**Onexn Architectural & Spatial Design Office (Shenzhen) Co., Ltd., China**

Lead Designer(s): Wang Jingjing

**Winner in Retails / Shops**

Description: The project subtly combines contemporary context with Oriental charm. Pure geometrical elements and screen walls create a fluid, open space. Synthetic materials such as glass, metal and Tyvek paper are utilized. The project adopts Oriental simplistic aesthetics, and creates contrasting visual effects in the space. Inside the store's entrance, Tyvek paper forms a pure luminous space where eyeglasses are displayed.

Further inside is a relatively open space, which invites glass enthusiasts to communicate around a long table and attracts them to look through a door opening that creates fun interactive visual experiences.

Photo Credit: Yanming Studio



## Dongpo Foot Spa

**Lude Design, China**

Lead Designer(s): Bin Liu

**Winner in SPA / Fitness / Wellness**

Description: The large area of the dark tone palette extends the simplicity and strength of the brand, which makes the installation and lighting the finishing touch. Corresponding to the deconstructionist aesthetic of the space, the entire space is concentrated, layered, and harmonious with each other. The adoption of color and material is extremely simple, yet full of modernist comfort and convenience.

The detailed changes of the integrated effects between material and lighting everywhere are interlaced to create a rich sense of the scene.



## The Wellness Center at 53 West 53

**Ateliers Jean Nouvel, United States**

Lead Designer(s): Jean Nouvel

**Winner in SPA / Fitness / Wellness**

Description: Located on the 12th floor of 53 West 53, the striking condo tower perched above MoMA and designed by a Pritzker Prize-winning architect with interior architecture by Thierry Despont, the Wellness Center is on par with the world's finest spas and fitness facilities, set within a private environment. The over 15,000-sq.ft. full-floor club is the only interior space designed by the exterior architect.

The amenities include a full gym, separate high/low-energy fitness studios, a regulation squash court, golf simulator, men's and women's saunas and steam rooms and a spa treatment room.

Photo Credit: Evan Joseph; Giles Ashford



## Goodman Amenity Space

**KAMITOPEN Co., Ltd., Japan**

Lead Designer(s): Masahiro Yoshida

**Winner in Workplace / Office**

Description: Concept: The sea and nature

The Goodman Group was established 20 years ago in Sydney. It is a company that owns, develops and manages the industrial real estate. As a lot of employees spend a whole day working in the distribution warehouse, the demand to create a refreshing spaces for the workers has also risen.

This time, for the Stage 5 of a large scale business park, some amenity space in the distribution warehouse was planned to be designed.

Photo Credit: Keisuke Miyamoto



## LWPD DESIGN OFFICE

**LWPD DESIGN OFFICE, China**

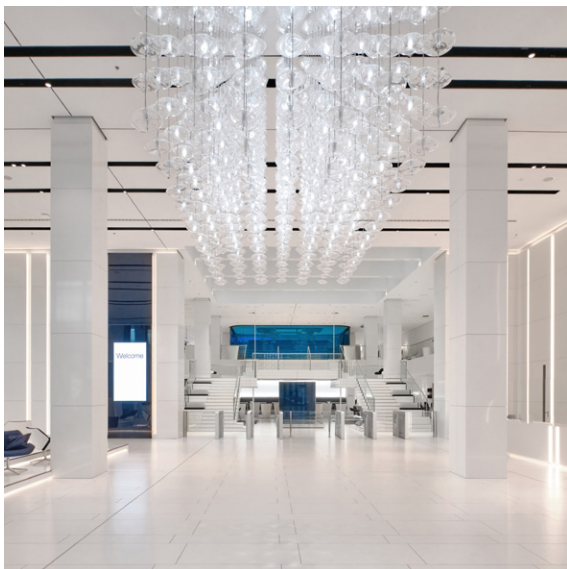
Lead Designer(s): WEIPIN LIN

**Winner in Workplace / Office**

Description: The interior design company is dedicated to the in - depth exploration and analysis of space form and oriental aesthetics. Focus on the integration of eastern and Western ideas. Create a people-oriented, natural and comfortable living space with pure geometric shape combined with wind, light, water and things.

The company's design philosophy can be summarized in nature, art, culture, numbers and life. Office as the carrier of delivering design value, needs to balance the office and display space and integrate various needs.

Photo Credit: JINXIANG VISION



## Olympus Campus Hamburg

**JOI-Design Innenarchitekten, Germany**

Lead Designer(s): Sabrina Voecks

**Winner in Workplace / Office**

Description: Appointed for their hospitality nous, the designers humanised this Japanese medtech firm's new 11-story, 377,000-ft2 EMEA HQ by infusing the flair of hospitality venues, thereby meeting the brief to encourage collaboration so employees achieve optimal customer solutions. Inspired by Japanese minimalism & transparent scientific "lenses", the lobby includes a programmable chandelier with 1568 twinkling diodes, glimpses of the Medical Showroom through a blue iridescent glass wall and a café lounge whose sunken floor heights create a calm haven.

Photo Credit: Christian Kretschmar for JOI-Design



## Globant Montevideo

**Aei Spaces, Colombia**

Lead Designer(s): AEI SPACES

**Winner in Workplace / Office**

Description: This project has 3 main strategies through which we faced that challenge. First, the poetic aspect of the design concept. We wanted to take a self-evident architectural element and transform it into an active and surprising character in the narrative of the office. We decided to work with doors. These elements, though simple in concept, guard the passage between where we are and where we want to be. Protect us from exterior threats and conceal secrets.

Photo Credit: Juan Fernando Castro



## Umbau Laufenhaus - Hauptsitz SIG

**Dost Architektur GmbH, Switzerland**

Lead Designer(s): Dost Architektur GmbH

**Winner in Workplace / Office**

Description: The distinctive structure of a raised and a longitudinal building always suggested a hierarchical division of the workplaces, management above, workers below. The project briefing foresees to open these structures. A more transparent working environment is to be created, allowing room for informal encounters and transdisciplinary exchange. Achieving the required workplace qualities in the existing building proves to be an exciting challenge. A more profitable new building, initially seems the more feasible solution - but from today's perspective, it would be difficult to justify and outweighed in terms of historical weighting.

Photo Credit: Andrin Wintere, büroureau



## "Touchdown", the adidas global sourcing office, is a space that takes sport seriously!

**Envisione Studio Limited, Hong Kong**

Lead Designer(s): Yvonne CHOW

**Winner in Workplace / Office**

Description: Entering the lobby generates drama, like emerging into a great sports arena through the players' tunnel. The multipurpose central pitch engages. Moveable bleachers allow audiences to encourage participants, and business-class shower facilities allow players to cool down and maintain hygiene.

Zoning is denoted through the confident use of primary colours. Wayfinding is encouraged with mesh or acoustic panel ceiling over main walkways - while the floor emulates a running track.

Photo Credit: Roy Esterhuysen, and Scott Brooks



## Forerunner Ventures

**FENNIE+MEHL Architects, United States**

Lead Designer(s): Jenna Ruth

**Winner in Workplace / Office**

Description: Forerunner Ventures puts itself at the intersection of insight and foresight, discovering teams who use innovation to solve unique consumer-focused problems. They wanted a sophisticated space that reflects their own built-to-last attitude and inspires every entrepreneur.

In 8,500 SF of top-floor space within San Francisco's Presidio, FENNIE+MEHL created an aspirational home base befitting of Forerunner.

Entering through a darkened passage with the black-on-black logo as a guide, one emerges into the naturally lit main room, the site of the Collaboration Café and lounge with its coffered ceilings, a nod to timeless and historic San Francisco home design.

Photo Credit: Casey Dunn



## CIMET Group Headquarters

**CIMET Arquitectos , Mexico**

Lead Designer(s): Sholem Cimet & Yoram Cimet

**Winner in Workplace / Office**

Description: CIMET is consortium dedicated to architecture, construction and real estate development, its headquarters occupy the 2 topmost levels plus roofgarden of the Torre Glorieta Cibeles located in Mexico City. The design of the space takes into account the necessity of these diverse activities, departments & their relationship, striving to create harmonious, comfortable spaces where all members can feel inspired to create, solve, perform and unfold best; a key objective was to make everyone feel at home by employing a combination of specific light, material and spatial combinations.

Photo Credit: Luis Gallardo & Jaime Navarro



## Rattan Town's Memory

**Sunny Neuhaus Partnership, China**

Lead Designer(s): Robin Wang

**Winner in Workplace / Office**

Description: Baisha, a rattan town with a history of 800 years, contains rich "ancient charm" of traditional culture. The rattan craftsmanship has been passed down from generation to generation with Baisha people, and the rattan weaving culture has been deposited for more than 900 years and nurtured Baisha generations. Rattan is capable of describing the ups and downs of Baisha for centuries.

The project traces the Lingnan culture by focusing on the ancient Lingnan lane scenery and non-inherited craft and Santang Academy.

Photo Credit: Sunny Neuhaus Partnership



## CR Power Headquarters Office

Leading River Interior Design (ShenZhen) Co., Ltd., China

Lead Designer(s): Wayne Chen

**Winner in Workplace / Office**

Description: Based on the design of the central core tube of the building and taking advantage of a floor-to-ceiling glass curtain wall, which gives the site good daylighting and visual openness, the design team customized and optimized a spatial strategy that balances rationality and humanity, to respond to the human-oriented brand values and the corporate spirit of openness and sharing that CR Power upholds. The design abandons the traditional form of workspace, but creates a simple, natural and efficient modern headquarters office that enhances the connection between the company's teams and their clients and meets diversified needs of work, life and communication.



## Waltz

**Chung Yuan Christian University (R.O.C.), Taiwan**

Lead Designer(s): Chien Ming Lai

**Winner in Apartment**

Description: At the transient convergence of light and shadow, the tender threads dance along, swaying a gentle waltz.

With light, one can understand the world with clarity. The project is a fusion of modern lifestyle aesthetics with customized spatial functionality, resulting in a delicate waltz.

Located in a west-facing high-rise building, the design consists of warm tones of red-orange light at sunset filtering through the floor-to-ceiling windows. To preserve the existing lighting conditions of the building, classical moulding and imported Spanish tiles complement each other, thereby extending the light and shadow variation effects to the materials.

Photo Credit: Cafe Photography



## U innovative institute library

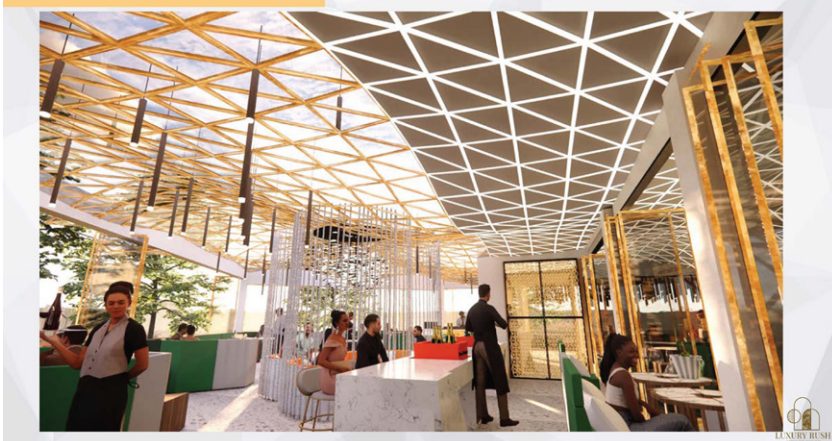
**Domus Academy, Italy**

Lead Designer(s): Yilin Cui

**Winner in Exhibition / Gallery**

Description: Our propose project is to design Institute Library. The location is Nuova Accademia di Belle Arti, Via Carlo Darwin, Milan. The User are design students. The concept is "U" isn't come from University but Is the U which also come from Union, Unique, Unity, Uni - friendly. The most important point of our design is to connecting a space, people and knowledge. We have design categorized of furnitures that transform by the concept keyword to improve our vision, It's about to created an adaptive space design.

## SHATTERING THE GLASS CEILING



## Interior Design Collab: Veuve Clicquot

**IIE Vega (Johannesburg campus) , South Africa**

Lead Designer(s): Abigail Bothner, Jemma Rose, Legae Moeng, Norma Human, Tshagofatso Choenyane

**Winner in Hospitality: Bar and Restaurant**

Description: This project formed part of the BA in Interior Design 3rd year curriculum at IIE Vega. We were tasked to design to a bar for Veuve Clicquot.

The fictional brief: Veuve Clicquot wants to expand and design a flagship bar in Rivonia, Sandton, South Africa and will work with renowned chefs to create a great taste experience. Customers are very focused on experiences and how they experience spaces, products and brands. The look and feel of our flagship bar should be accessible luxury.

## A Transitional Place of LOVE



*This project is designed as a transition hotel for families who have been through incarceration and trauma that seeks love, help, and support.*

### Project Brief

This project is a transitional hotel designed for a single parent who was incarcerated and their two children. The inhabitants will live in this "HOME" for three months. While working to pay for their lodging is a vulnerable opportunity to make connections and get to know their children more when living together.

### Design Intention

"Family" plays an influential role in a person's life, especially for people who were incarcerated. Parents always look after their children since they are born. However, this is the time for children to show their love, help, and support to their parent. With the children's help, they are more likely to get back to the life they hoped to have.

I aim to create an enjoyable spatial experience for the parent and their children to stay and spend as much time as possible. This room is not only a resting space but also a playground for creating joyful memories.

## A Transitional Place of LOVE

School of Visual Arts, United States

Lead Designer(s): Hsiang-Ting Huang

**Winner in Hospitality: Hotel and Resort**

Description: Project Brief:

America has the highest percent of children living in single parent households in the world at 23%. This project is a traditional home designed for families who have been through trauma and incarceration and their child. The inhabitants will live in the "HOME" for three months. While working to pay for their lodging is a valuable opportunity to make connections and to get to know their children more when living together.

Design Intention:

"Family" Plays an influential role in a person's life, especially for people who were incarcerated.



## Where is the memory

Savannah College Of Art And Design, United States

Lead Designer(s): Jiawei Zhi

**Winner in Hospitality: Hotel and Resort**

Description: Where did my memory go? How old am I? Where I am?

These are not the questions that come to mind in older people with Alzheimer's disease. The design is a medical facility that provides a respite space for elderly people with Alzheimer's disease.

The space provides a comfortable recuperation environment for the elderly through the guidance of color and structure.

## Ally- A center for Children Psychological Trauma Recovery

Savannah College of Art and Design, United States

Lead Designer(s): Yue Che

**Winner in Institutional**

Description: The design focuses on the increasing possibility of psychological trauma of children affected by the pandemic, due to restrictive policy on closure of school, which is students' only source of trauma-informed care and support. The purpose of the design is to try to find how the interior design helps traumatized children recover, in order to address the lack of design with healing function integrated with school. The design implications are dedicated to motivating users to engage in social activity and immersive experience, therefore improving the recovery efficiency of psychological trauma.





Pediatric Exam Room Perspective | Page 11

## Oasis Medicare Clinic

Cape Peninsula University of Technology, South Africa

Lead Designer(s): Jaime Scholz

### Winner in Institutional

Description: The primary care clinic focuses on wellness visits, physicals, vaccinations, screenings for illness, and acute illness and/or injury care for all patients. With a strong focus on an inclusive design, we ensured specialized kitted examination rooms for pediatric, bariatric, disabled, elderly and the general patient. The flexible special design allows for growth in the clinic. We aimed to be environmentally conscious and reuse or refurbish the existing walls instead of demolishing and rebuilding.



## Gull Sight Study Study Center

Savannah College of Art and Design, United States

Lead Designer(s): tony wu

### Winner in Commercial / Renovation

Description: A new interior design in the Patricia R. Guerrieri academic commons will provide students at Salisbury University with a perspective that enhances their learning environment. This new design will include plans that provide each student study space with a variety of environmental options for different types of learning. Moreover, the design will enhance the flexibility of the space, so the student can feel comfortable studying, relaxing, or interacting with others.



## Green booster

Savannah College of Art and Design, United States

Lead Designer(s): tony wu

### Winner in Retail / Shops / Renovation

Description: Think about a space, and that whatever you do in this space is one step closer to reaching a healthier version of yourself. Nothing could go wrong, for architecture has become your teacher and friend; the architecture itself will guide you while you are in it. All those around you are striving for the same goal. It is a domain of wellness, where visitors have the freedom, safety, and support systems to discover the resources inside to improve physically, emotionally, or mentally.



## SOUL CAVE

Savannah College of Art and Design, United States

Lead Designer(s): tony wu

Winner in Retails / Shops / Renovation

Description: Grab the item you want and pay for it. That's how retail stores work nowadays. Just like a machine, without emotion, without human warmth. Customers today do not want to communicate with a brand. They could care less about the brand's story, culture, and point of view. If retailers continue to depend on the brand, and its logo, that brand will lose its meaning, the words hollow, emptied of content. Eventually, the customer will lose the incentive to purchase items of this brand, and their passion will inevitably fizzle out.



## EVOLUTION

Guangxi Arts Institute, China

Lead Designer(s): Esther

Winner in Retails / Shops

Description: The design idea comes from Malevich's plane constructivism and the supremacy of the former Soviet Union. Combined with reality, we can deduce the plane step by step, which may be round, line or square, to show the sense of dislocation of space. The purpose of this architectural scheme is to show a new business model (no sale, scientific and technological intelligence). We give space and architectural significance, and it is not just an empty shell, The meaningless architectural space is just a nice rendering.



## The "North" in South

Savannah College Of Art And Design, United States

Lead Designer(s): Jiawei Zhi

Winner in Retails / Shops

Description: Ice sports are less popular in the south than in the north. But that doesn't stop ice sports from spreading in the south. People love ice and snow sports should not be restricted by the region. Tourism city in a city without snow, through the redesign of Retail store to arouse people's love for ice sports.

Savannah is a very beautiful city, and many people from the South come to spend their holidays in the hot summer. Most of Savannah's sportswear stores are yellow in color.

Photo Credit: Jiawei Zhi



Flagship retail store project 3

## Burnt Retail Store

IIE Vega (Pretoria campus) , South Africa

Lead Designer(s): Elizabeth Botha, Natasha Lettau, Wyonna van Wyngaardt, Bonolo Tshidi  
**Winner in Retails / Shops**

Description: This project formed part of the BA in Interior Design 3rd year curriculum at IIE Vega. The aim of the project was to create a retail store that aligns with younger people's values and passions and create a brand experience.

Burnt is a fitness fashion brand that makes high-performance activewear which can be used for a wide range of activities. Burnt prides itself on creating good quality activewear that is still fashionable and can still be worn every day (Burnt, 2021).



## Old Street

Chienkuo Technology University CTU, Taiwan

Lead Designer(s): TSAI, SHENG-CHOU

**Winner in Workplace / Office**

Description: Sanxia was an early distribution center of camphor, tea and cloth to be exported from Taiwan. Inspired by the old streets of Sanxia, With decorated archways and brickwork designed in a Baroque style, I combined modernist aesthetics into my design and rebuilt the images of the streets of Sanxia, making the structures with glass and iron. My intention is to show people who enters this space my way to express the imageries of the old streets of Sanxia.

# project management



## design with FRANK software

### Design With Frank, United States

Lead Designer(s): Chloe Fan

**Winner in Drawing, 3D, site layout, Floor plan, and Architectural software**

Description: FRANK is a smart home design software with real building materials and furniture databases. FRANK empowers people to design dream homes and shop for all the products they need to realize their projects. We make designing in 3D as easy as dragging and dropping in Figma. Our app keeps track of quantities and costs in real time all in the web browser.

FRANK is merging design and materials sourcing in one place.

Frank is revolutionizing design software.

**construction  
product**



## SUPERSLIM

**Centrvet, Russian Federation**

Lead Designer(s): Alexander Vorontsov

**Winner in Electrical & Lighting Systems and products**

Description: Minimalistic lighting system developed by CENTRSVET. It is notable for its ultra compact dimensions and allows to fully illuminate any space.

A slim line of the surface-mounted track has calibrated dimensions. Compact 11 by 17 mm dimensions. It can be used on ceilings, walls and in inner corners. It allows to create an accent in the space, highlight a zone and create a lighting effect.

The products range includes luminaires with diffused, directional and reflected light.



## Audiovisual attractions at the House of Hungarian Music, by AV system integrator, INTERTON Group

**Interton Ltd., Hungary**

Lead Designer(s): Géza Balogh

**Winner in Electrical & Lighting Systems and products**

Description: The exhibition at House of Hungarian Music is a journey in time and space, where we can discover the life of music throughout the centuries. The unique interactive exhibition at House of Hungarian Music educates and delivers experience in such a way that the installed audio-visual systems remain almost invisible to the visitors. The AV attractions are partly controlled by a central unit, and partly by stand-alone systems. The centrally controlled installations of the exhibition integrate classical AV devices and communicate with the peripherals via a fully IT compliant UDP network. Photo Credit: Interton Ltd.



## Super Collection

**Bankston Architectural, Australia**

Lead Designer(s): Matiya Marovich (Sans-Arc Studio)

**Winner in Finishes: Kitchen, bathroom, decorations... etc**

Description: The Super Collection largely draws inspiration from the Radical Design Movement of the 1960s, known for its avant-garde approach and marked departure from traditional design practice. This period heralded a new way of thinking, blurring the lines between art and architecture, encouraging daring explorations of shape, colour, and material.

These principles have served as the foundation of the Super Collection and are reflected in each product. Playful geometric abstractions and unique forms are balanced with highly functional design, delivering a range that feels both usable, yet highly expressive.

Photo Credit: Vic Zschommler-Campaign Photographer, Jonathan VDK-Bowden Brewery, Brian Ferry-Civilian Townhouse



## YiBrick

**Yi Design Company Limited, China**

Lead Designer(s): Yi Yin

**Winner in Flooring & Concrete materials and structures**

Description: YiBrick contains over 90% recycled ceramic, locally invented and made in China, where 18 million tons of non-degradable ceramic waste are produced every year. It is a permeable brick that can be used as pavement for sponge cities, improves the ecological environment and biodiversity, alleviating waterlogging problems, water resources shortage, and urban heat island effect.

The design is to solve the problem of ceramic waste management and research the possibilities of creating 100% recycled ceramic materials, to produce in large scale quantity to take care of all the wastes, and to promote the idea of regenerating recycled ceramics.

Photo Credit: Yi Design Company Limited



## i6®

**Big Ass Fans, Australia**

Lead Designer(s): Jay Fizer

**Winner in Heating /cooling systems and products**

Description: The i6® permanent-magnet motor, airfoil systems, and industrial style motor housing are designed exclusively by Big Ass Fans, while its patent-pending SenseMe™ technology and mobile app were developed in-house. We took all of the power and efficiency of our iconic industrial fans and created a smart fan that fits where you live, work, and play every day! Designed to create virtually silent airflow that is proven to feel 6°C cooler than the current room temperature, i6® features an array of automated controls and custom options, and an elegant design for all spaces.

Photo Credit: Big Ass Fans



## M-Pwr Smart Doors

**Masonite, United States**

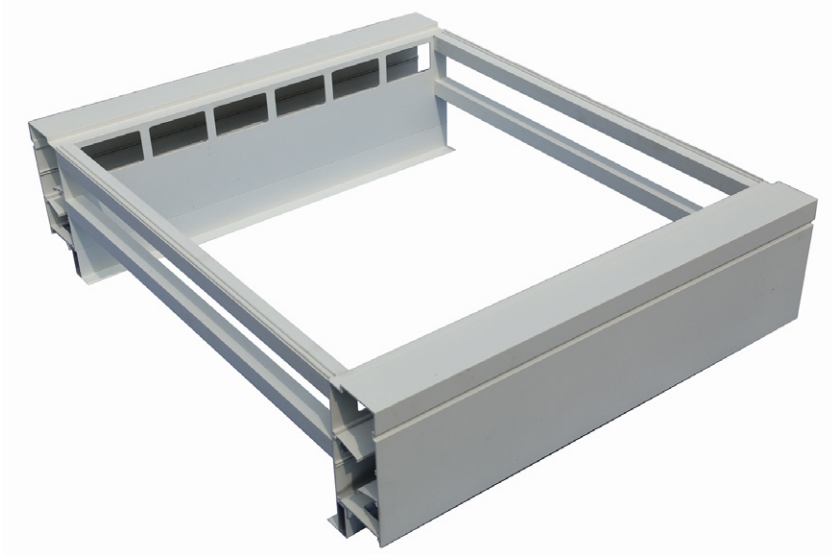
Lead Designer(s): Cory Sorice

**Winner in Others construction products**

Description: M-Pwr™ Smart Doors employ patent-pending, Underwriters Laboratories (UL) certified technology that connects residential exterior doors to a home's electrical system and wireless internet network. They are the first residential exterior doors to integrate power, lights, a video doorbell and a smart lock into the door system.

It is a fully-powered system providing reliable "always on" smart technology and lighting. Additionally, in the event of a power outage, an emergency backup battery can sustain system power up to 24 hours when fully charged.

Photo Credit: Masonite



## Skylight Vent

**First Metal Products Industrial Co., Ltd., Taiwan**

Lead Designer(s): Yung Neng Chan

**Winner in Others construction products**

Description: Skylight vent is well accepted by the market for its energy cost reduction and easy-to-install assemblies. It has obtained many patents in various countries, including an invention patent in the U.S. It also reduces carbon emissions. Here are some significant highlights of this product. First, it embraces the natural sunlight. The users could enjoy the sunshine indoors without using electric lamps that produce unnecessary energy consumption. The second highlight of the product is its good ventilation.



## Cross Weather Windows Super 8

**Litiger Co., Ltd., Taiwan**

Lead Designer(s): LAI CHIN MING

**Winner in Others construction products**

Description: Cross Weather is dedicated to creating better windows which are made to protect every household, crossing the boundaries of problematic factors caused by weather. With 10 innovative patents and care, Cross Weather protects its customers' homes from wind, rain, sun, and noise. Through research and development, the company is also devoted to helping customers pursue a sustainable life. Its products are created with technologies that take sustainability, nature and energy efficiency into consideration.



## The Flett Flashing

**Scott Flett Architecture Workshop, Australia**

Lead Designer(s): Scott Flett

**Winner in Roofing materials and structures**

Description: The Flett Flashing is the world's first 3D printed roof flashing. 3D printing allows the flashing to perfectly match any specified roofing profile and colour and permits junctions between roofing sheets of different pitches to be installed without difficulty. This invention makes architectural cladding quicker, easier and cheaper to install. Architectural Cladding continues to be an enduring method of cladding throughout the world. One of the design challenges of using architectural cladding is how to resolve junctions.

Photo Credit: Mark Lobo, Matt Sansom, Chris Shurman, Scott Flett

## Engineered Structural Roof Frames (Rooftop Unit Supports) for Commercial & Industrial Buildings

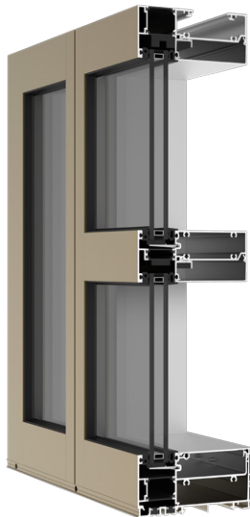
**QuickFrames USA, United States**

Lead Designer(s): QuickFrames USA

**Winner in Roofing materials and structures**

Description: These engineered, structural roof frames were designed to modernize the practice of welding in angle iron frames on construction projects. Traditionally, project stakeholders would have to wait for mechanical locations before ordering angle iron frames, hire skilled welders to install them (which is costly, time-consuming and dangerous) and then cut out the frames or abandon them entirely if the locations changed.

These bolt-on, adjustable roof frames for rooftop units (skylights, roof drains, HVAC units, etc.



## YWW 60 XT Window Wall

**YKK AP America, Inc., United States**

Lead Designer(s): Derrick Stronks; Anthony Amos

**Winner in Wall & Isolation systems and materials**

Description: The YWW 60 XT is designed to meet the most stringent thermal performance requirements. A clean design, fast installation and maximum design versatility make it ideal for mid-to-high rise building applications, particularly in the Northeast region and other cold-weather climates.

The YWW 60 XT features a U-factor of 0.36 BTU/HR/SF with a COG of 0.29 with standard one-inch glass. Thermal performance is unmatched thanks to 40 mm polyamide isostruts, along with YKK AP's patented ThermaBond Plus® technology, a pour and debridge system which enhances energy savings, and a patented process to prevent dry shrinkage.

Photo Credit: YKK AP America, Inc.

## Window Wall System

**KOVA, United States**

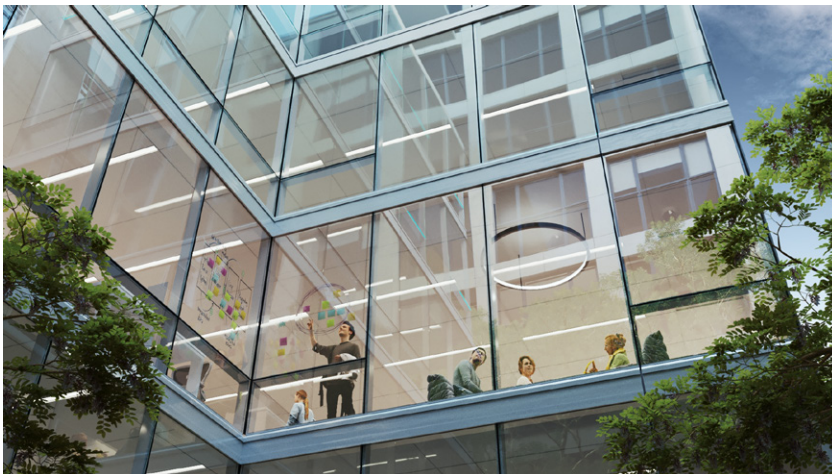
Lead Designer(s): Mark Mathey

**Winner in Wall & Isolation systems and materials**

Description: Introducing a first-of-its-kind installation process that is easier and lower risk than others on the market, the newly-launched, patent-pending Window Wall System can be fully installed from the interior of the building.

Constructed with a non-strutted thermal break, the Window Wall System optimizes a building's energy performance and efficiency through the thermal separation functionality. Thoughtfully designed with the sustainable principle of disassembly in mind, the Window Wall is 100% recyclable due to its intuitive, non-strutted system, making it easy to take apart the product at the end of its life cycle so that each piece can be easily and completely recycled or reused elsewhere.

Photo Credit: Courtesy of KOVA





# partners

APDC 亞太設計中心  
Asia Pacific Design Center



DESIGN BOX  
Awards.com

设计纪元™  
DESIGN EPOCH

.STUDIO



DesignRe-explore  
设计再探索

EDL Eesti Disainerite Liit  
Estonian Association of Designers

ZZ MediA

WDO WORLD DESIGN ORGANIZATION



AMAZING ARCHITECTURE

ART NAGRADA

design wanted



idesigners.eu

stir  
www.stirworld.com

# university





The SIT Furniture Design Award was created to recognize the efforts of talented international furniture designers, interior designers, and interior decorators who use furniture in the design of their spaces. The SIT Award celebrates creativity and shares with the world the innovative visions of furniture and interior designers.

[www.sitaward.com](http://www.sitaward.com)



The LIT Design Awards were created to recognize the efforts of talented international lighting product designers and lighting implementers. We believe that lighting is both an art and a science, and is one of the most important elements of design. The LIT Awards were envisioned to celebrate creativity and innovation in the field of lighting products and applications.

[www.litawards.com](http://www.litawards.com)



The BLT Built Design Awards honor the expertise of all professionals involved in the realization of outstanding projects, including architecture firms, interior design experts, construction products, and project management.

[www.bltawards.com](http://www.bltawards.com)



The mission of the LIV Hospitality Design Awards is to celebrate the quality of architectural ventures and the diversity of interior design that shape hospitality around the world. The LIV Awards is an inclusive platform, pursuing exceptional projects within the living and dining spaces, from co-living to beach resorts, from fine dining restaurants to pop-up bars.

[www.livawards.com](http://www.livawards.com)

## OUR COMPANY



3C Awards® is a leading organization curating and promoting design across the globe.

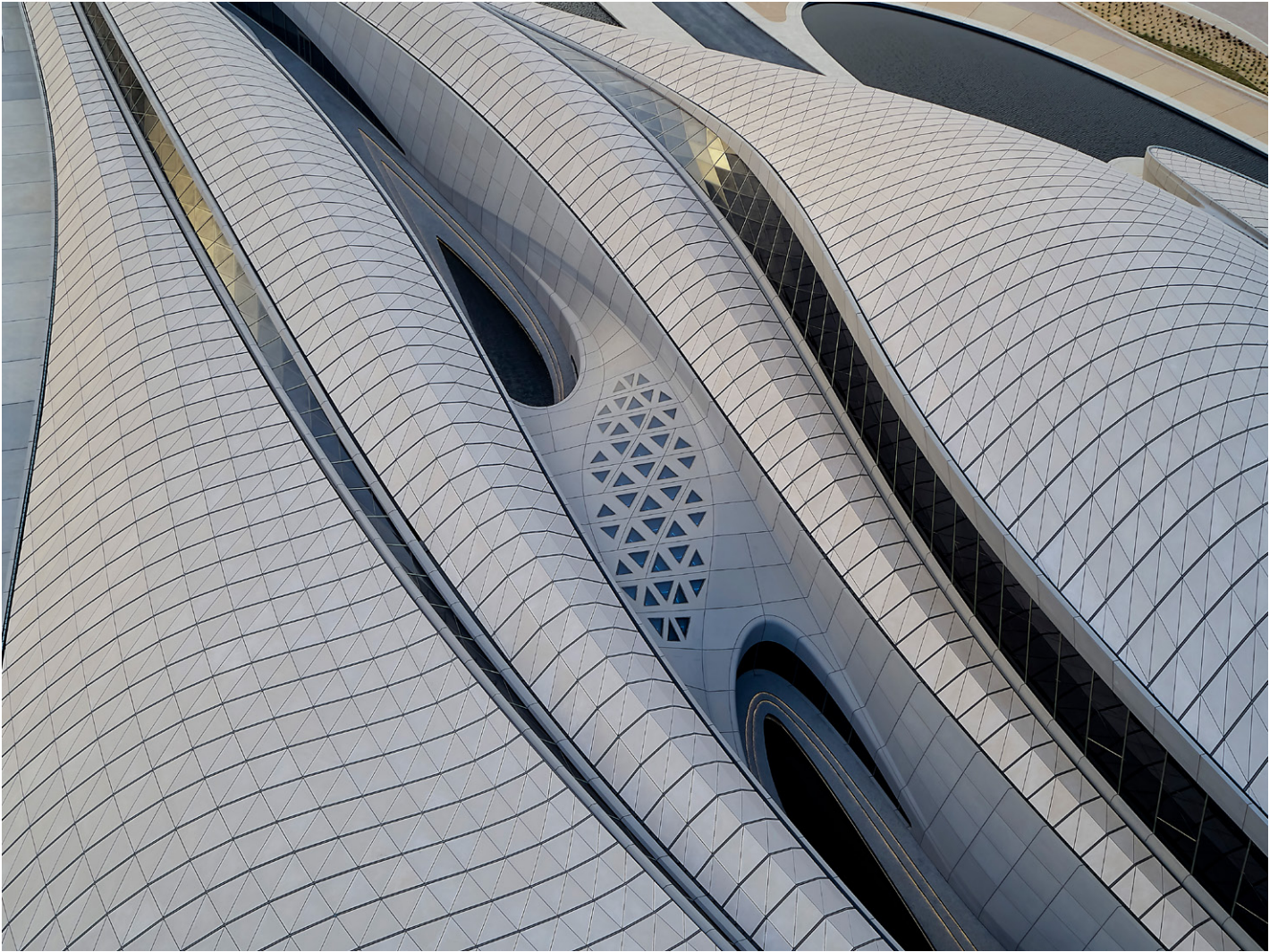
The company's key mission is to promote design through awarding great designs, exhibiting, developing designers and artist communities, providing networking opportunities, and advancing the appreciation of excellence in design through education, outreach, and grants. 3C Awards® represent today's diversity and innovation in Lighting Design, Furniture Design, Interior Design, and Architecture. Each brand is a symbol of design excellence around the world, showcasing Professional and Emerging designer's work to over 100 expert jury members. Receiving submissions from over 65 countries every year, 3C Awards® provide unique opportunities to Designers across the world to reach new markets and increase exposure and media coverage.



3C Group® recognizes and supports talented designers through awards, press, media exposure, events, and exhibitions organization.

Developed by Hossein Farmani and Astrid Hébert, 3C Awards® is part of a larger organization 3C GROUP® based in Switzerland and specialized in Awards, Marketing, Media, and Events.

3C Group® is a sister company to Farmani Group, founded by Hossein Farmani. Farmani Group is a leading organization curating and promoting photography, design, and architecture across the globe since 1985.



Above: *BEEAH Headquarters* by Zaha Hadid Architects (Photograph by Hufton+Crow)

Front Cover: *ASARI African Sustainable Agriculture Research Institute* by Agence d'Architecture  
A. Bechu & Associés (Photograph by Fabio Mantovani)



[www.bltawards.com](http://www.bltawards.com)